

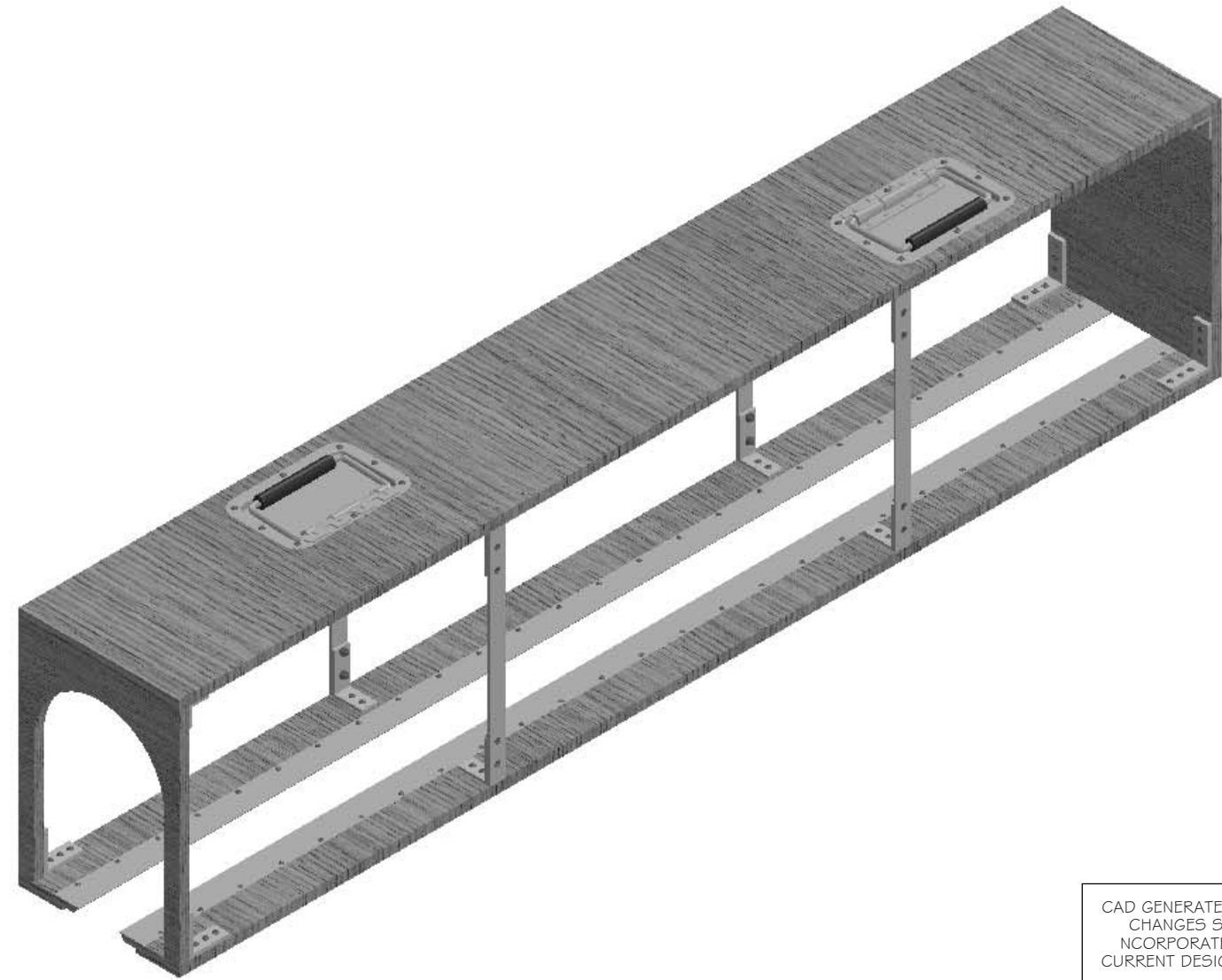
TITLE
**LOCOMOTIVE CARRY CASE
 FOR LARGE
 LOCOMOTIVES**

SIZE D	CAGE CODE -	DWG NO. LCAO 1-52	REV -
SCALE NONE	UNIT WT.	SHEET 2	OF 2

NOTES:

- 1. ASSEMBLE USING A GOOD QUALITY WOOD GLUE. SMALL BRADS OR FINISH NAILS COULD BE USED TO AID IN MAINTAINING ALIGNMENT WHILE GLUE SETS.
- 2. AFTER ASSEMBLING FIND NOs 1, 2 AND 3, AND BEFORE ASSEMBLING REMAINING COMPONENTS, FINISH WITH PAINT OR STAIN AND TOP COAT (VARNISH OR POLYURETHANE) OF YOUR CHOICE.
- 3. ASSEMBLE FASTENERS USING A THREAD LOCKING COMPOUND.
- 4. PART NUMBER LISTED IS FOR MCMASTER-CARR SUPPLY COMPANY, 6100 FULTON INDUSTRIAL BLVD, ATLANTA, GA, 30336 (404) 346-7000.

FIND NO.	QTY.	CAGE CODE	ITEM IDENTIFICATION OR PART NO	NOMENCLATURE	MATERIAL	SPECIFICATION	NOTE	ZONE
1	1		LCA06-52-01	TOP	FURNATURE GRADE PLY 1/2 THK	MATERIAL OF CHOICE		
2	1		LCA06-40-02	END PANEL	FURNATURE GRADE PLY 1/2 THK	MATERIAL OF CHOICE		
3	1		LCA06-40-03	PORTAL	FURNATURE GRADE PLY 1/2 THK	MATERIAL OF CHOICE		
4	2		LCA03-52-01	RAIL ASSEMBLY 52 LONG				
5	2		LCA07-40-04	TOP CORNER ANGLE	ANGLE AL ALY 6061-T6	1 X 1 X 1/8 X 8 LG		
6	4		LCA07-40-02	PORTAL ANGLE	ANGLE AL ALY 6061-T6	2 X 2 X 3/16 X 3/4 LG		
7	8		LCA07-40-03	SIDE ANGLE	ANGLE AL ALY 6061-T6	2 X 1 1/2 X 3/16 X 3/4 LG		
8	4		LCA07-40-05	HANGER	BAR AL ALY 6061-T6	1/8 X 3/4 X 11 LG		
9	2	OKVE6	13195A510	RECESSED FOLDING PULL HANDLE	ZINC-PLATED STEEL SPRING-LOADED			4.
10	60	OKVE6	98685A440	SCREW, WOOD, ROUND HEAD, PHILLIPS	BRASS NO 6 X 5/8 LG			4.
11	16	25125	385880	SCREW, WOOD, ROUND HEAD, PHILLIPS	BRASS NO 6 X 3/8 LG			4.
12	16	OKVE6	92916A325	WASHER FLAT ROUND	BRASS NO 6	.14 ID X .3125 OD X .01 THK		4.
13	16	OKVE6	93496A407	WASHER LOCK SPLIT SPRING	SILICON BRONZE NO 6			4.
14	16	OKVE6	95130A120	NUT HEX MACHINE SCREW	BRASS NO 6-32			4.
15	16	OKVE6	92480A148	SCREW MACHINE FLAT HEAD 82 DEG PHILLIPS	BRASS NO 6 X 1/2 LG			4.



LCA02-52-01 - MAIN CARRIER ASSEMBLY

10	9	8	7	6	5	4	3	2	1	REVISION	REV STATUS OF SHEETS
										-	-
										-	-
										-	-
										-	-
										-	-
										-	-
										-	-
										-	-
										-	-
										-	-

CAD GENERATED DRAWING. CHANGES SHALL BE INCORPORATED BY THE CURRENT DESIGN ACTIVITY.

THIS DOCUMENT IS THE PROPERTY OF CITICO CREEK MODEL PRODUCTS AND MUST BE RETURNED ON DEMAND. THE INFORMATION HEREON MAY NOT BE USED OR DIVULGED WITHOUT THE EXPRESSED WRITTEN PERMISSION OF CITICO CREEK MODEL PRODUCTS.

INTERPRET DRAWING PER ASME Y14.100

UNLESS OTHERWISE SPECIFIED DIMENSIONS ARE IN INCHES

TOLERANCES

ANGLES ± 0°30'

FRACTIONS ± 1/32

DECIMALS ± .X .05, .XX .02, .XXX .010

BROKEN EDGES 0.15 MAX.

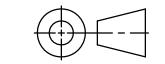
FILLETS .015 R MAX.

PART SHALL BE FREE OF BURRS

SURFACE ROUGHNESS 125 ✓

DO NOT SCALE THIS DRAWING

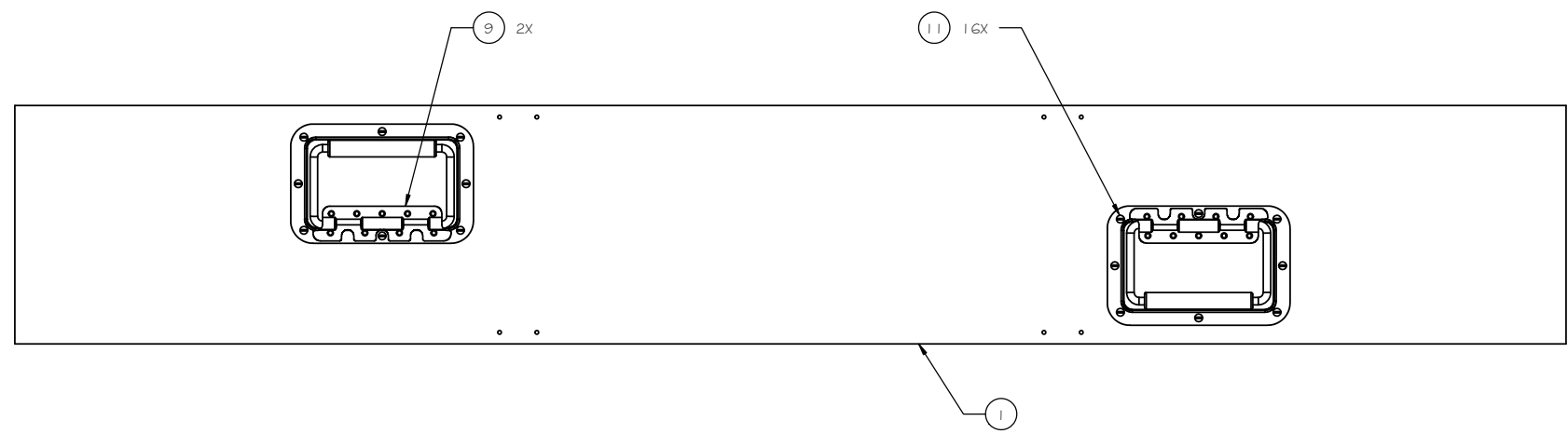
THIRD ANGLE PROJECTION



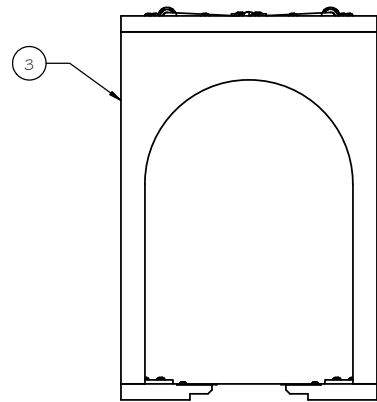
-		ORIGINAL ISSUE.			
ZONE	LTR	DESCRIPTION	DATE	APPROVED	
REVISIONS					
Citico Creek Model Products PO Box 223 Lynn Haven, FL 32444			Citico Creek Model Products		
PROJECT	LOCO CARRIER	TITLE	52" MAIN CARRIER ASSEMBLY		
Drawn	B.C.	2013-12-04			
Engr/Dagn					
Checked					
Approved					
SIZE	CAGE CODE	DWG NO.	REV		
D	-	LCA02-52	-		
SCALE	NONE	UNIT WT.	SHEET	1	OF 3

8 7 6 5 4 3 2 1

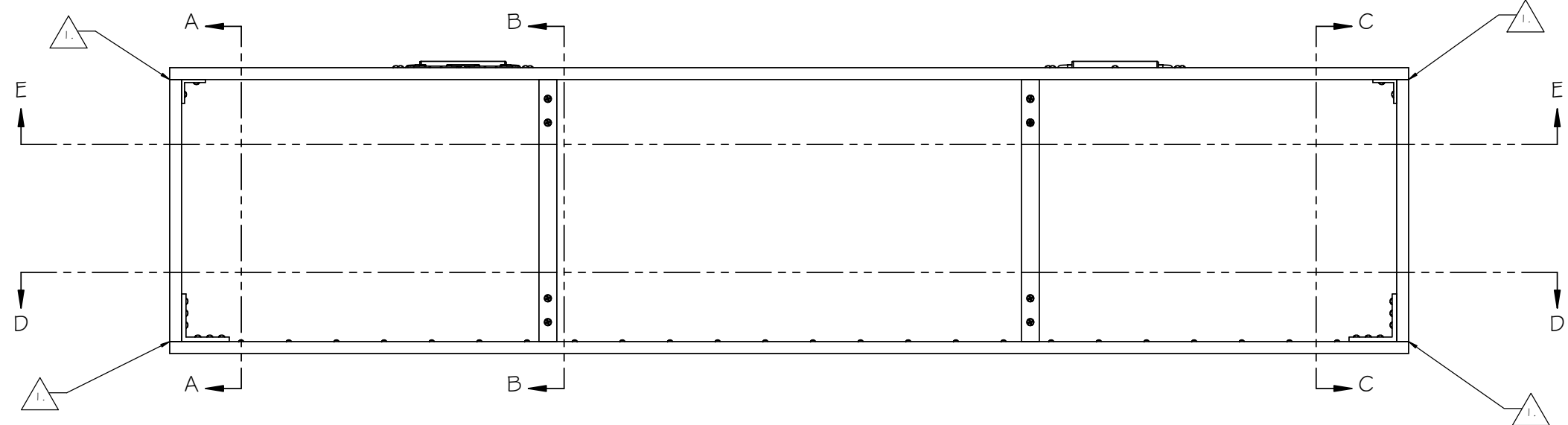
D
C
B
A



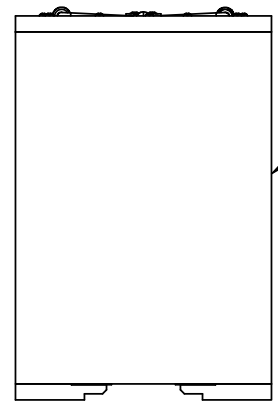
TOP VIEW



PORTAL END



SIDE VIEW



CLOSED END

TITLE			
52" MAIN CARRIER ASSEMBLY			
SIZE	CAGE CODE	DWG NO.	REV
D	-	LCA02-52	-
SCALE	NONE	UNIT WT.	SHEET 2 OF 3

8 7 6 5 4 3 2 1

8

7

6

5

4

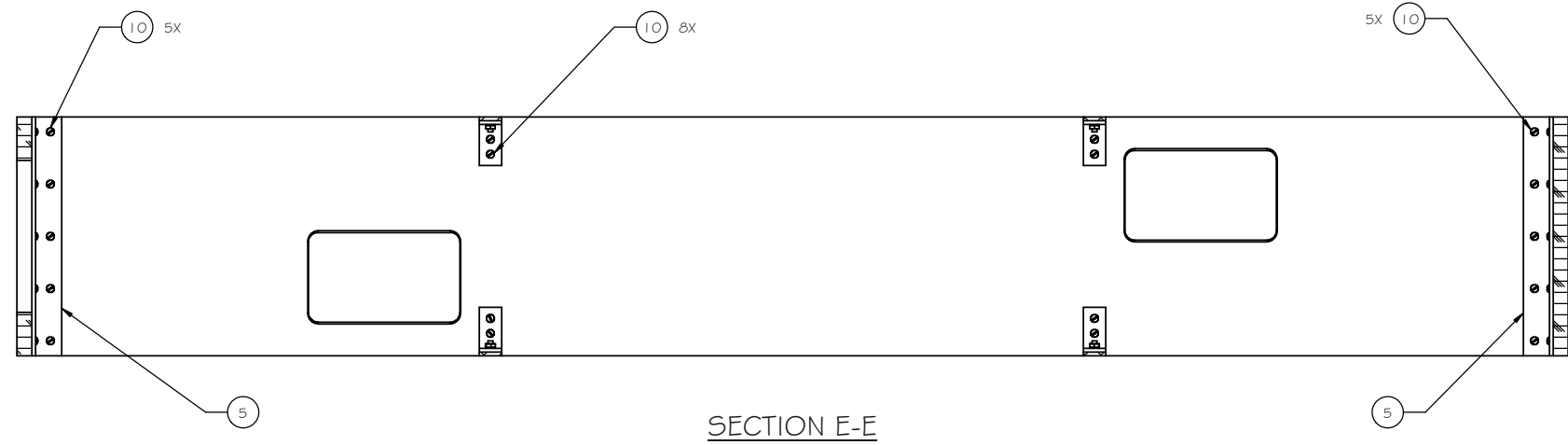
3

2

1

D

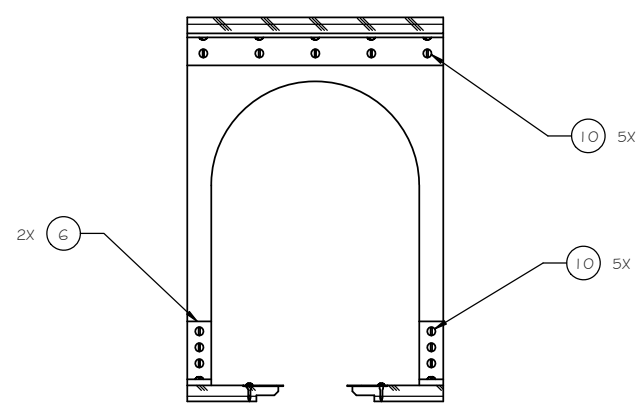
D



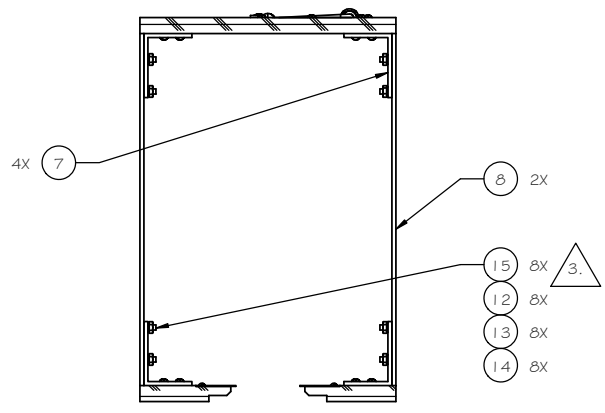
SECTION E-E

C

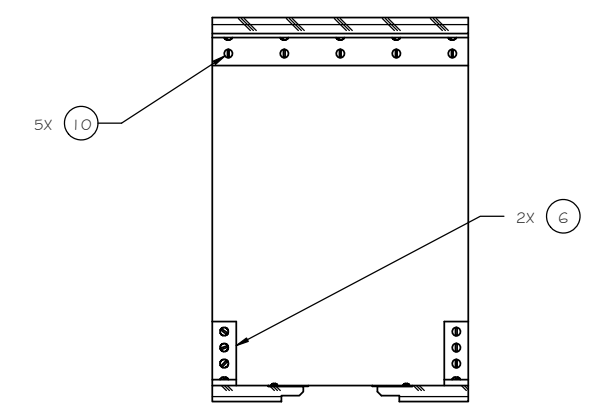
C



SECTION A-A



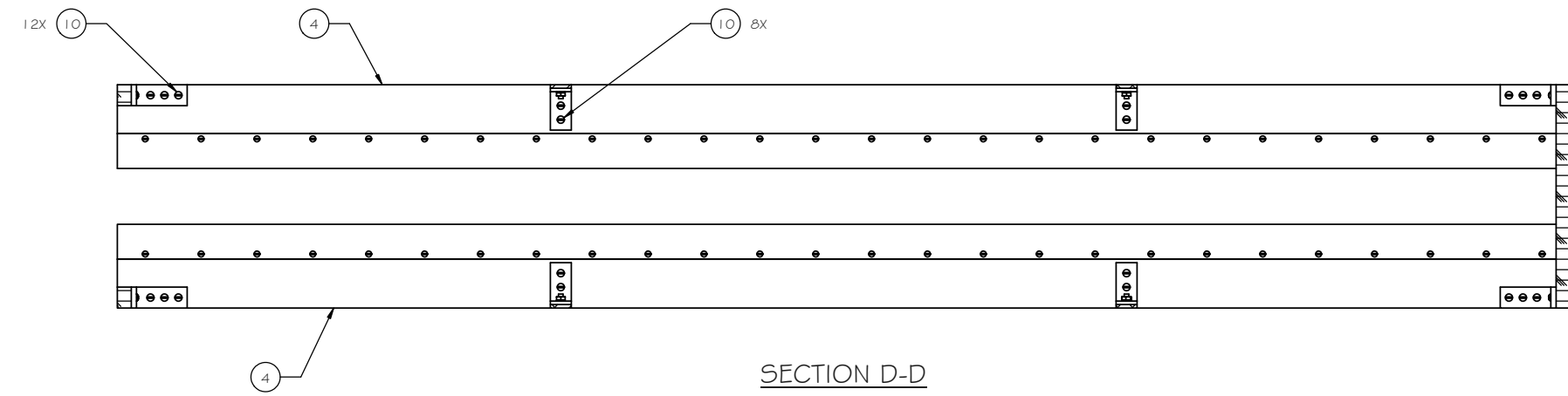
SECTION B-B
2 PLACES



SECTION C-C

B

B



SECTION D-D

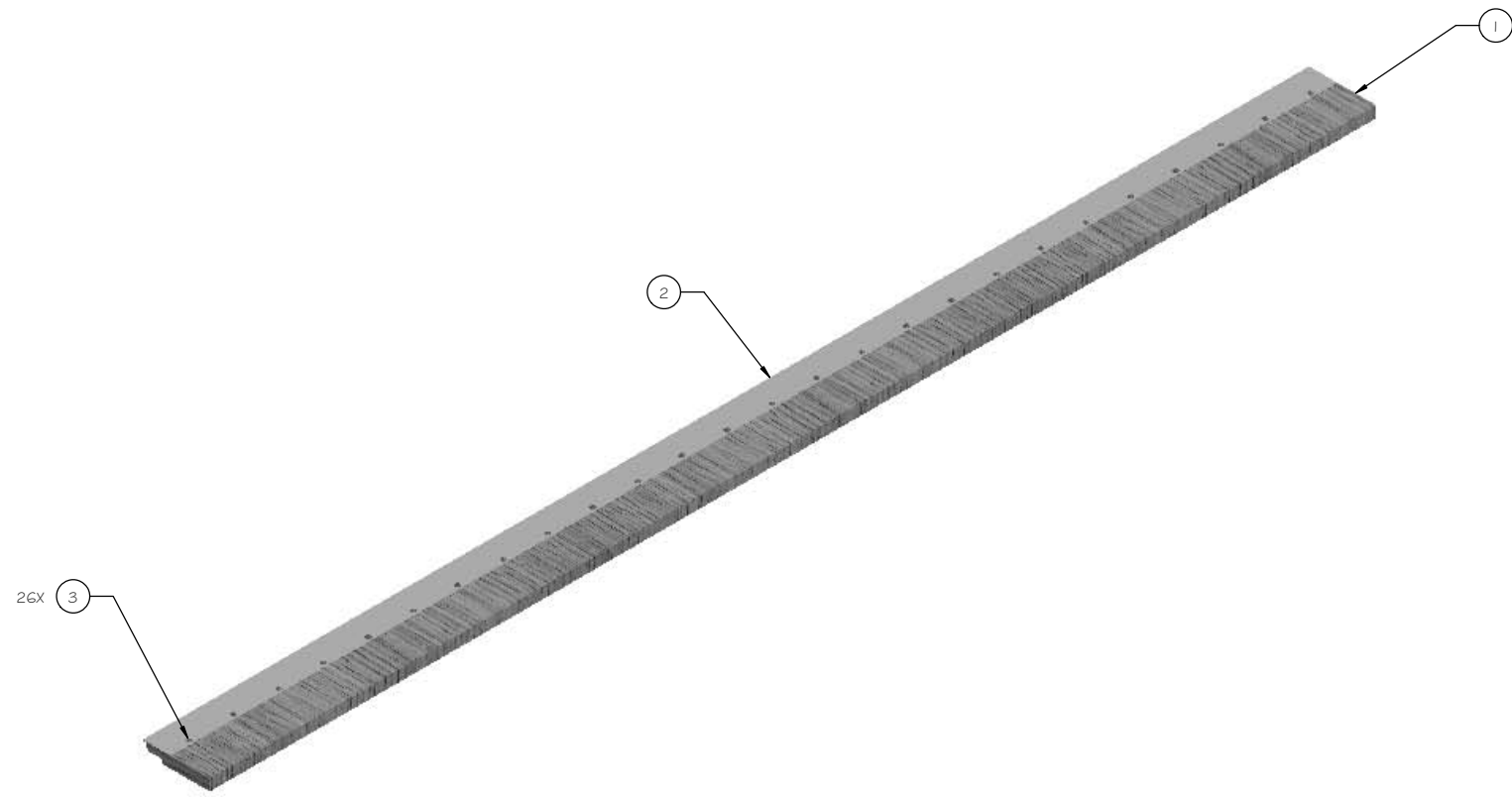
A

A

TITLE			
52" MAIN CARRIER ASSEMBLY			
SIZE	CAGE CODE	DWG NO.	REV
D	-	LCA02-52	-
SCALE	NONE	UNIT WT.	SHEET 3 OF 3

FIND NO.	QTY.	CAGE CODE	ITEM IDENTIFICATION OR PART NO	NOMENCLATURE	MATERIAL	SPECIFICATION	NOTE	ZONE
1	1		LCA06-52-04	RAIL PLANK	FURNATURE GRADE PLY 1/2	MATERIAL OF CHOICE		
2	1		LCA07-52-01	STRAPPING, STEEL, .025 X 1.25 NOM.	MAKE FROM 5-2997-5			
3	26	OKVE6	98685A330	SCREW WOOD ROUND HEAD PHILLIPS	BRASS No 4 X 1/2 LG			

NOTES:



LCA03-52-01 - RAIL PLANK ASSEMBLY

ZONE	LTR	DESCRIPTION	DATE	APPROVED
-		ORIGINAL ISSUE.		

CAD GENERATED DRAWING. CHANGES SHALL BE INCORPORATED BY THE CURRENT DESIGN ACTIVITY.

THIS DOCUMENT IS THE PROPERTY OF CITICO CREEK MODEL PRODUCTS AND MUST BE RETURNED ON DEMAND. THE INFORMATION HEREON MAY NOT BE USED OR DIVULGED WITHOUT THE EXPRESSED WRITTEN PERMISSION OF CITICO CREEK MODEL PRODUCTS.

INTERPRET DRAWING PER ASME Y14.100

UNLESS OTHERWISE SPECIFIED DIMENSIONS ARE IN INCHES

TOLERANCES
 ANGLES ± 0°30'
 FRACTIONS ± 1/32
 DECIMALS ± X.05, .XX (.02), .XXX (.010)
 BROKEN EDGES 0.15 MAX.
 FILLETS .015 R MAX.
 PART SHALL BE FREE OF BURRS
 SURFACE ROUGHNESS 1.25 ✓

DO NOT SCALE THIS DRAWING

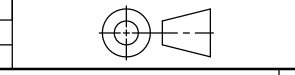
Citico Creek Model Products PO Box 223 Lynn Haven, FL 32444	
PROJECT	LOCO CARRIER
Drawn	B.C. 2013-12-06
Engr/Dagn	
Checked	
Approved	

Citico Creek Model Products

TITLE: RAIL PLANK ASSEMBLY

REV	REVISION	REV STATUS OF SHEETS
10		
9		
8		
7		
6		
5		
4		
3		
2		
1		
-	REVISION SHEET	

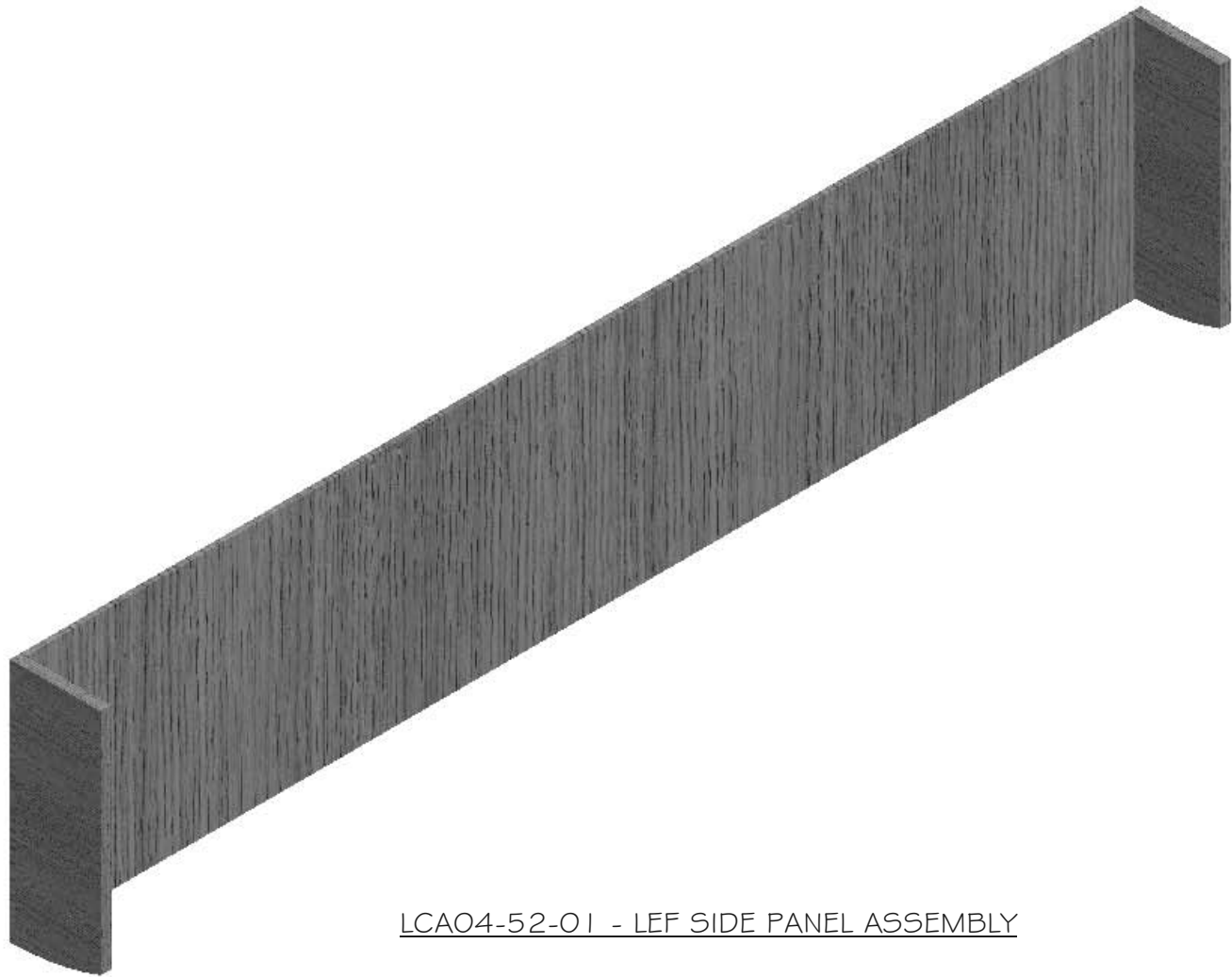
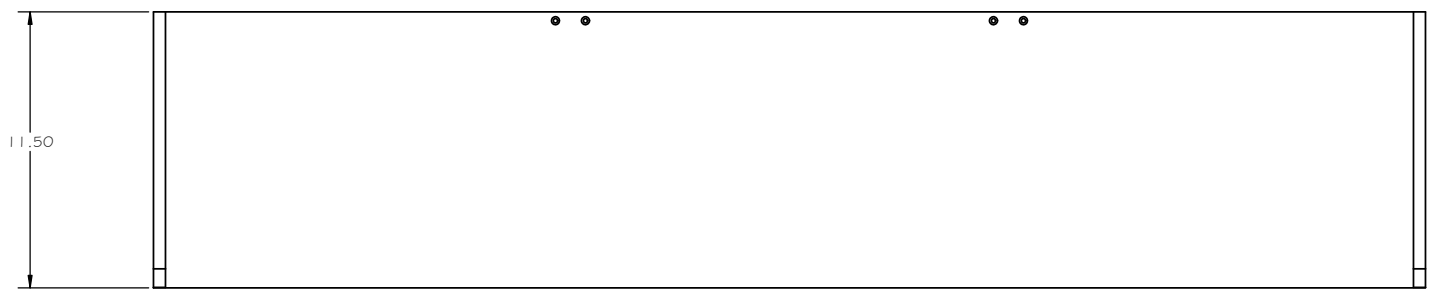
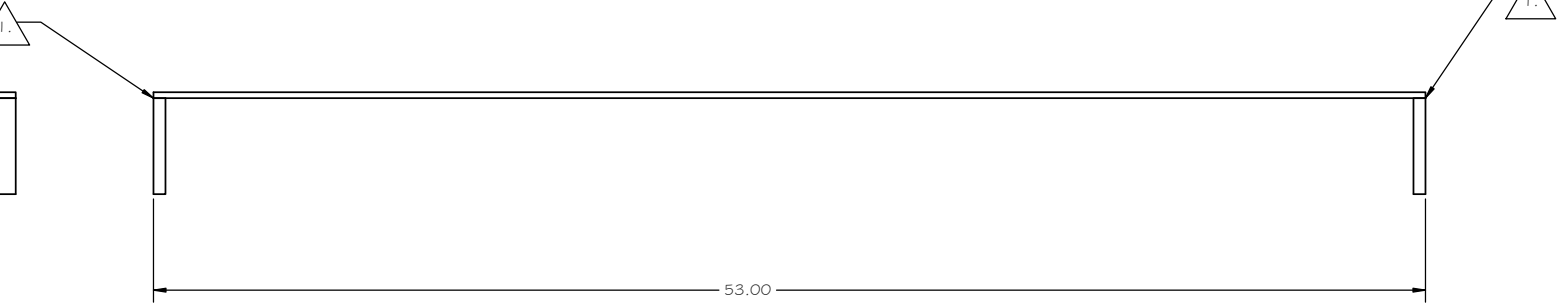
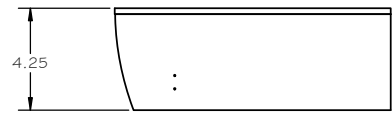
NEXT ASSY	USED ON
APPLICATION	



SIZE	CAGE CODE	DWG NO.	REV
D	-	LCA03-52	-
SCALE	NONE	UNIT WT.	SHEET OF

FIND NO.	QTY.	CAGE CODE	ITEM IDENTIFICATION OR PART NO.	NOMENCLATURE	MATERIAL	SPECIFICATION	NOTE	ZONE
1	1		LCA0G-52-0G	SIDE PANEL	FURNATURE GRADY PLY 1/4	MATERIAL OF CHOICE		
2	2		LCA0G-40-04	END CLOSURE - LEFT	FURNATURE GRADE PLY 1/2	MATERIAL OF CHOICE		

NOTES:
 1. ASSEMBLE USING A GOOD QUALITY WOOD GLUE. SMALL BRADS OR FINISH NAILS COULD BE USED TO AID IN MAINTAINING ALIGNMENT WHILE GLUE SETS.



LCA04-52-01 - LEF SIDE PANEL ASSEMBLY

ZONE	LTR	DESCRIPTION	DATE	APPROVED
-		ORIGINAL ISSUE.		

CAD GENERATED DRAWING. CHANGES SHALL BE INCORPORATED BY THE CURRENT DESIGN ACTIVITY.

THIS DOCUMENT IS THE PROPERTY OF CITICO CREEK MODEL PRODUCTS AND MUST BE RETURNED ON DEMAND. THE INFORMATION HEREON MAY NOT BE USED OR DIVULGED WITHOUT THE EXPRESSED WRITTEN PERMISSION OF CITICO CREEK MODEL PRODUCTS.

INTERPRET DRAWING PER ASME Y14.100

UNLESS OTHERWISE SPECIFIED DIMENSIONS ARE IN INCHES
 TOLERANCES
 ANGLES ± 0°30'
 FRACTIONS ± 1/32
 DECIMALS ± X.05, .XX, .02, .XXX, .010
 BROKEN EDGES 0.15 MAX.
 FILLETS .015 R MAX.
 PART SHALL BE FREE OF BURRS
 SURFACE ROUGHNESS 125 ✓

DO NOT SCALE THIS DRAWING

THIRD ANGLE PROJECTION

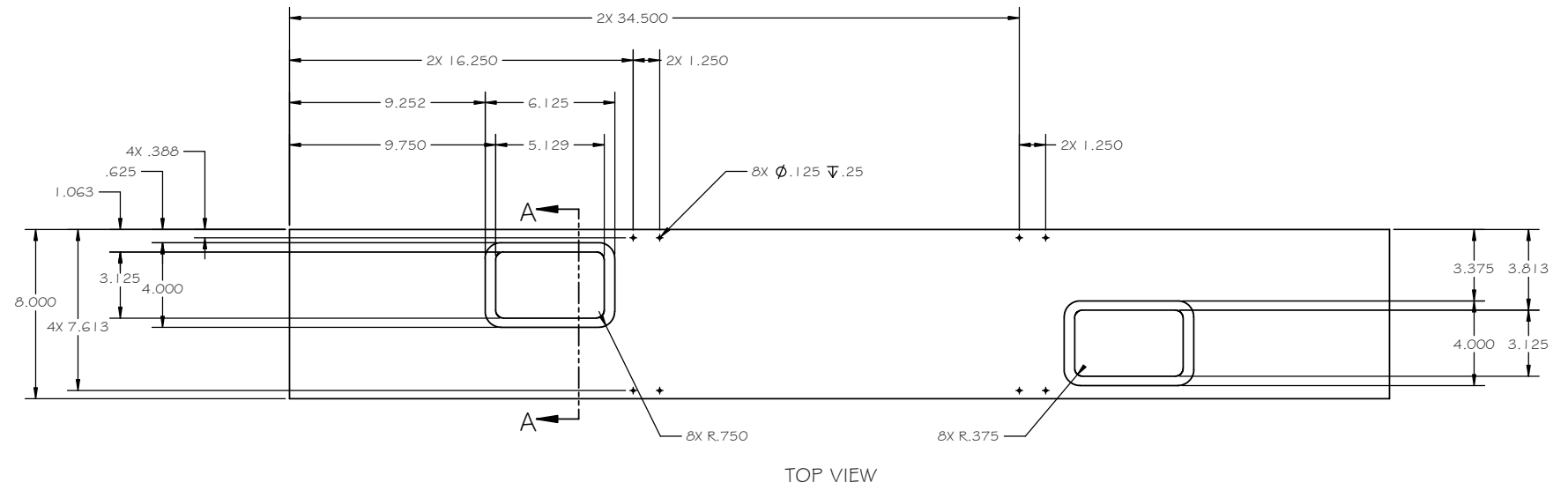
Citico Creek Model Products PO Box 223 Lynn Haven, FL 32444		Citico Creek Model Products	
PROJECT	LOCO CARRIER	TITLE	
Drawn	B.C.	2013-12-06	
Engr/Dagn			
Checked			
Approved			
SIZE	CAGE CODE	DWG NO.	REV
D	-	LCA04-52	-
SCALE	NONE	UNIT WT.	SHEET OF

10	9	8	7	6	5	4	3	2	1	REVISION	REV STATUS OF SHEETS
										-	

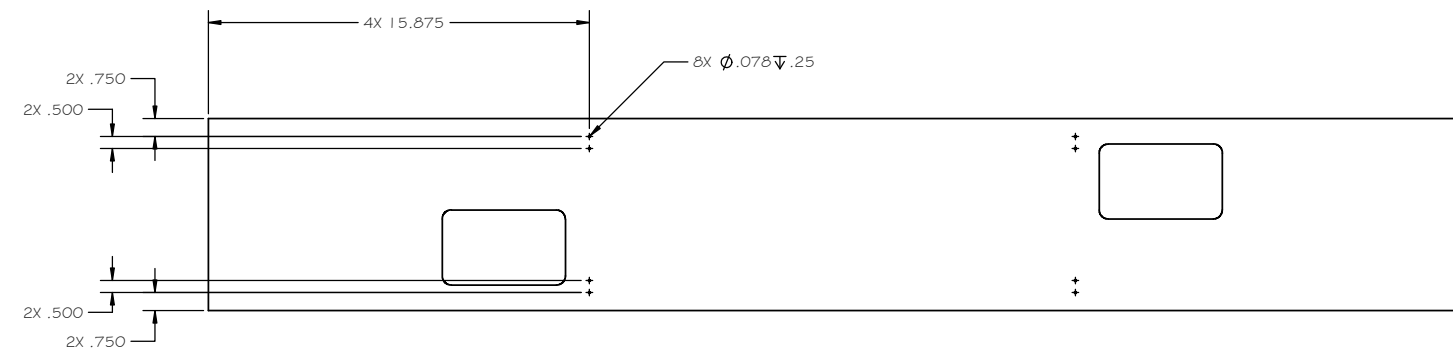
APPLICATION	USED ON
NEXT ASSY	

NOTES:

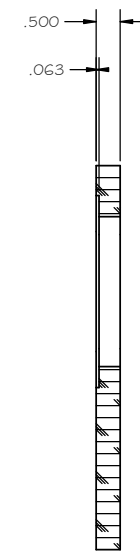
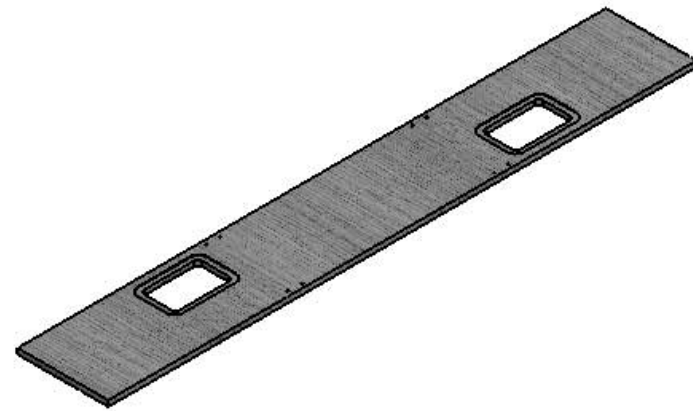
1. FURNITURE GRADE PLYWOOD, MATERIAL OF BUILDER'S CHOICE.



TOP VIEW



LCA06-52-01 - TOP

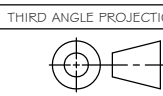


SECTION A-A

CAD GENERATED DRAWING. CHANGES SHALL BE INCORPORATED BY THE CURRENT DESIGN ACTIVITY.

THIS DOCUMENT IS THE PROPERTY OF CITICO CREEK MODEL PRODUCTS AND MUST BE RETURNED ON DEMAND. THE INFORMATION HEREON MAY NOT BE USED OR DIVULGED WITHOUT THE EXPRESSED WRITTEN PERMISSION OF CITICO CREEK MODEL PRODUCTS.

INTERPRET DRAWING PER ASME Y14.100
UNLESS OTHERWISE SPECIFIED DIMENSIONS ARE IN INCHES
TOLERANCES
ANGLES ± 0°30'
FRACTIONS ± 1/32
DECIMALS ± X .05, .XX .02, .XXX .010
BROKEN EDGES 0.15 MAX.
FILETS .015 R MAX.
PART SHALL BE FREE OF BURRS
SURFACE ROUGHNESS 1.25 ✓



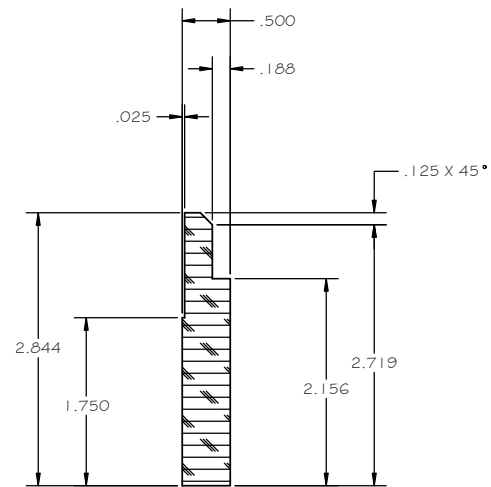
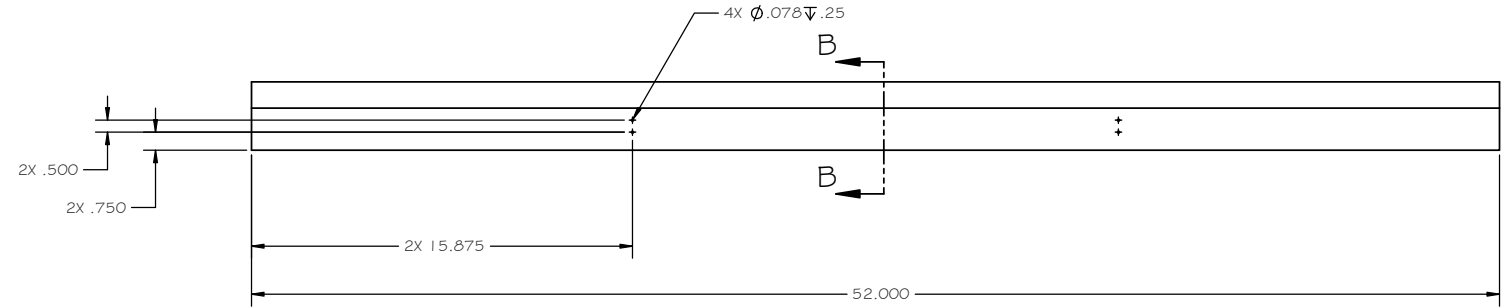
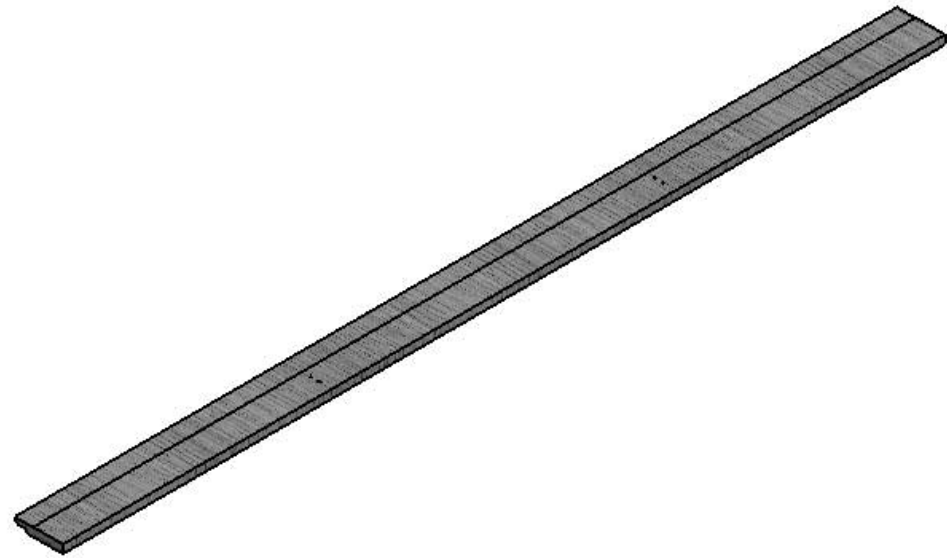
-	ORIGINAL ISSUE.		
ZONE	LTR	DESCRIPTION	DATE

REVISIONS			
PROJECT	LOCO CARRY CASE	TITLE	
Drawn	B.C.	2013-12-16	
Engr/Dagn			
Checked			
Approved			

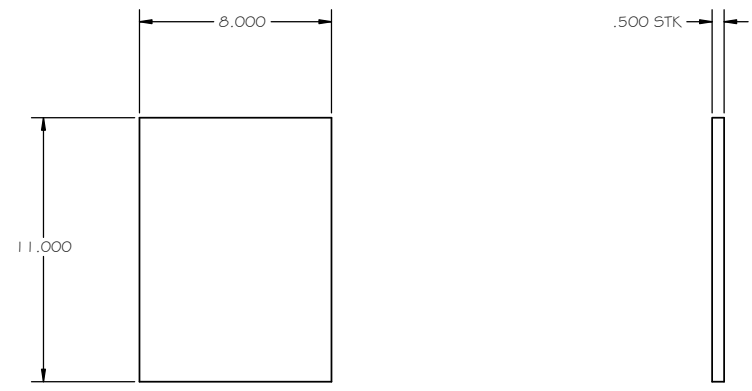
SIZE	CAGE CODE	DWG NO.	REV
D	-	LCA06-52	-
SCALE	NONE	UNIT WT.	SHEET 1 OF 3

10	9	8	7	6	5	4	3	2	1	SHEET
										REVISION
										REV STATUS OF SHEETS
										APPLICATION

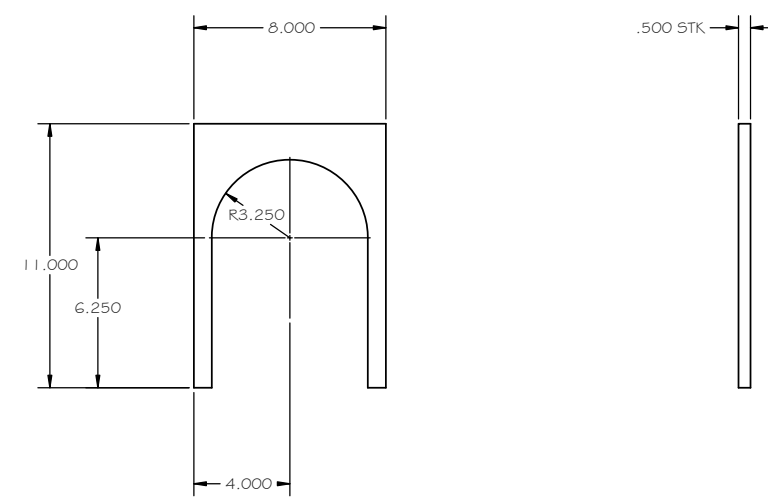
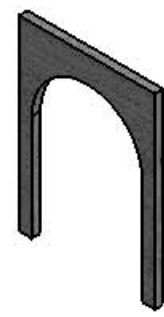
NEXT ASSY	USED ON
APPLICATION	



SECTION B-B
LCA06-52-04 - RAIL PLANK

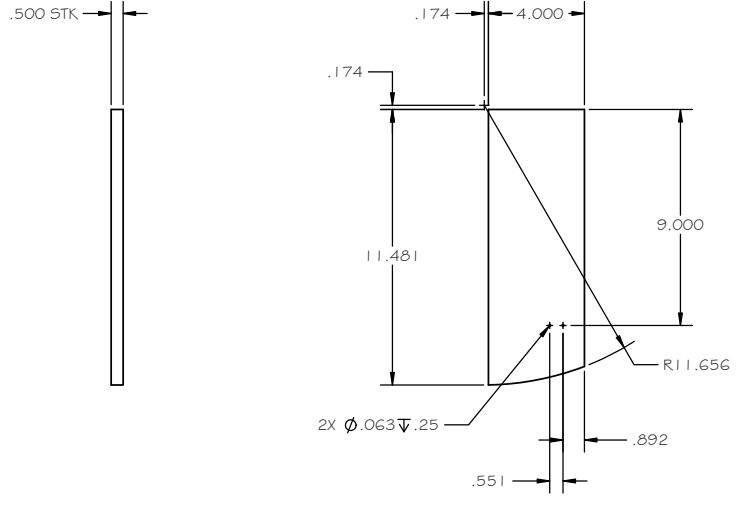


LCA06-40-02 - END PANEL

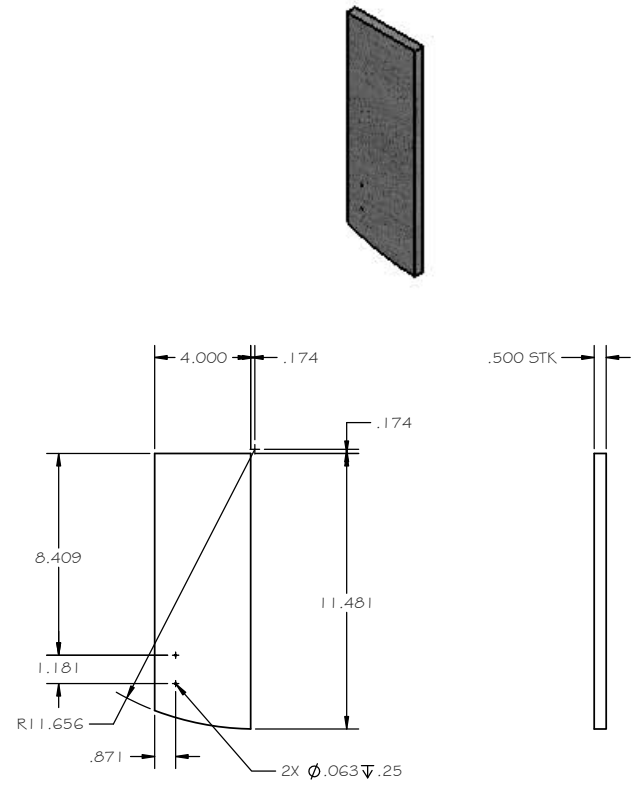


LCA06-40-03 - PORTAL

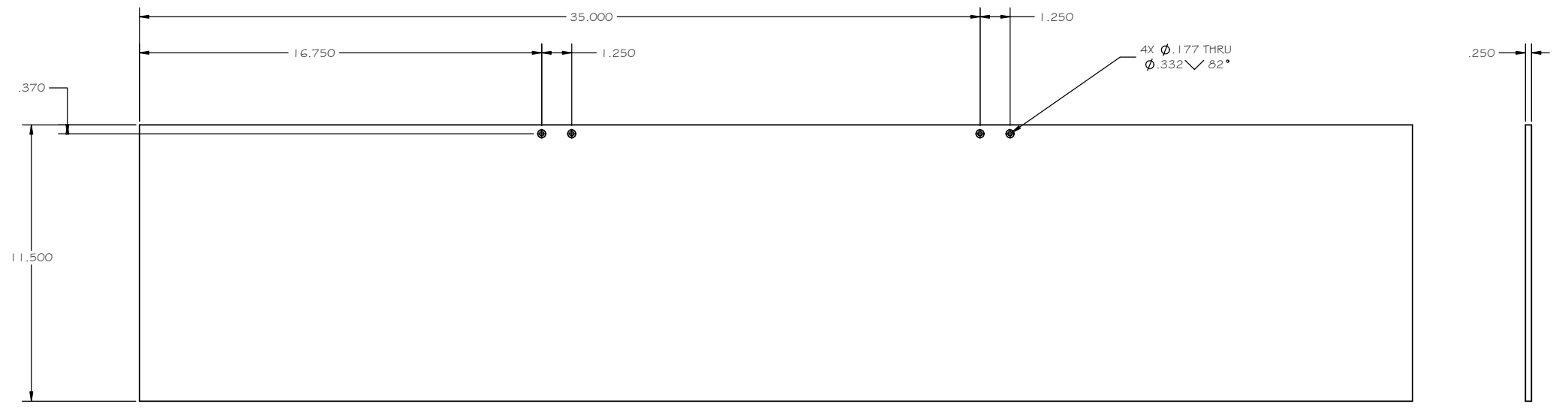
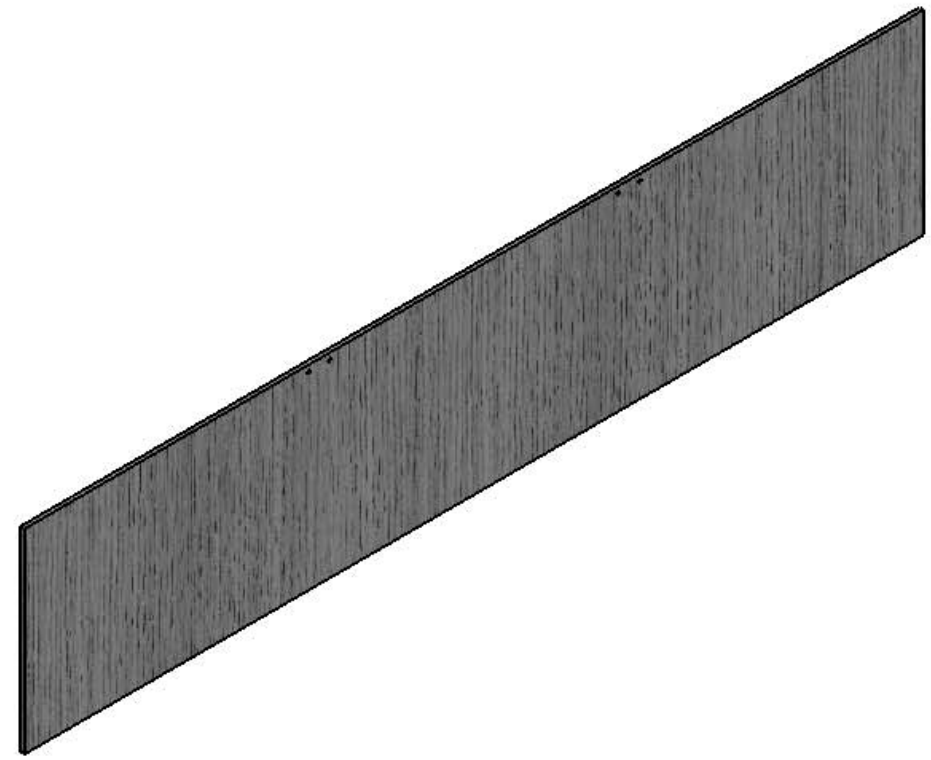
TITLE			
WOOD PART DETAILS			
SIZE	CAGE CODE	DWG NO.	REV
D	-	LCA06-52	-
SCALE	NONE	UNIT WT.	SHEET 2 OF 3



LCA06-40-04 - END CLOSURE - LEFT



LCA06-40-05 - END CLOSURE - RIGHT



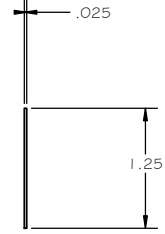
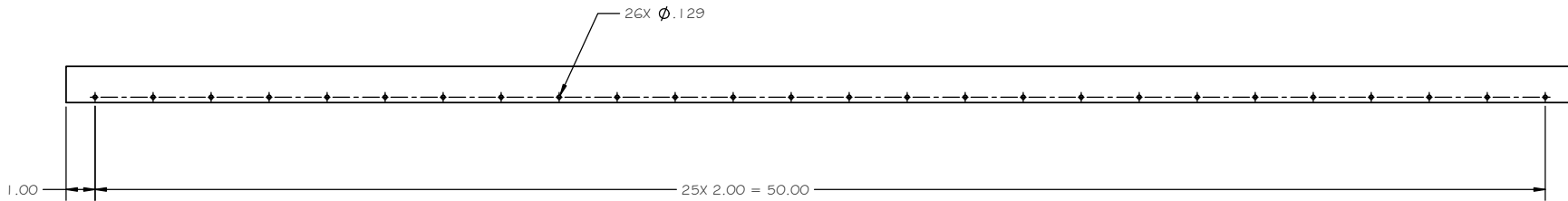
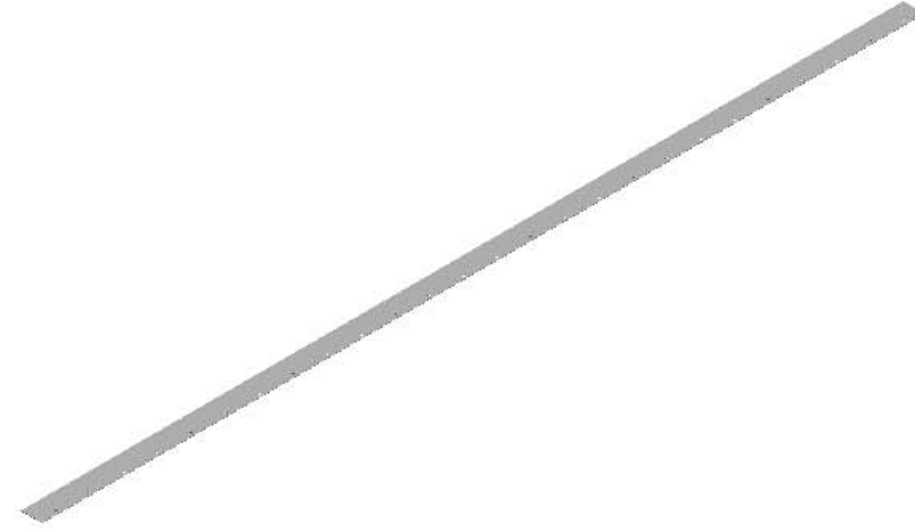
LCA06-52-06 - SIDE PANEL

TITLE			
WOOD PART DETAILS			
SIZE	CAGE CODE	DWG NO.	REV
D	-	LCA06-52	-
SCALE	NONE	UNIT WT.	SHEET 3 OF 3

FIND NO.	QTY.	CAGE CODE	ITEM IDENTIFICATION OR PART NO	NOMENCLATURE	MATERIAL	SPECIFICATION	NOTE	ZONE
1	1		LCA07-52-01	STRAPPING, STEEL, .025 X 1.25 NOM.	MAKE FROM 6-2997-5		1.	
			LCA-7-40-02	ANGLE 2.00 x 2.00 x .1875	MAKE FROM 88805K98	G0G1-T6	2.	
			LCA07-40-03	ANGLE 2.00 X 1.50 X .125	MAKE FROM 88805K93	G0G1-T6	2.	
			LCA07-40-04	ANGLE 1.00 X 1.00 X .125	MAKE FROM 88805K77	G0G1-T6	2.	
			LCA07-40-05	BAR 0.125 X 0.75	MAKE FROM 89755K26	G0G1-T6	2.	

NOTES:

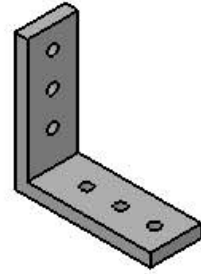
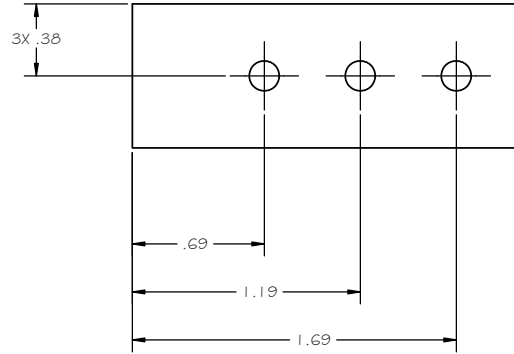
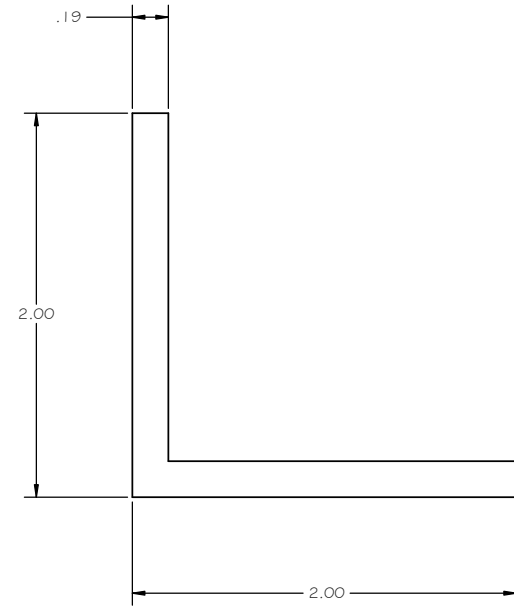
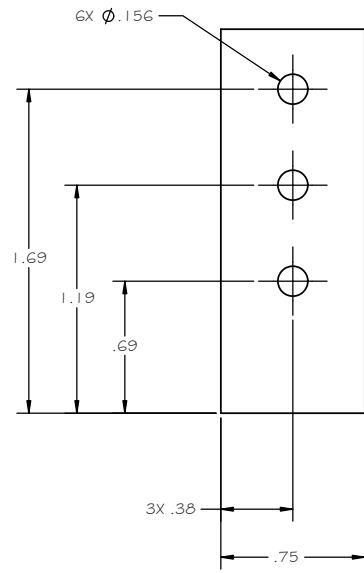
- 1. PART NUMBER LISTED IS FOR ULINE INC., 12575 ULINE DRIVE, PLEASANT PRARIE, WI 53158 (800) 295-5510 www.uline.com
PART NUMBER IS FOR A COMPLETE ROLL.
- 2. PART NUMBER LISTED IS FOR MCMMASTER-CARR SUPPLY COMPANY, 6100 FULTON INDUSTRIAL BLVD, ATLANTA, GA, 30336 (404) 346-7000.



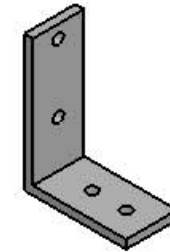
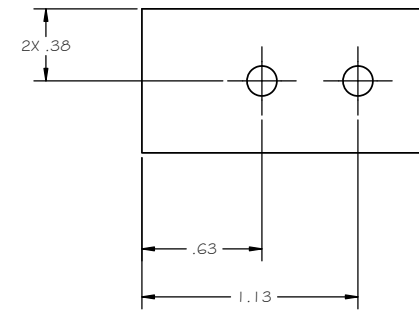
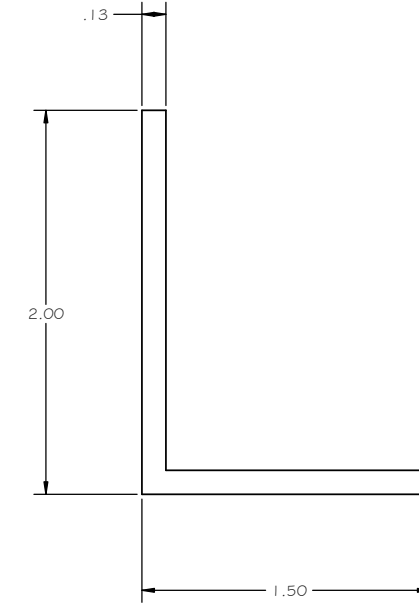
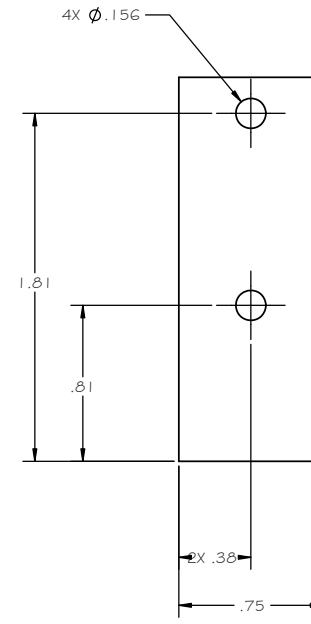
1 LCA07-40-01 - STRAPPING SOLID
MATL: STEEL

ZONE	LTR	DESCRIPTION	DATE	APPROVED
-		ORIGINAL ISSUE.		

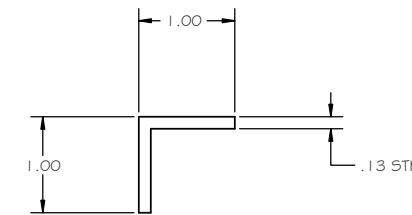
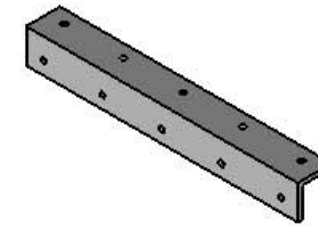
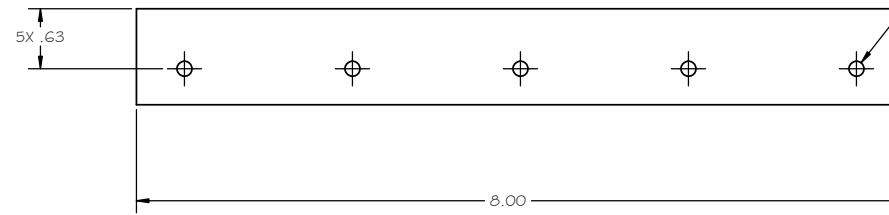
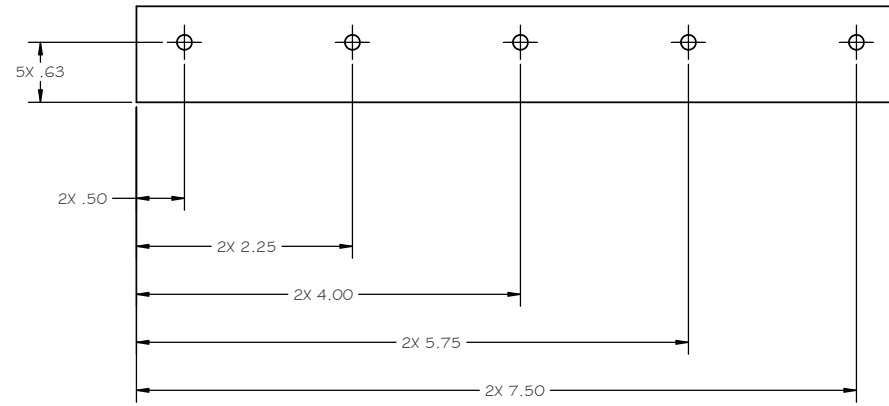
<p>CAD GENERATED DRAWING. CHANGES SHALL BE INCORPORATED BY THE CURRENT DESIGN ACTIVITY.</p> <p>THIS DOCUMENT IS THE PROPERTY OF CITICO CREEK MODEL PRODUCTS AND MUST BE RETURNED ON DEMAND. THE INFORMATION HEREON MAY NOT BE USED OR DIVULGED WITHOUT THE EXPRESSED WRITTEN PERMISSION OF CITICO CREEK MODEL PRODUCTS.</p>	<p>INTERPRET DRAWING PER ASME Y14.100</p> <p>UNLESS OTHERWISE SPECIFIED DIMENSIONS ARE IN INCHES</p> <p>TOLERANCES</p> <p>ANGLES ± 0°30'</p> <p>FRACTIONS ± 1/32</p> <p>DECIMALS ± X.05, .XX, .02, .XXX, .010</p> <p>BROKEN EDGES 0.15 MAX.</p> <p>FILLETS .015 R MAX.</p> <p>PART SHALL BE FREE OF BURRS</p> <p>SURFACE ROUGHNESS 125 ✓</p> <p>DO NOT SCALE THIS DRAWING</p> <p>THIRD ANGLE PROJECTION</p>	<p>Citico Creek Model Products PO Box 223 Lynn Haven, FL 32444</p> <p>PROJECT LOCO CARRY CASE</p> <p>Drawn B.C. 2013-12-19</p> <p>Engr/Dagn</p> <p>Checked</p> <p>Approved</p>	<p>Citico Creek Model Products</p>																																				
			<p>DETAILS METAL PARTS</p>																																				
<table border="1"> <tr> <th>REV</th> <th>STATUS</th> <th>REVISION</th> </tr> <tr> <td>10</td> <td></td> <td></td> </tr> <tr> <td>9</td> <td></td> <td></td> </tr> <tr> <td>8</td> <td></td> <td></td> </tr> <tr> <td>7</td> <td></td> <td></td> </tr> <tr> <td>6</td> <td></td> <td></td> </tr> <tr> <td>5</td> <td></td> <td></td> </tr> <tr> <td>4</td> <td></td> <td></td> </tr> <tr> <td>3</td> <td></td> <td></td> </tr> <tr> <td>2</td> <td></td> <td></td> </tr> <tr> <td>1</td> <td></td> <td></td> </tr> </table>	REV	STATUS	REVISION	10			9			8			7			6			5			4			3			2			1			<p>NEXT ASSY</p>	<p>USED ON</p>	<p>SIZE D</p>	<p>CAGE CODE -</p>	<p>DWG NO. LCA07-52</p>	<p>REV -</p>
REV	STATUS	REVISION																																					
10																																							
9																																							
8																																							
7																																							
6																																							
5																																							
4																																							
3																																							
2																																							
1																																							
<p>APPLICATION</p>			<p>SCALE AS SHOWN</p>		<p>INIT WT.</p>	<p>SHEET 1 OF 3</p>																																	



2 LCA07-40-02 - PORTAL ANGLE
MATL: ALUMINUM
SCALE: 2:1



3 LCA07-40-03 - SIDE ANGLE
MATL: ALUMINUM
SCALE: 2:1

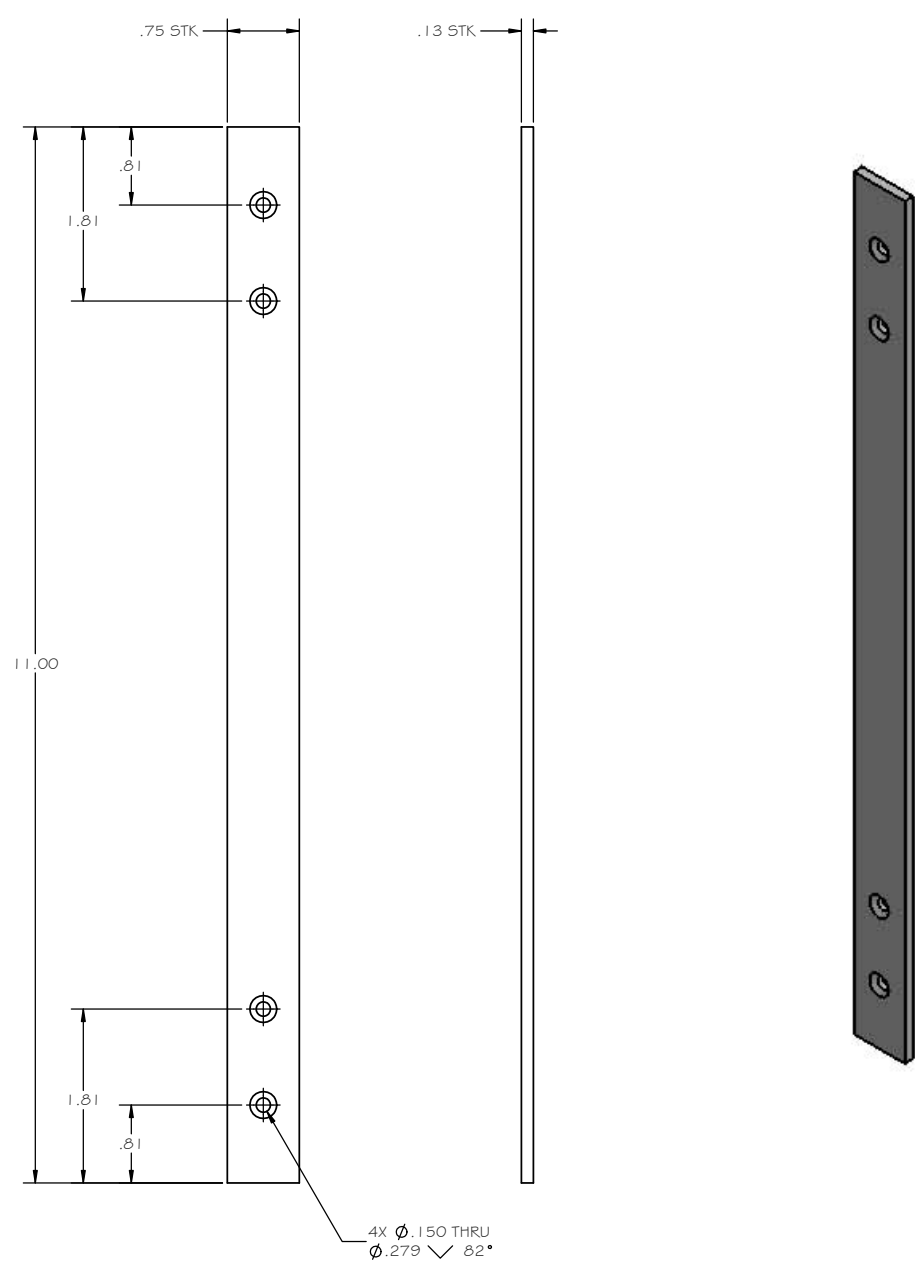


4 LCA07-40-04 - TOP CORNER ANGLE
MATL: ALUMINUM
SCALE: 1:1

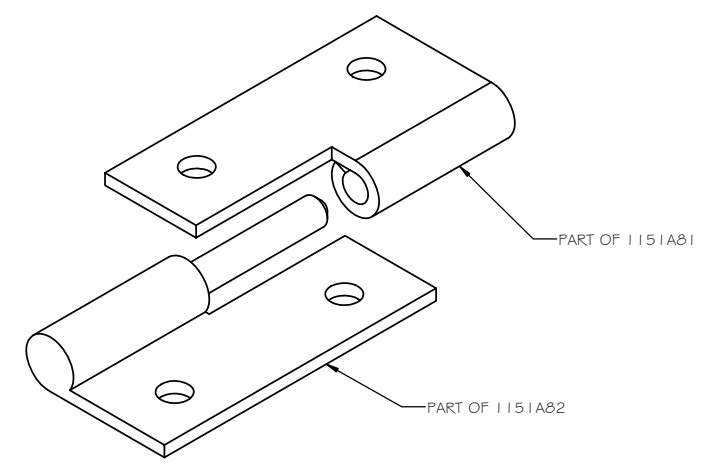
TITLE			
DETAILS METAL PARTS			
SIZE	CAGE CODE	DWG NO.	REV
D	-	LCA07-52	-
SCALE: AS SHOWN		INIT. WT.	SHEET 2 OF 3

8 7 6 5 4 3 2 1

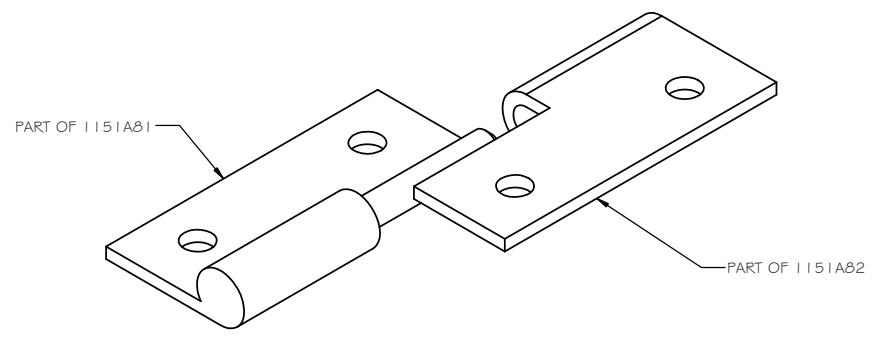
D
C
B
A



LCA07-40-05 - HANGER
 MATL: ALUMINUM
 SCALE: 1:1



④ ALTERED RIGHT HINGE \triangle I.



⑤ ALTERED LEFT HINGE \triangle I.

TITLE			
DETAILS METAL PARTS			
SIZE	CAGE CODE	DWG NO.	REV
D	-	LCA07-52	-
SCALE: AS SHOWN UNIT WT.			SHEET 3 OF 3

8 7 6 5 4 3 2 1