

8		7		6		5		4		3		2		1			
FIND NO.	QTY.	CAGE CODE	ITEM IDENTIFICATION OR PART NO	NOMENCLATURE	MATERIAL	SPECIFICATION	NOTE	ZONE	FIND NO.	QTY.	CAGE CODE	ITEM IDENTIFICATION OR PART NO	NOMENCLATURE	MATERIAL	SPECIFICATION	NOTE	ZONE
41	6		GR69-41	GRAB IRON	BRASS ROD .047 DIA	MAKE FROM 8859K91	2.		1	1		GR69-01	CENTER SILL LEFT	WOOD	3/16 X 7/16 X 12 1/4		
42	4		GR69-42	ROOF WALK BRACE	BRASS 1/32 X 1/8 X	MAKE FROM F-1-4	8.		2	1		GR69-02	CENTER SILL RIGHT	WOOD	3/16 X 7/16 X 12 1/4		
43	1		GR69-43	BRAKE STAFF	BRASS ROD 1/16 DIA	MAKE FROM F-2	8.		3	2		GR69-03	INTERMEDIATE SILL	WOOD	3/16 X 7/16 X 12 1/4		
44	1		GR69-44	CONNECTING ROD	BRASS ROD .047 DIA	MAKE FROM 8854K91	2.		4	2		GR69-04	SIDE SILL	WOOD	1/4 X 7/16 X 12 1/4		
45	2		GR69-45	LIVE LEVER ROD	BRASS ROD .047 DIA	MAKE FROM 8854K91	2.		5	2		GR69-05	END BEAM	WOOD	1/4 X 7/16 X 4		
46	1		GR69-46	FLOATING LEVER BRACKET	BRASS BAR 1/32 X 1/8 X 3/8	MAKE FROM F-1-4	8.		6	2		GR69-06	BODY BOLSTER	WOOD	3/16 X 1/2 X 3 3/4		
47	6		GR69-47	DOOR GUIDE	BRASS BAR 1/32 X 1/8 X ??	MAKE FROM F-1-4			7	2		GR69-07	KING PIN PAD	WOOD	3/16 X 1/2 X 1		
48	11		GR44-24	ROOF WALK SUPPORT	WOOD	1/8 X 3/16 X 1	8.		8	2		GR69-08	NEEDLE BEAM	WOOD	3/16 X 3/8 X 3 3/4		
49	4		GR44-33	DOOR HANGER	BRASS, 1/32 X 1/8 X .673	MAKE FROM F-1-4	8.		9	34		GR69-09	DECK PLANK	WOOD	3/32 X 3/8 X 4		
50	1		GR57-50	STIRRUP STEP	BRASS, 1/32 X 1/8	MAKE FROM F-1-4	8.		10	8		GR69-10	CORNER POST	WOOD	1/8 X 1/4 X 3 5/8		
51	1		GR65-37	BRAKE RIGGING FLOATING LEVER	BRASS, 1/32 X 1/8 X 1 3/8	MAKE FROM F-1-4	8.		11	8		GR69-11	INTERMEDIATE POST	WOOD	1/8 X 3/16 X 3 5/8		
52	1		GR65-38	BRAKE RIGGING CYLINDER LEVER	BRASS, 1/32 X 1/8 X 2	MAKE FROM F-1-4	8.		12	8		GR69-12	SIDE DIAGONAL	WOOD	1/8 X 3/16 X 4 5/16		
53	3		GR67-20	BRAKE RIGGING SUPPORT	BRASS, ROUND, .047 DIA	MAKE FROM 8859K91	2.		13	4		GR69-13	END DIAGONAL	WOOD	1/8 X 3/16 X 3 7/8		
54	8		GR67-24	QUEEN POST TUBE	TUBING, BRASS, .066 ID X .014 WALL THK	MAKE FROM 8859K18	2.		14	2		GR69-14	SIDE WALL HEADER	WOOD	3/16 X 1/4 X 12 3/4		
55	1		GR67-27	ESCUTCHEON PIN	BRASS	MAKE FROM 97936A115	2.		15	3		GR69-15	RAFTER	WOOD	1/8 X 1/2 X 3 1/2		
56	2		GR67-29	BUSHING	BUTYRATE TUBE	MAKE FROM TB8 (1/4" OD X 1/8" ID)	5.		16	1		GR69-16	RIDGE BEAM	WOOD	1/4 X 9/32 X 12 3/4		
57	4		GR67-30	TURNBUCKLE	CASTING				17	8		GR69-17	SIDE PLANK WIDE	WOOD	1/16 X 5/8 X 5 1/4		
58	8		GR67-31	NUT & WASHER CASTING, TRUSS ROD	CASTING				18	20		GR69-18	SIDE PLANK NARROW	WOOD	1/16 X 3/8 X 5 1/4		
59	58		GR67-39	CARRIAGE BOLT	STEEL	MAKE FROM 304865	9.		19	14		GR69-19	END WALL PLANK	WOOD	1/32 X 1/2 X 4 3/8		
60	2		90016A009	TAPPING INSERT FOR WOOD	BRASS No 8-32 UNC		2.		20	4		GR69-20	END CORNER PLANK	WOOD	1/32 X 1/8 X 4 3/8		
61	8		95395A101	WASHER, FLAT	BRASS	.062 ID x .125 OD x .015 THK	2.		21	2		GR69-21	END FACIA	WOOD	1/32 X 9/16 X 3 7/8		
62	8		91545A420	WASHER, FLAT	NYLON	3.2mm ID X 7mm OD X .5mm THK	2.		22	50		GR69-22	ROOF PLANK	WOOD	1/32 X 1/2 X 2 1/16		
63	2		92916A335	WASHER, FLAT	BRASS	0.172" ID X 0.375" OD X 0.031" THK	2.		23	4		GR69-23	ROOF END PLANK	WOOD	1/32 X 1/4 X 2 1/16		
64	2		94070A194	SCREW, MACHINE, PAN HEAD	BRASS, No 8-32 UNC x 1/2" LG		2.		24	2		GR69-24	BUFFER BLOCK	WOOD	1/4 X 7/16 X 1 1/2		
65	2		R2032	ARCH BAR TRUCK	PLASTIC		4.		25	3		GR69-25	ROOF WALK PLANK	WOOD	1/32 X 5/16 X 13		
66	4		92421	WHEEL SET	STEEL, 31.0mm DIAMETER		3.		26	1		GR69-26	LADDER TOP POST	WOOD	1/8 X 1/8 X 1 1/4		
67	2		1831	COUPLER, LARGE OFFSET	PLASTIC		6.		27	1		GR69-27	LADDER BOTTOM POST	WOOD	1/8 X 1/8 X 2 5/16		
68	1		1018	BRAKE WHEEL	CASTING		7.		28	4		GR69-28	DOOR RAIL	WOOD	1/32 X 1/4 X 3 9/16		
69	1		0045	K VALVE MASTER	CASTING		7.		29	4		GR69-29	DOOR STILE	WOOD	1/32 X 1/4 X 2 3/8		
70	1		0045	K VALVE SLAVE	CASTING		7.		30	22		GR69-30	DOOR RIB	WOOD	1/32 X 3/16 X 3 3/4		
									31	4		GR69-31	DOOR BRACE	WOOD	1/32 X 3/16 X 2 3/4		
									32	2		GR69-32	DOOR SLIDE	WOOD	1/16 X 1/8 X 5 1/2		
									33	2		GR69-33	ROOF WALK TIE	WOOD	1/32 X 1/4 X 1		
									34	2		GR69-34	BRAKE CYLINDER MOUNTING PLANK	WOOD	1/32 X 3/8 X 15/16		
									35	9		GR69-35	COTTER PIN NEEDLE	BRASS, 1/16 DIA	MAKE FROM 98450A106	2.	
									36	8		GR69-36	COTTER PIN BOLSTER	BRASS, 1/16 DIA	MAKE FROM 98450A106	2.	
									37	4		GR69-37	TRUSS ROD INNER	BRASS ROD 1/16 DIA	MAKE FROM R-2	8.	
									38	4		GR69-38	TRUSS ROD OUTER	BRASS ROD 1/16 DIA	MAKE FROM R-2	8.	
									39	2		GR69-39	DOOR TRACK	BRASS ROD 1/16 DIA	MAKE FROM R-2	8.	
									40	4		GR69-40	GUSSET PLATE	BRASS BAR .016 X 1/2	MAKE FROM F-1X-16	8.	

NOTES:

- BELOW LISTED SUPPLIERS ARE THOSE USED IN THE DEVELOPMENT OF THIS DRAWING PACKAGE. ALTERNATE SUPPLIERS MAY BE USED AT THE BUILDERS OPTION. I HAVE NO AFFILIATION WITH ANY OF THE SUPPLIERS NOTED BELOW.
- PART NUMBER LISTED IS FOR MCMASTER-CARR SUPPLY COMPANY, 6100 SULTON INDUSTRIAL BLVD., ATLANTA, GA 30336 (404) 346-7000.
- PART NUMBER LISTED IS FOR BACHMANN INDUSTRIES, 1400 EAST ERIE AVENUE, PHILADELPHIA, PA 19142 (215) 533-1600.
- PART NUMBER LISTED IS FOR USA TRAINS, PO BOX 100, MALDEN, MA 02148 (781) 322-6084.
- PART NUMBER LISTED IS FOR PLASTRUCT, INC., 1020 SOUTH WALACE PLACE, CITY OF INDUSTRY, CA 91748 (636) 912-7016 OR (800) 666-7015.
- PART NUMBER LISTED IS FOR KADEE QUALITY PRODUCTS, 673 AVENUE C, WHITE CITY, OR 97503 (541) 826-3883.
- PART NUMBER LISTED IS FOR OZARK MINIATURES, INC., 3461 S 5225W, CEDAR CITY, UT 84720 (435)586-1036.
- PART NUMBER LISTED IS FOR SPECIAL SHAPES, 6911 W 59th STREET, CHICAGO, IL 60638 (773) 586-8517.
- PART NUMBER LISTED IS FOR HOBBY LOBBY, 7600 A SW 44th STREET, OKLAHOMA CITY, OK 73173 (800) 888-0321
- MANY OF THE ABOVE ITEMS MAY BE PURCHASED FROM YOUR LOCAL HOBBY SHOP OR YOUR PREFERRED ONLINE SUPPLIER.
- ADDITIONAL ADHESIVES, PAINTS, DECALS, ETC., MAY BE FOUND AT HOBBY LOBBY, MICHAELS OR JO ANNES FABRICS.
- LOCTITE 242 THREAD LOCKER MAY BE FOUND AT FASTENAL (www.fastenal.com)

THIS DRAWING PACKAGE IS AN ENHANCEMENT TO THE DRAWINGS PUBLISHED IN GARDEN RAILWAYS MAGAZINE ORIGINALLY DRAWN AND PROVIDED BY TED STINSON.

- ORIGINAL ISSUE.		DATE	APPROVED
ZONE	LTR	DESCRIPTION	REVISIONS
Citico Creek Model Products			
Citico Creek Model Products PO Box 223 Lynn Haven, FL 32444		TITLE	
PROJECT		SHORT STOCK CAR	
Drawn	B.C.	2015-09-30	
Checked			
Approved			
SIZE	CAGE CODE	DWG NO.	REV
D	-	GR Plan Set 69	-
SCALE	NONE	UNIT WT.	SHEET 1 OF 7

CAD GENERATED DRAWING. CHANGES SHALL BE INCORPORATED BY THE CURRENT DESIGN ACTIVITY.

THIS DOCUMENT IS THE PROPERTY OF CITICO CREEK MODEL PRODUCTS AND MUST BE RETURNED ON DEMAND. THE INFORMATION HEREON MAY NOT BE USED OR DIVULGED WITHOUT THE EXPRESSED WRITTEN PERMISSION OF CITICO CREEK MODEL PRODUCTS.

INTERPRET DRAWING PER ASME Y14.1-100
UNLESS OTHERWISE SPECIFIED DIMENSIONS ARE IN INCHES
TOLERANCES
ANGLES ± 0°30'
FRACTIONS ± 1/32
DECIMALS ± .05, .XX, .02, .XXX, .010
BROKEN EDGES 0.15 MAX.
FILETS .015 R MAX.
PART SHALL BE FREE OF BURRS
SURFACE ROUGHNESS 125 ✓

DO NOT SCALE THIS DRAWING

THIRD ANGLE PROJECTION

REVISION SHEET

10	9	8	7	6	5	4	3	2	1
----	---	---	---	---	---	---	---	---	---

REV STATUS OF SHEETS

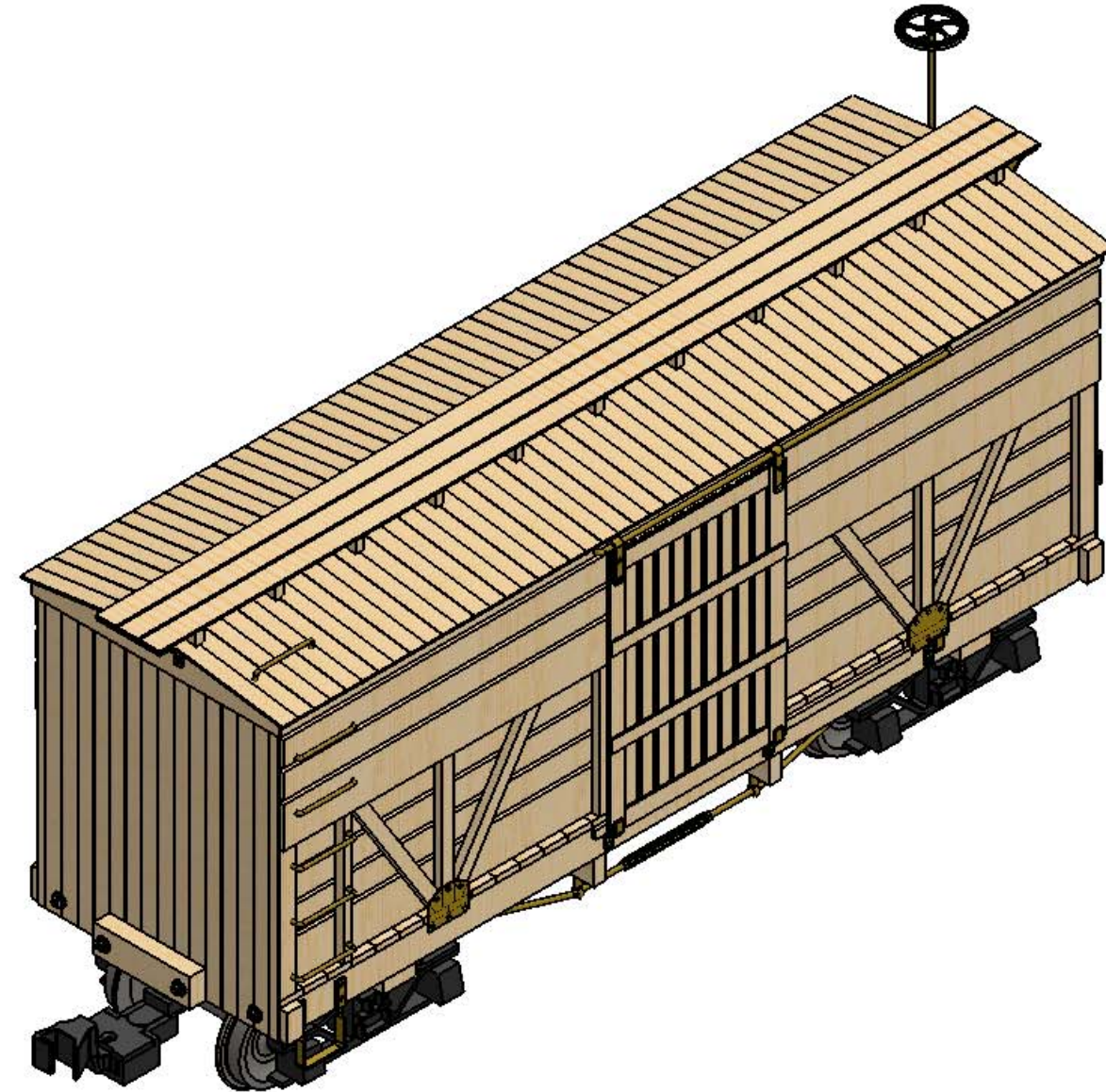
NEXT ASSY USED ON APPLICATION

SUGGESTED ASSEMBLY INSTRUCTIONS

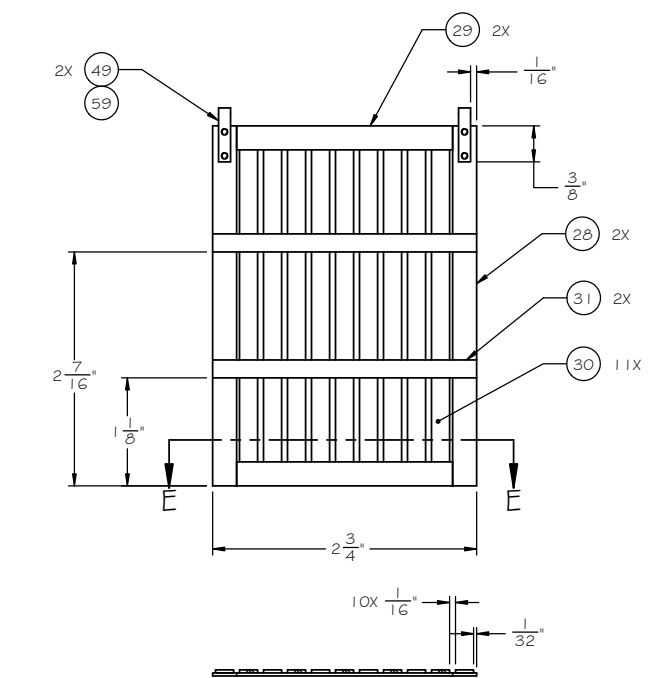
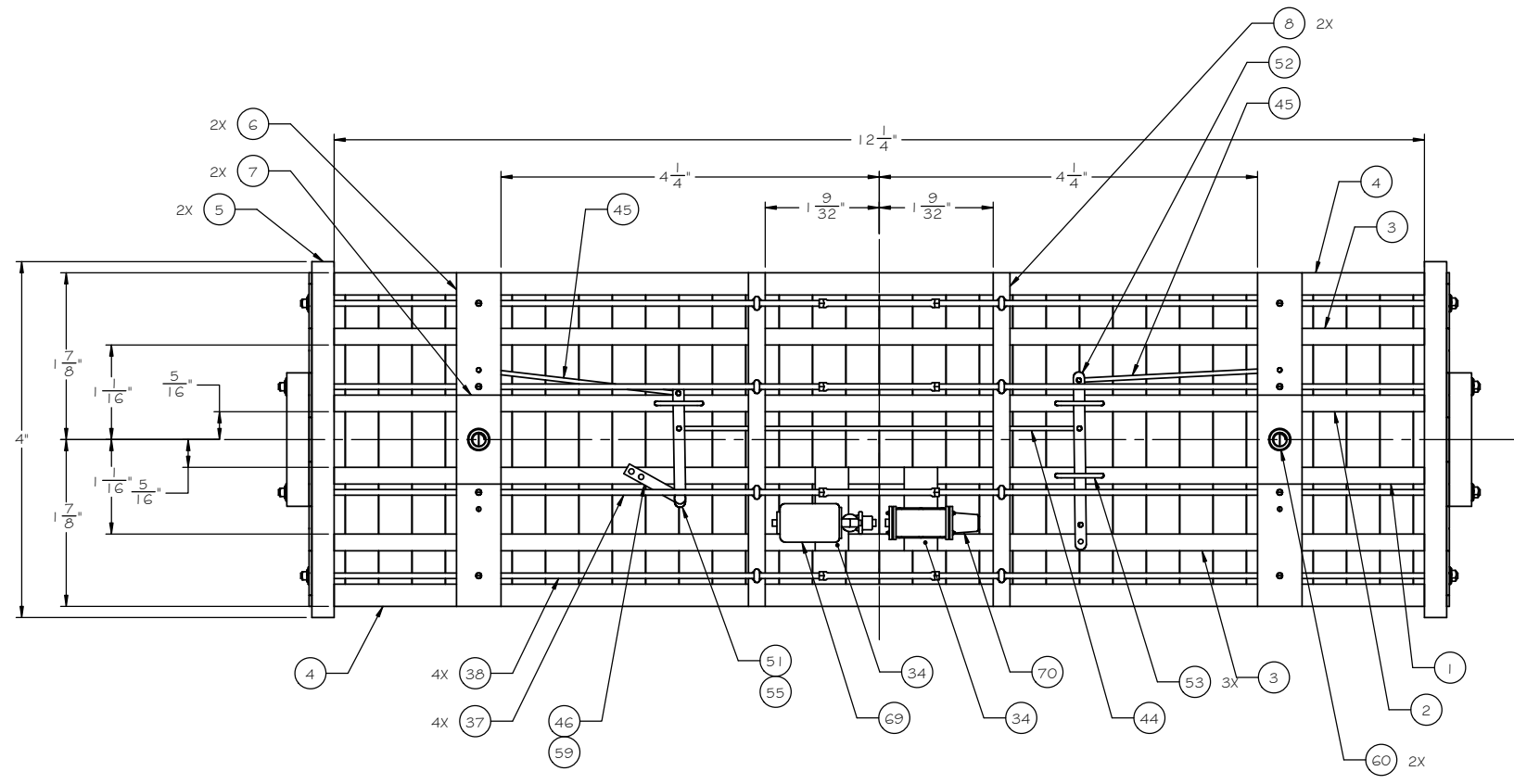
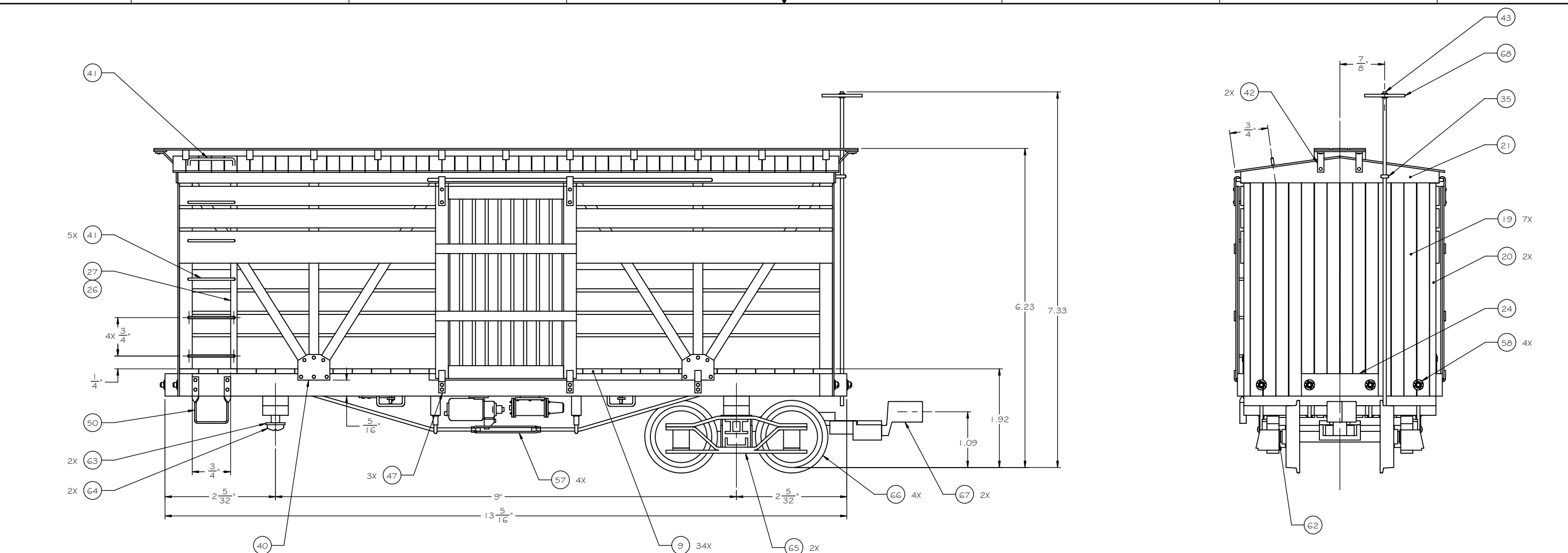
1. FIND FIND NUMBER 34 (BRAKE CYLINDER MOUNTING PLANK), FIND NUMBERS 44 THRU 46 (CONNECTIGN ROD, LIVE LEVER ROD, BRAKE RIGGING FLOATING LEVER BRACKET), 51 THRU 53 (BRAKE RIGGING FLOATING LEVER, BRAKE RIGGING CYLINDER LEVER, BRAKE RIGGING SUPPORT), FIND NUMBER 55 (ESCUTCHEON PIN), AND FIND NUMBERS 69 & 70 (CYLINDER MASTER, CYLINDER SLAVE) MAY BE ELIMINATED IF BRAKE RIGGING DETAIL IS NOT DESIRED.
2. ASSEMBLE FIND NUMBERS 54 (QUEEN POST TUBE), 35 (COTTER PIN EEDLE) AND G1 (WASHER, FLAT) AND SOLDER TO MAKE A QUEEN POST (8 REQUIRED).
3. SLIP ONE EACH QUEEN POST ASSEMBLY AND FIND NUMBER 36 (COTTER PIN BOLSTER) ON TO EACH FIND NUMBER 37 (TRUSS ROD INNER) AND FIND NUMBER 38 (TRUSS ROD OUTER). QUEEN POST ASSEMBLY SHOULD BE ON THE SHORT LEG OF THE TRUSS ROD (TOWARD THE CENTER OF THE CAR).
4. ASSEMBLE FIND NUMBERS 6 (BODY BOLSTER) AND 7 (KING PIN BLOCK) SEPARATELY. AFTER GLUE HAS COMPLETELY DRIED, DRILL 1/4" HOLE AS SHOWN. INSTALL FIND NUMBER 60 (TAPPING INSERT FOR WOOD) IN 1/4" HOLE WITH SCREW DRIVER SLOT LOCATED ON FIND NUMBER 6 SIDE OF ASSEMBLY. COATING THE HOLE WITH THICK CA PRIOR TO INSTALLING THE TAPPING INSERT WILL SECURE IT IN PLACE PERMANENTLY. LOCATE AND INSTALL BOLSTER ASSEMBLY ON FRAME.
5. ASSEMBLE MAIN FRAME COMPONENTS FIND NUMBERS 1 (CENTER SILL, LEFT), 2 (CENTER SILL, RIGHT), 3 (INTERMEDIATE SILL), 4 (SIDE SILL), 5 (END BEAM), AND 8 (NEEDLE BEAM) UPSIDE DOWN USING A GOOD QUALITY WOOD GLUE. SLIP TRUSS RODS THROUGH HOLES IN END BEAMS. INSTALL COTTER PINS IN MATING HOLES IN BOLSTER AND NEEDLE BEAM SECURING WITH THICK CA. INSTALL FIND NUMBER 57 (TURNBUCKLE) BY SLIDING FIRST ON TO ONE SIDE TRUSS ROD THEN BACK ONTO THE OTHER. INSTALL FIND NUMBER 9 (DECK PLANK) CENTERING ON THE LENGTH OF THE FRAME.
6. SHOULD BRAKE RIGGING DETAIL BE DESIRED, THIS WOULD BE A GOOD TIME TO INSTALL IT.
7. MAKE TWO SUB ASSEMBLIES OF THE SIDE WALLS CONSISTING OF FIND NUMBERS 10, 11, 12, 26, 27 (CORNER POST, INTERMEDIATE POST, SIDE DIAGONAL, LADDER TOP POST, LADDER BOTTOM POST), FIND NUMBER 14 (SIDE WALL HEADER) AND FIND NUMBERS 17, AND 18 (SIDE PLANK WIDE, SIDE PLANK NARROW) AS SHOWN. INSTALL SIDE WALL SUB ASSEMBLIES USING FIND NUMBER 15 (RAFTER) FOR STABILIZATION, ONE RAFTER ON EACH END AND ONE CENTERED. INSTALL INTERMEDIATE POSTS AND FIND NUMBER 13 (END DIAGONAL) ON CAR ENDS. INSTALL FIND NUMBER 16 (RIDGE BEAM).
8. INSTALL FIND NUMBER 19 (END WALL PLANK) CENTERED ON END FRAMING, THEN INSTALL FIND NUMBER 20 (END CORNER PLANK), FOLLOWED BY FIND NUMBER 21 (END FACIA).
9. INSTALL FIND NUMBERS 22, 23, 48, 25, 42, 33 (ROOF PLANK, ROO END PLANK, ROOF WALK SUPPORT, ROOF WALK PLANK, ROOF WALK SUPPORT, ROOF WALK TIE) COMPLETING THE ROOF SYSTEM.
10. INSTALL FIND NUMBERS 39 (DOOR TRACK) ON BOTH SIDES OF THE CAR.
11. MAKE TWO DOOR SUB ASSEMBLIES CONSISTING OF FIND NUMBERS 28, 29, 30, 31, AND 49 (DOOR RAIL, DOOR STILE, DOOR RIB, DOOR BRACE AND DOOR HANGER).
12. INSTALL FIND NUMBERS 32 (DOOR SLIDE), AND FIND NUMBER 40 (GUSSET PLATE). INSTALL DOOR SUB ASSEMBLIES USING FIND NUMBER 48 (DOOR GUIDE) TO RETAIN TO CAR SIDE. INSTALL FIND NUMBER 41 (GRAB IRONS) AS SHONW ON DRAWING. INSTALL FIND NUMBER 24 (BUFFER BLOCK) OVER TRUSS ROD ENDS, THEN INSTALL FIND NUMBER 58 (NUT & WASHER CASTING) ON TRUSS RODS. INSTALL FIND NUMBER 50 (STIRRUP STEP)
13. INSTALL FIND NUMBER 35 (COTTER PIN NEEDLE) USED AS A GUIDE FOR THE BRAKE STAFF, FIND NUMBER 43 (BRAKE STAFF), AND FIND NUMBER 68 (BRAKE WHEEL) ON CAR END AS SHOWN.

SUGGESTED ASSEMBLY INSTRUCTIONS CONT'D

14. FIND NUMBER 65 (ARCH BAR TRUCK), DRILL KING PIN HOLE OUT TO 1/4" (.250) DIAMETER. CUT FIND NUMBER 56 (BUSHING) FROM TB8 TUBE APPROXIMATELY 1/4" LONG. INSTALL BUSHING IN KING PIN HOLE IN TRUCK BOLSTER MAKING IT FLUSH ON THE BOTTOM OF THE BOLSTER. SECURE USING ACC OR SOLVENT, AND ALLOW TO SET OVERNIGHT. ONCE SET, FILE BUSHING FLUSH WITH THE TOP OF BOLSTER. DRILL BUSHING OUT TO 0.172 (1 1/64") DIAMETER.
15. ASSEMBLE FIND NUMBER 66 (WHEEL SET) INTO FIND NUMBER 65 USING FIND NUMBER 62 (WASHER, FLAT) TO CENTER AXLES IN THE TRUCK SIDE FRAMES. THESE WASHERS MAY VARY IN THICKNESS, USE IN MULTIPLES OF 2 ON EACH AXLE. WHEEL SET SHOULD SPIN FREELY AFTER INSTALLATION. INSTALL ASSEMBLED TRUCK ON TO CAR BODY USING FIND NUMBER 63 (FLAT WASHER) AND FIND NUMBER 64 (MACHINE SCREW)
16. ASSEMBLE FIND NUMBER 67 (COUPLER, LARGE OFFSET) TO FIND NUMBER 65 (ARCH BAR TRUCK) USING FASTENERS SUPPLIED.

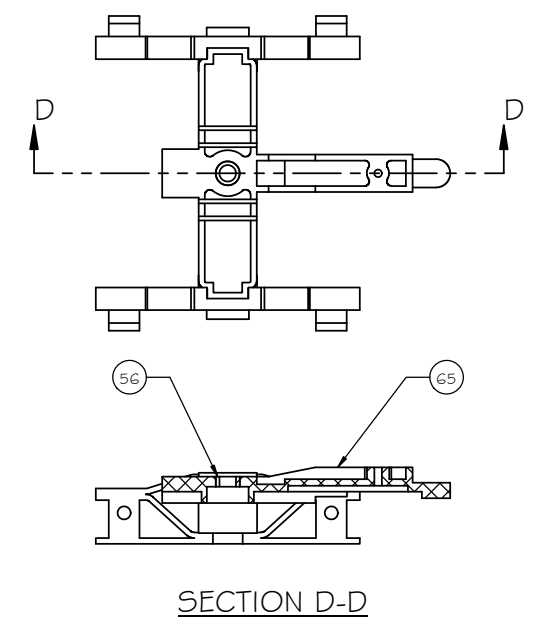
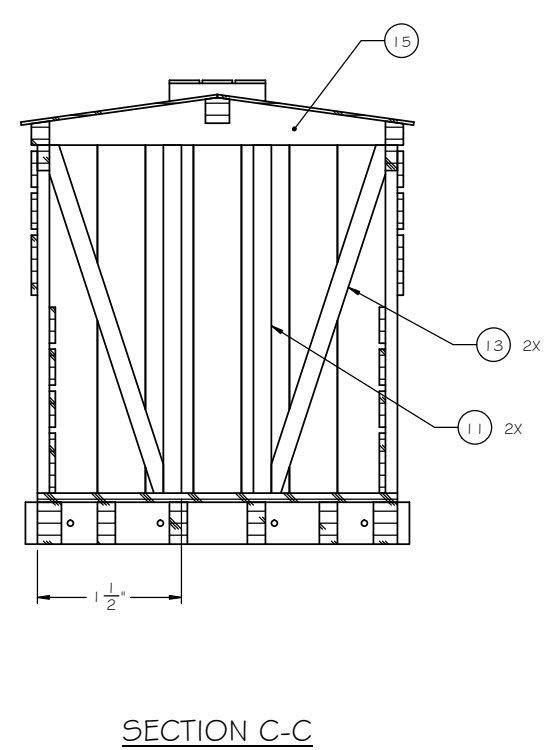
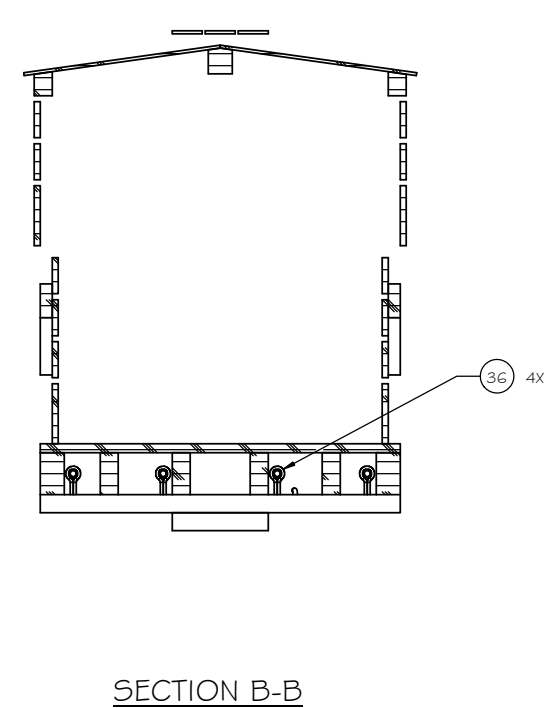
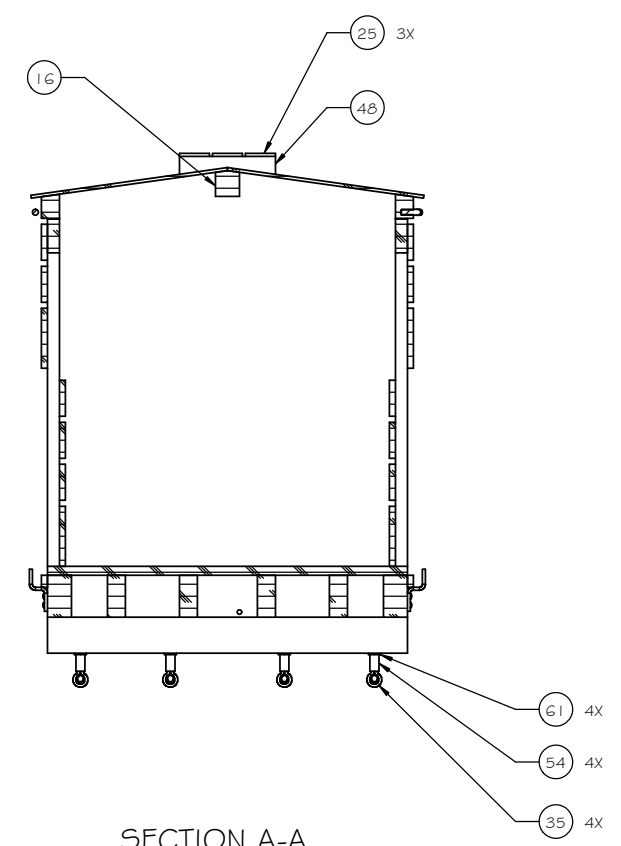
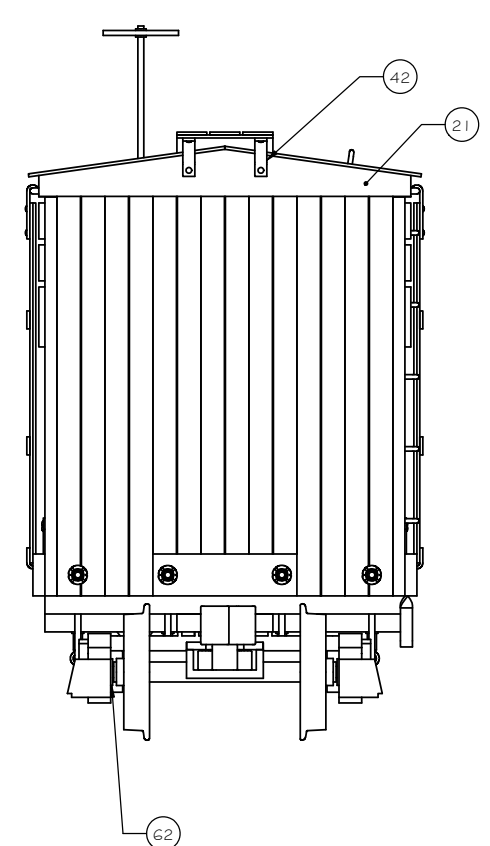
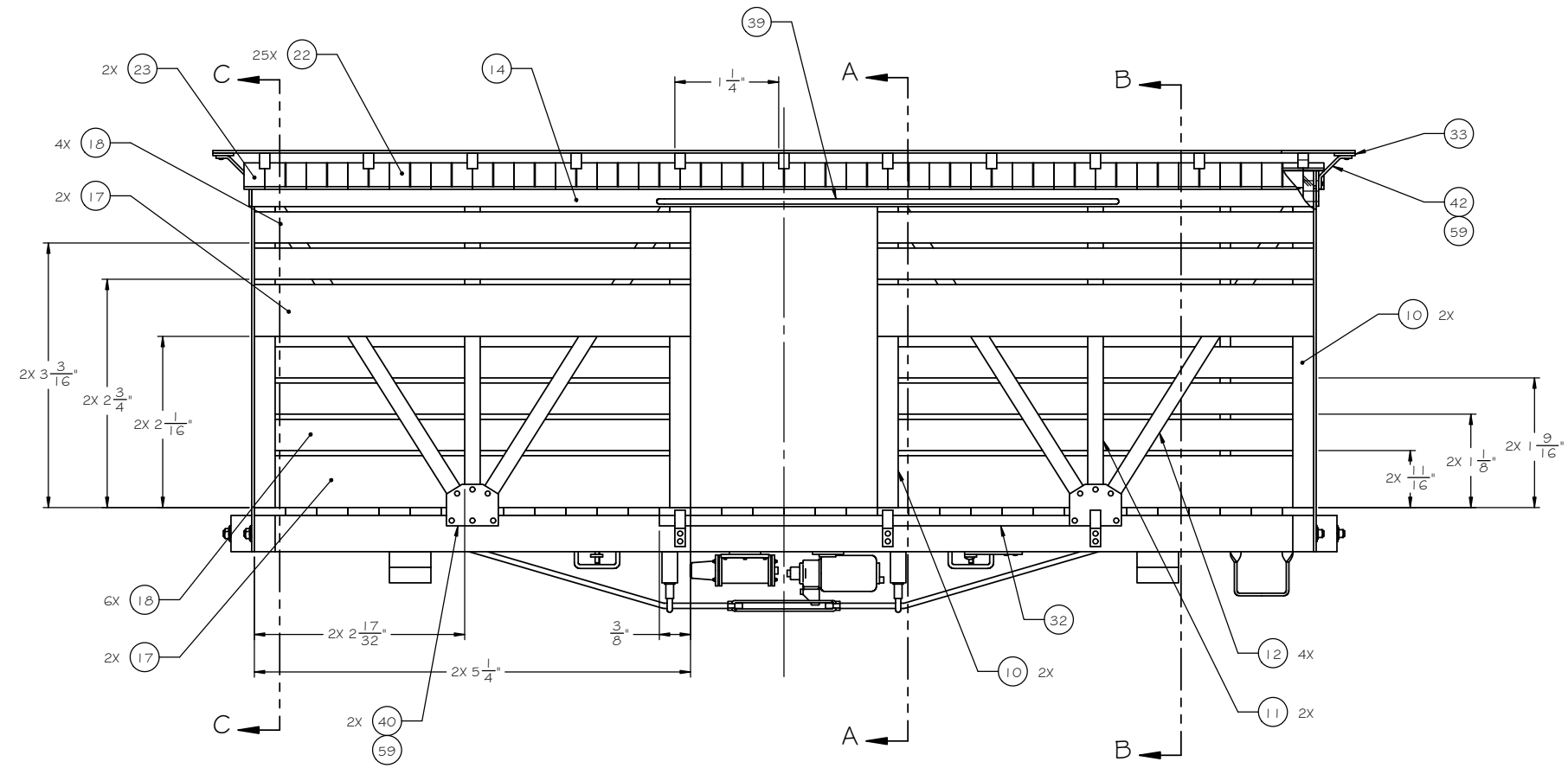


TITLE			
SHORT STOCK CAR			
SIZE	CAGE CODE	DWG NO.	REV
D	-	GR Plan Set 69	-
SCALE	NONE	UNIT WT.	SHEET 2 OF 7

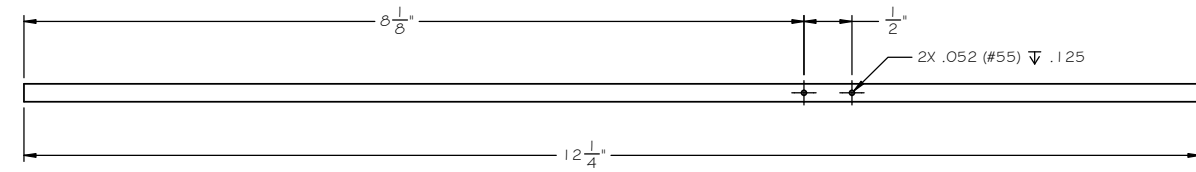


SECTION E-E

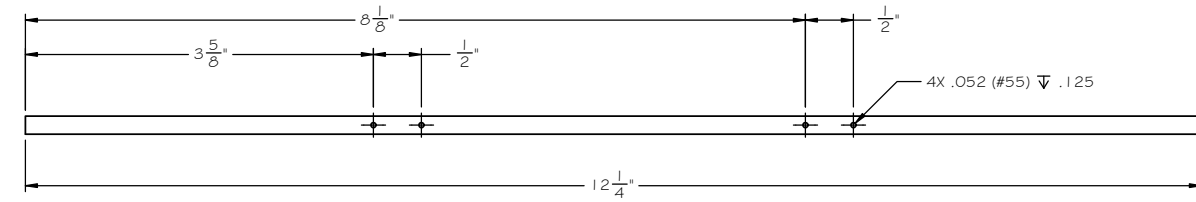
TITLE			
SHORT STOCK CAR			
SIZE	CAGE CODE	DWG NO.	REV
D	-	GR Plan Set 69	-
SCALE	NONE	UNIT WT.	SHEET 3 OF 7



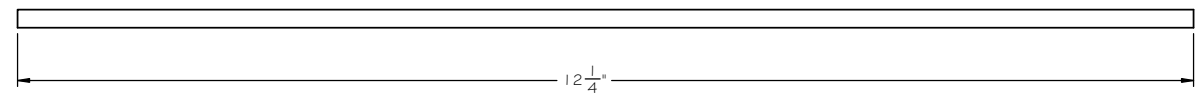
TITLE			
SHORT STOCK CAR			
SIZE	CAGE CODE	DWG. NO.	REV.
D	-	GR Plan Set 69	-
SCALE	NONE	UNIT WT.	SHEET 4 OF 7



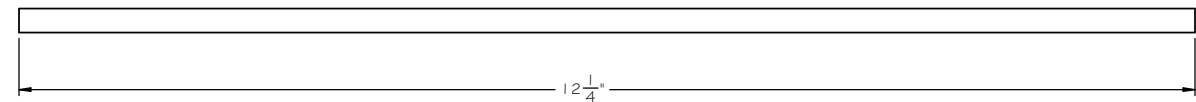
GR69-01 CENTER SILL LEFT



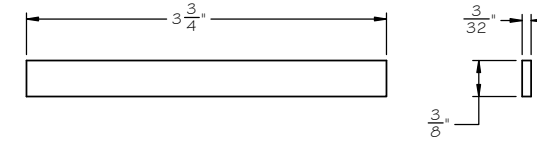
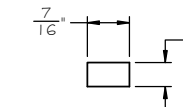
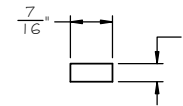
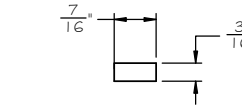
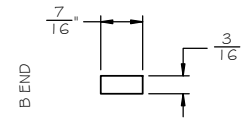
GR69-02 CENTER SILL RIGHT



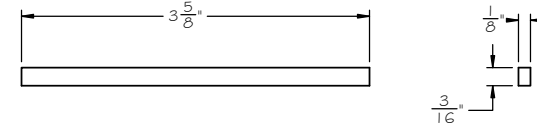
GR69-03 INTERMEDIATE SILL



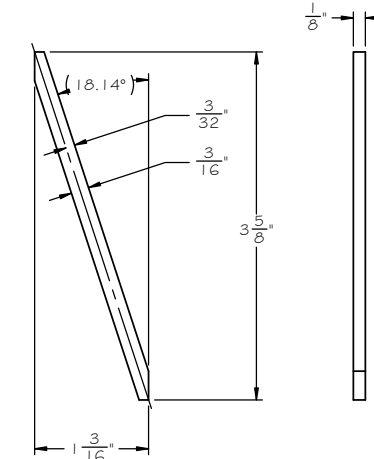
GR69-04 SIDE SILL



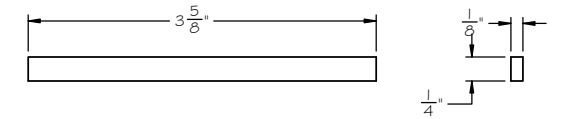
GR69-09 DECK PLANK



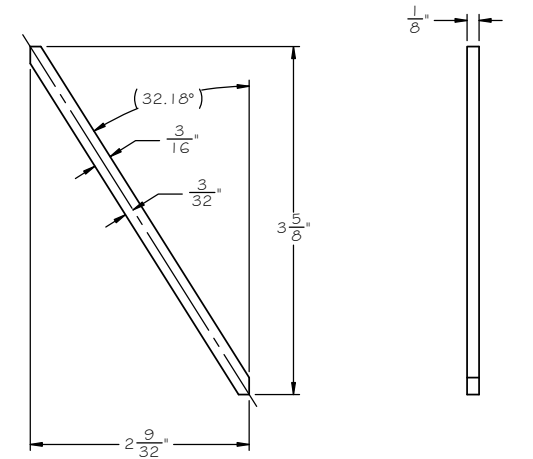
GR69-11 INTERMEDIATE POST



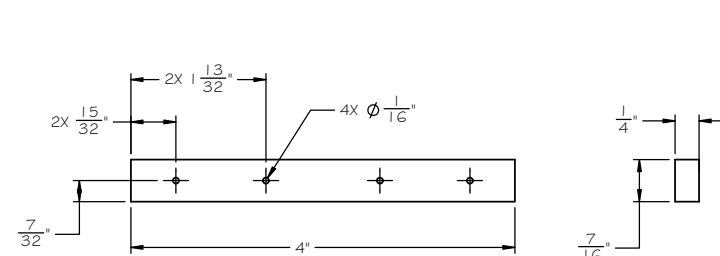
GR69-13 END DIAGONAL



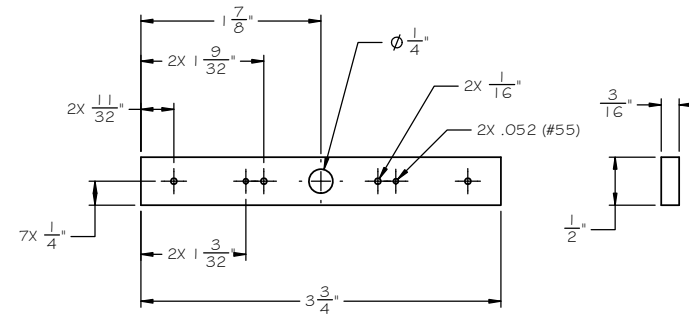
GR69-10 CORNER POST



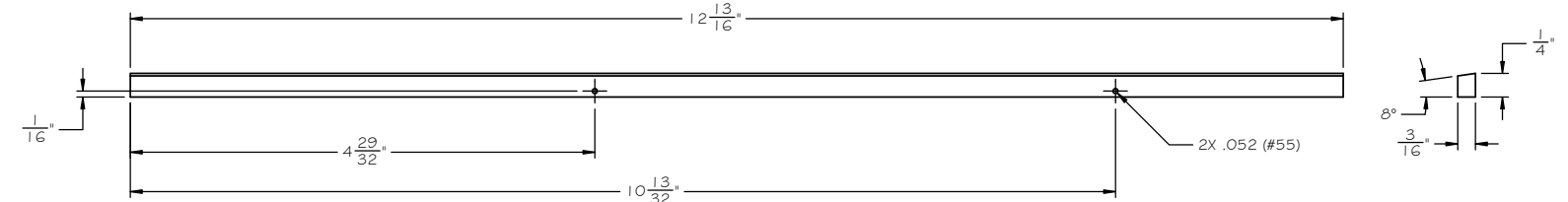
GR69-12 SIDE DIAGONAL



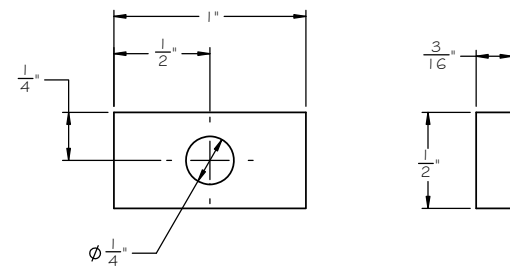
GR69-05 END BEAM



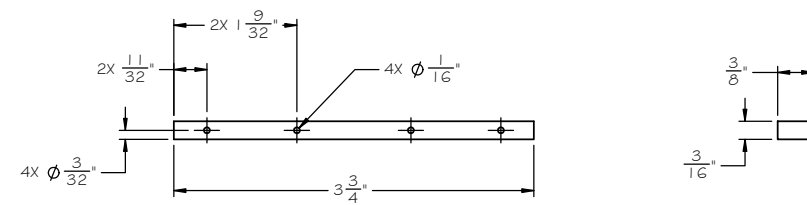
GR69-06 BODY BOLSTER



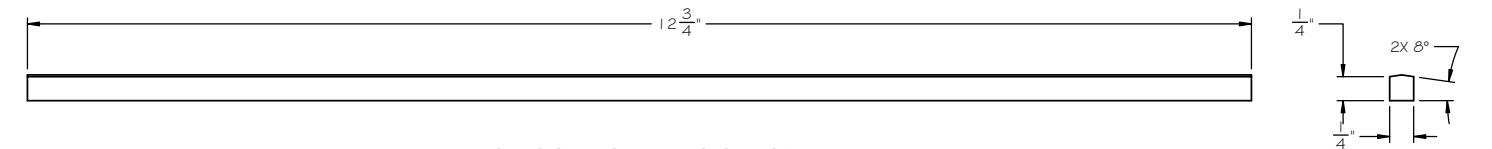
GR69-14 SIDE WALL HEADER



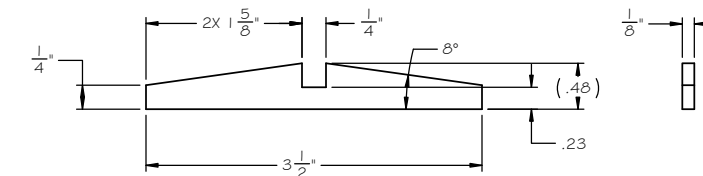
GR69-07 KING PIN PAD



GR69-08 NEEDLE BEAM

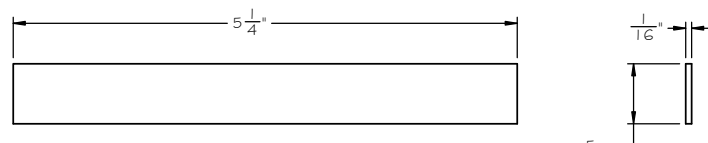


GR69-16 RIDGE BEAM

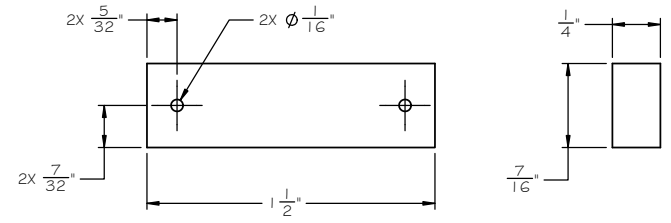


GR69-15 RAFTER

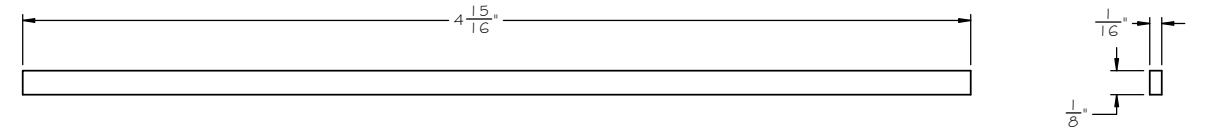
TITLE			
SHORT STOCK CAR			
SIZE	CAGE CODE	DWG. NO.	REV
D	-	GR Plan Set 69	-
SCALE	NONE	UNIT WT.	SHEET 5 OF 7



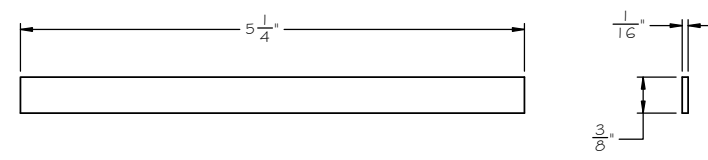
GR69-17 SIDE PLANK WIDE



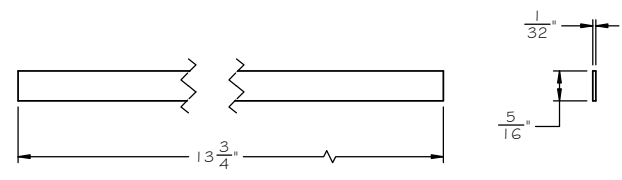
GR69-24 BUFFER BLOCK



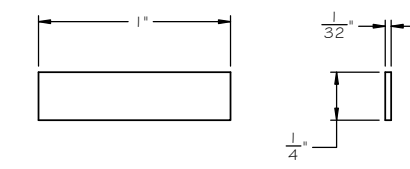
GR69-32 DOOR SLIDE



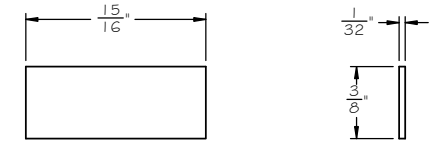
GR69-18 SIDE PLANK NARROW



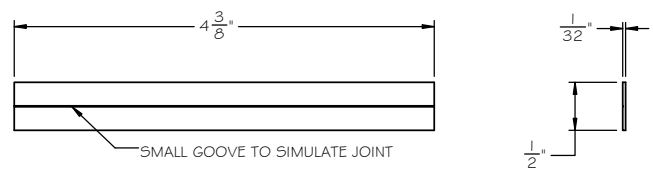
GR69-25 ROOF WALK PLANK



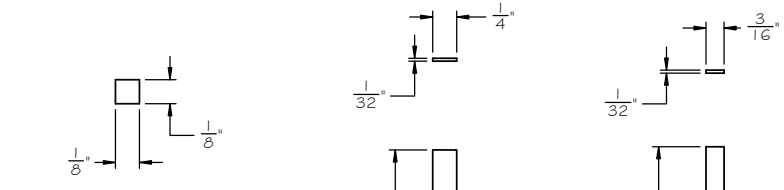
GR69-33 ROOF WALK TIE



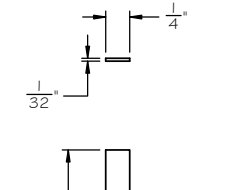
GR69-34 BRAKE CYLINDER MOUNTING PLANK



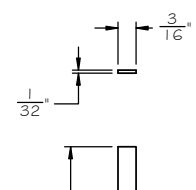
GR69-19 END WALL PLANK



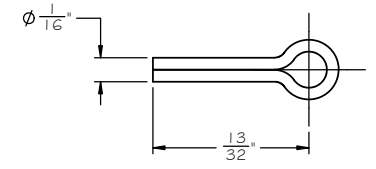
GR69-26 LADDER TOP POST



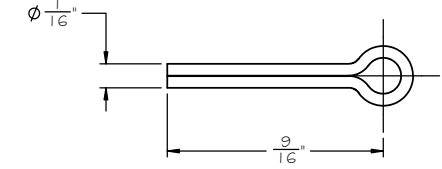
GR69-28 DOOR RAIL



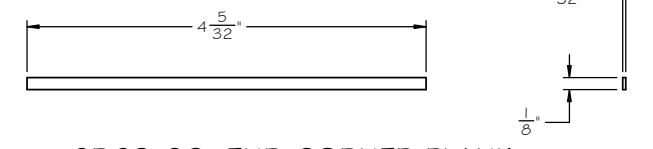
GR69-30 DOOR RIB



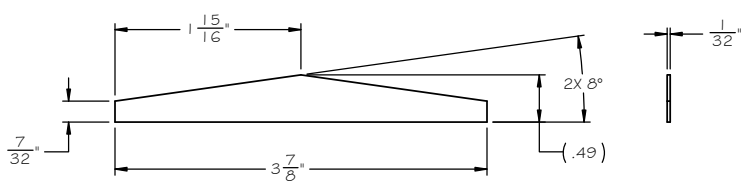
GR69-35 COTTER PIN NEEDLE



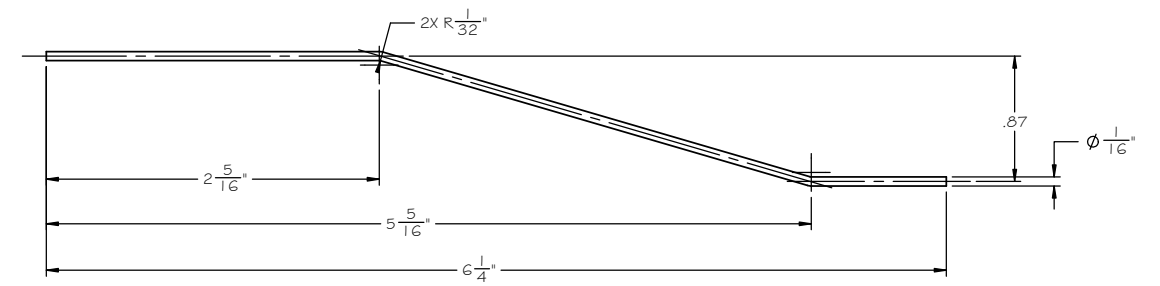
GR69-36 COTTER PIN BOLSTER



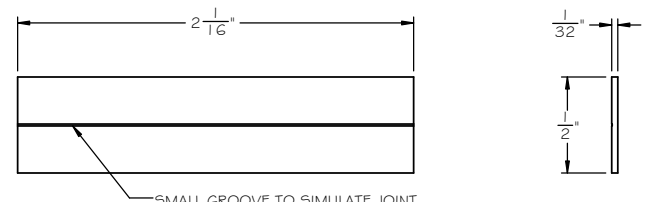
GR69-20 END CORNER PLANK



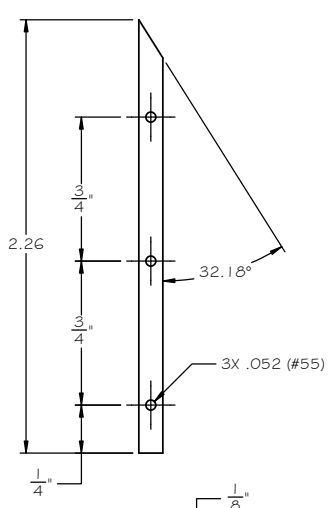
GR69-21 END FACIA



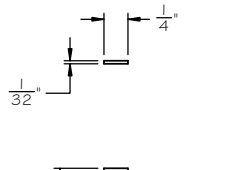
GR69-37 TRUSS ROD INNER



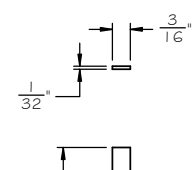
GR69-22 ROOF PLANK



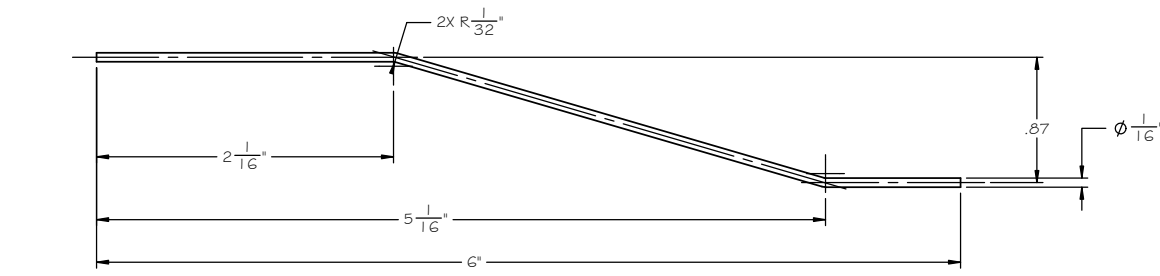
GR69-27 LADDER BOTTOM POST



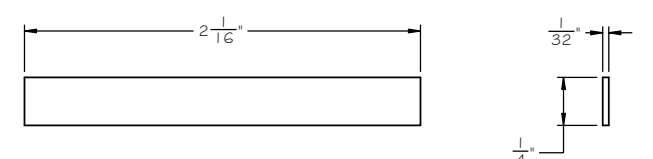
GR69-29 DOOR STILE



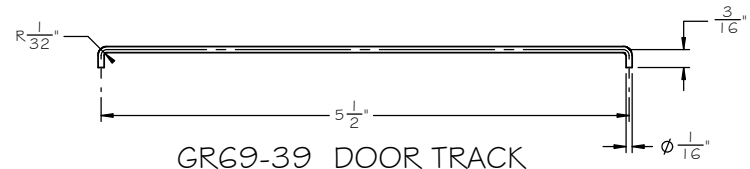
GR69-31 DOOR BRACE



GR69-38 TRUSS ROD OUTER

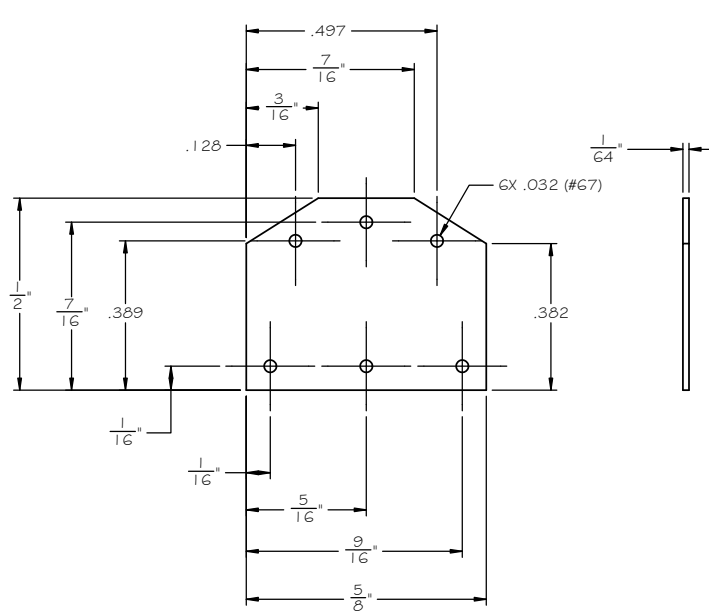


GR69-23 ROOF END PLANK

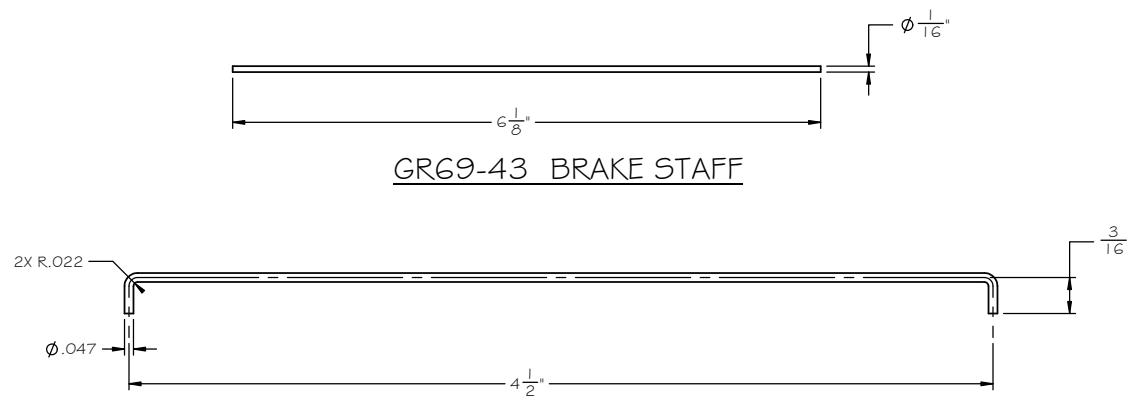


GR69-39 DOOR TRACK

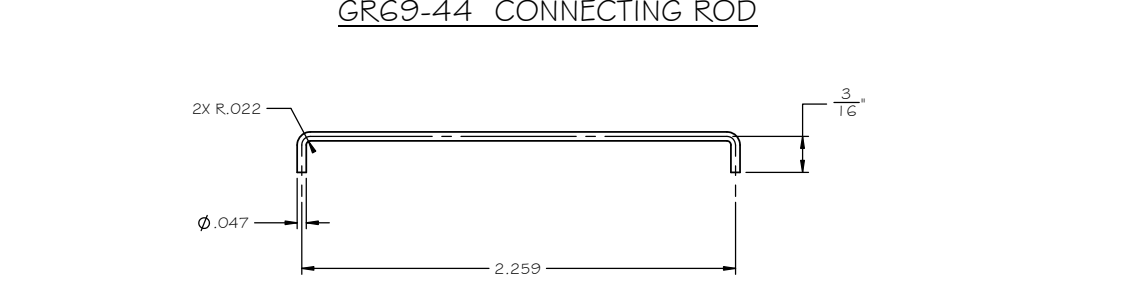
TITLE			
SHORT STOCK CAR			
SIZE	CAGE CODE	DWG. NO.	REV.
D	-	GR Plan Set G9	-
SCALE	NONE	UNIT WT.	SHEET 6 OF 7



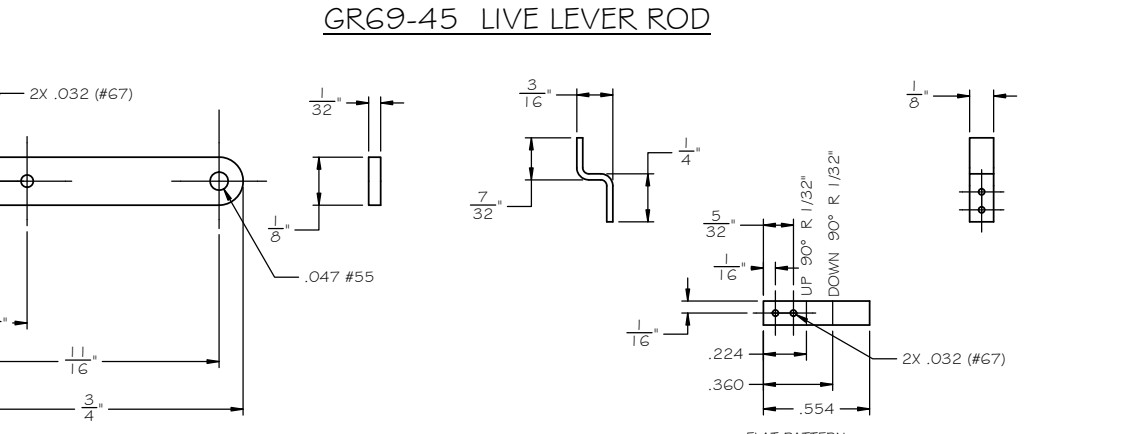
GR69-40 GUSSET PLATE



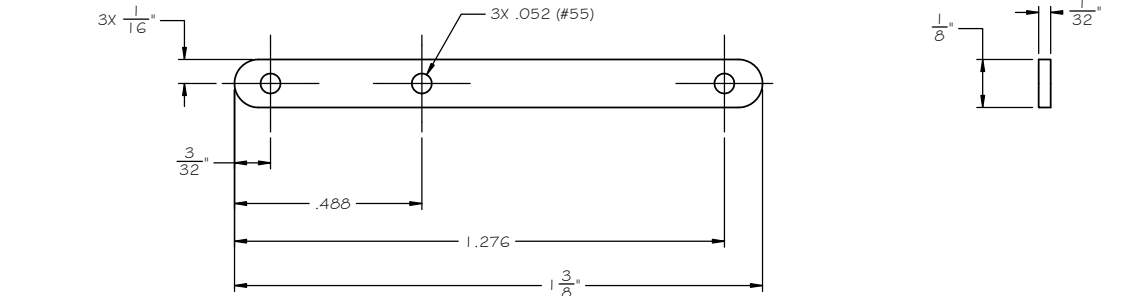
GR69-43 BRAKE STAFF



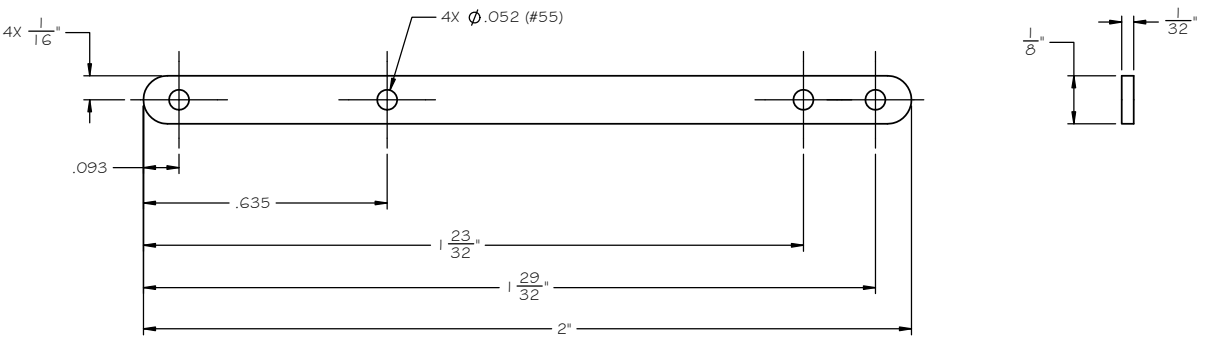
GR69-44 CONNECTING ROD



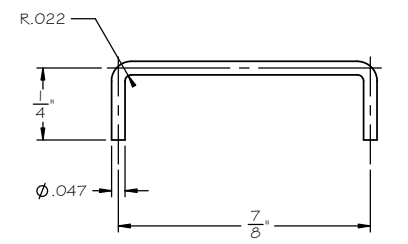
GR69-45 LIVE LEVER ROD



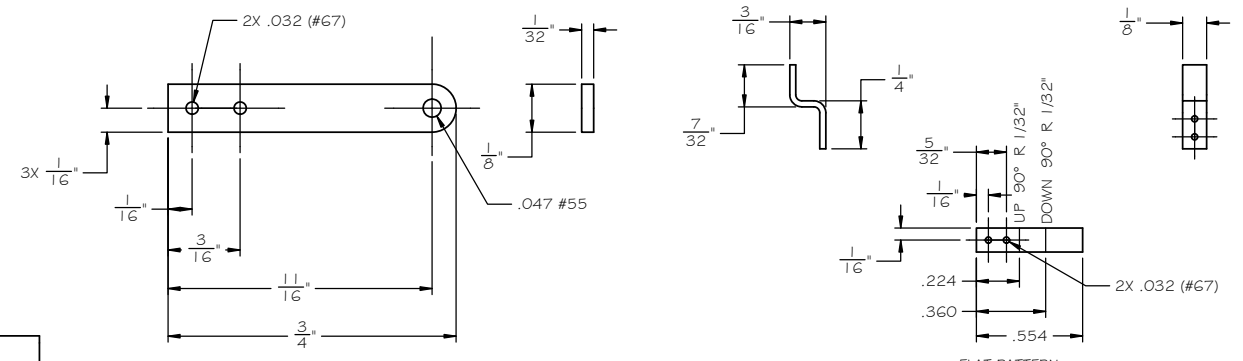
GR65-37 BRAKE RIGGING FLOATING LEVER



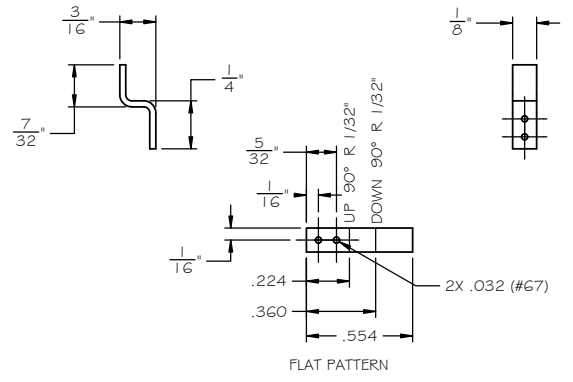
GR65-38 BRAKE RIGGING CYLINDER LEVER



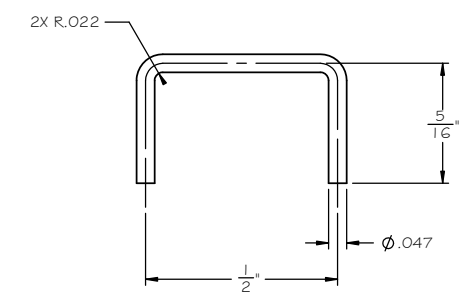
GR69-41 GRAB IRON



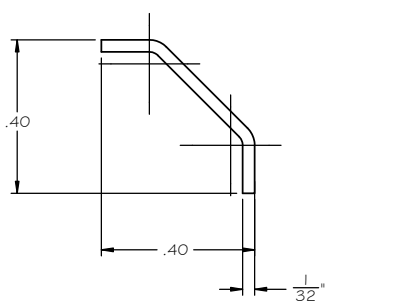
GR69-46 FLOATING LAVER BRACKET



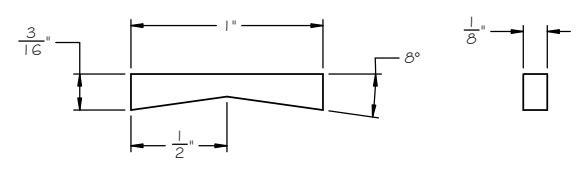
GR69-47 DOOR GUIDE



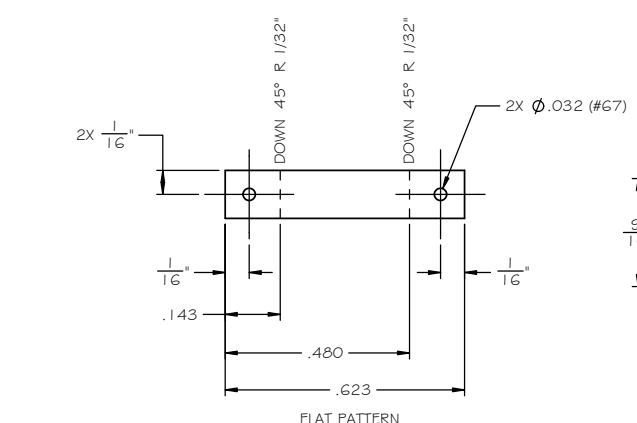
GR67-20 BRAKE RIGGING SUPPORT



GR69-42 ROOF WALK BRACE

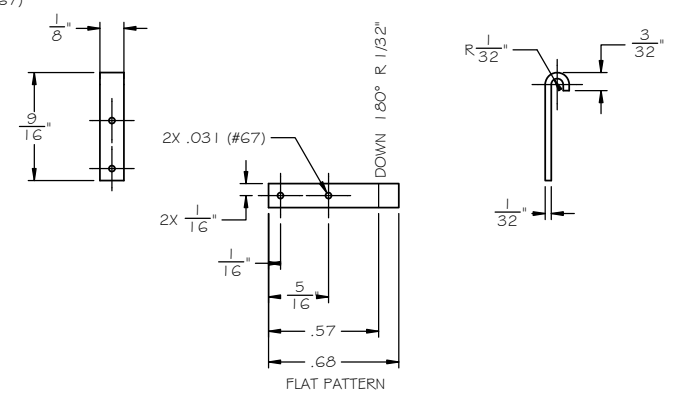


GR44-24 ROOF WALK SUPPORT

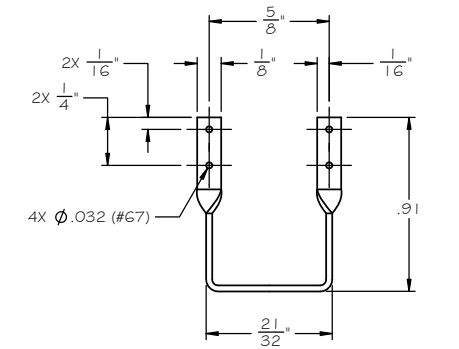


FLAT PATTERN

GR69-42 ROOF WALK BRACE



GR44-33 DOOR HANGER



GR57-50 STIRRUP STEP

TITLE			
SHORT STOCK CAR			
SIZE	CAGE CODE	DWG NO.	REV
D	-	GR Plan Set G9	-
SCALE	NONE	UNIT WT.	SHEET 7 OF 7