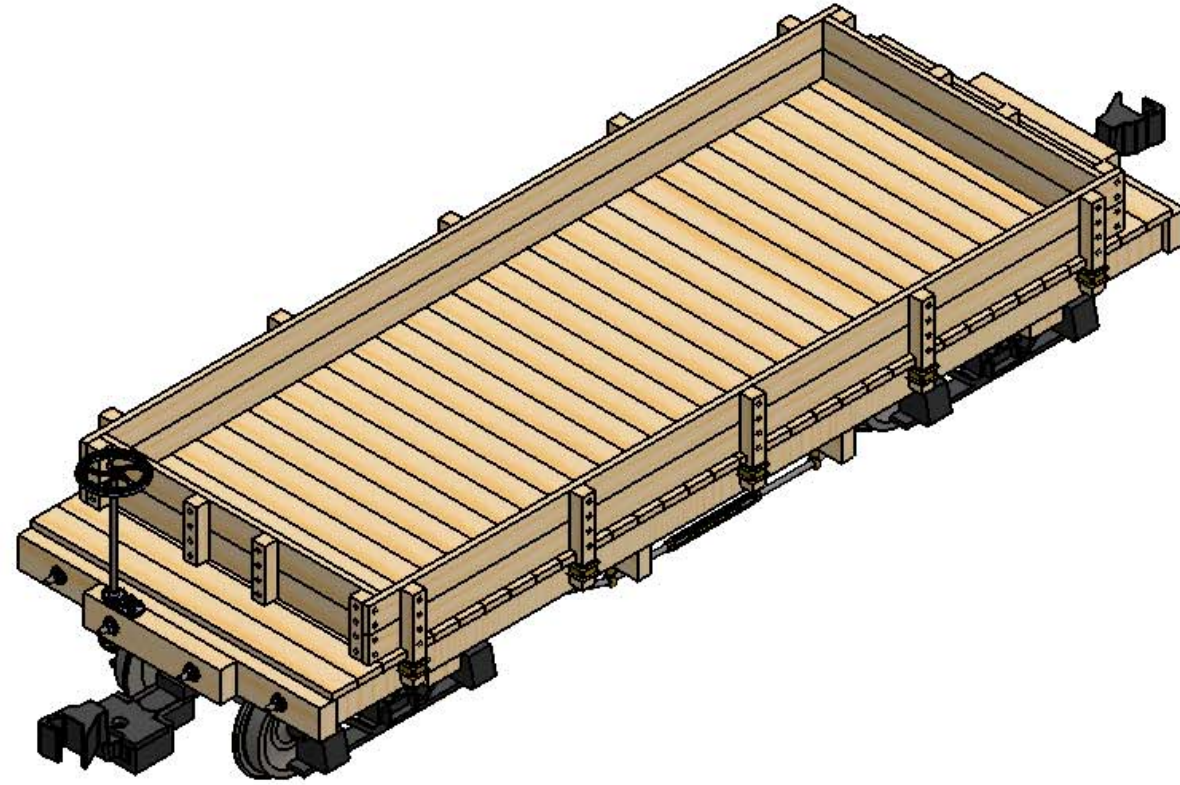
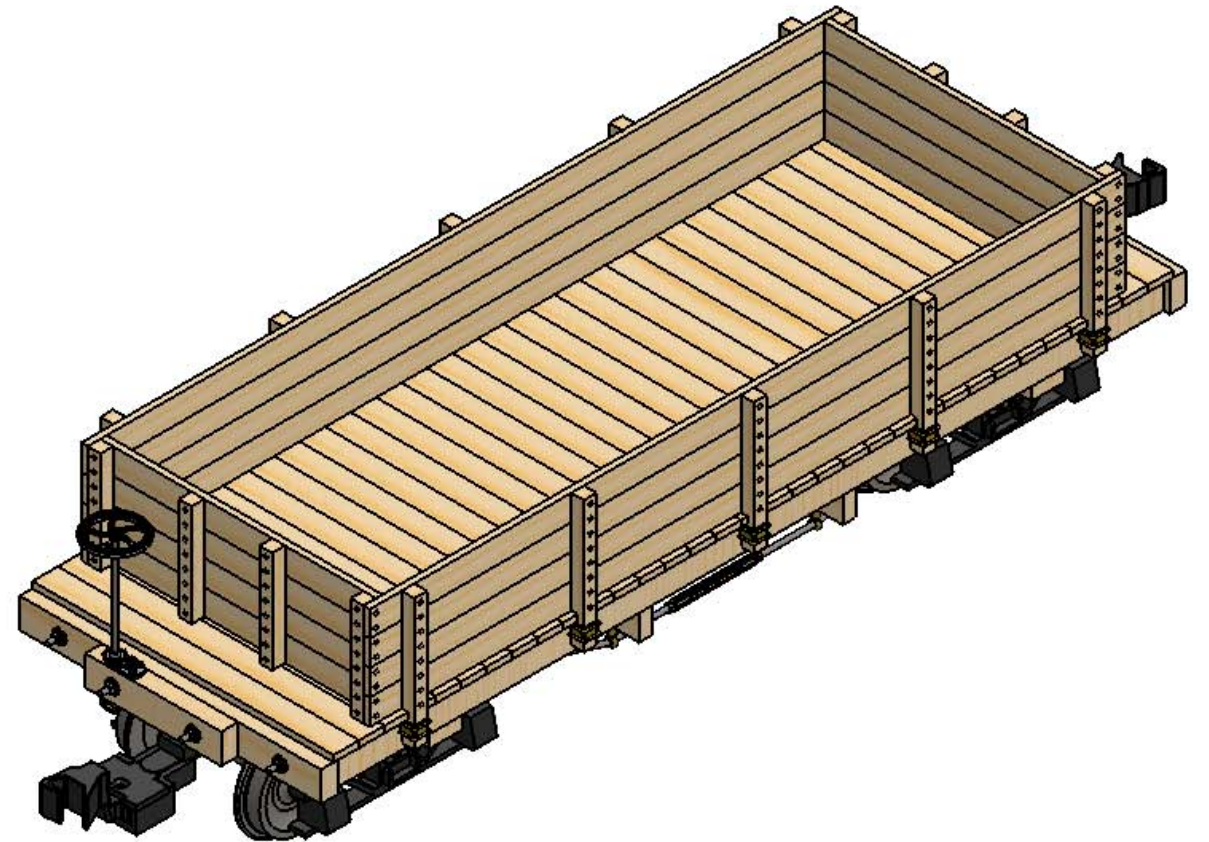


NOTES:

- 1. BELOW LISTED SUPPLIER(S) ARE THOSE I USED IN GENERATING THIS DRAWING PACKAGE. ALTERNATE SUPPLIERS MAY BE USED AT THE BUILDERS OPTION I HAVE NO AFFILIATION WITH ANY OF THE SUPPLIERS NOTED BELOW.
- 2. PART NUMBER LISTED IS FOR HOBBY LOBBY, 7600 A SW 44TH STREET, OKLAHOMA CITY, OK 73197 (800) 888-0321.
- 3. MANY OF THE ABOVE ITEMS MAY BE PURCHASED FROM YOUR LOCAL HOBBY SHOP OR YOUR PREFERRED ON LINE SUPPLIER.
- 4. ADDITIONAL ADHESIVES, PAINTS AND JEWELRY COMPONENTS MAY BE FOUND AT HOBBY LOBBY, MICHAELS, OR JO ANNED FABRICS.
- 5. LOCTITE 242 THREAD LOCKER MAY BE FOUND AT FASTENAL, INC. (www.fastenal.com)



1 LOW SIDE GONDOLA



2 HIGH SIDE GONDOLA

-	ORIGINAL ISSUE.		
ZONE	LTR	DESCRIPTION	DATE
REVISIONS			

CAD GENERATED DRAWING. CHANGES SHALL BE INCORPORATED BY THE CURRENT DESIGN ACTIVITY.

THIS DOCUMENT IS THE PROPERTY OF CITICO CREEK MODEL PRODUCTS AND MUST BE RETURNED ON DEMAND. THE INFORMATION HEREON MAY NOT BE USED OR DIVULGED WITHOUT THE EXPRESSED WRITTEN PERMISSION OF CITICO CREEK MODEL PRODUCTS.

INTERPRET DRAWING PER ASME Y14.100

UNLESS OTHERWISE SPECIFIED DIMENSIONS ARE IN INCHES

TOLERANCES
 ANGLES ± 0°30'
 FRACTIONS ± 1/32
 DECIMALS ± X .05, .XX .02, .XXX .010
 BROKEN EDGES 0.15 MAX.
 FILLETS .015 R MAX.
 PART SHALL BE FREE OF BURRS
 SURFACE ROUGHNESS 1.25 ✓

DO NOT SCALE THIS DRAWING

Citico Creek Model Products
 PO Box 223
 Lynn Haven, FL 32444

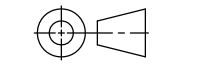
PROJECT	B.C.	2015-06-11
Drawn		
Engr/Dagn		
Checked		
Approved		

Citico Creek Model Products

TITLE
GONDOLA HIGH / LOW SIDE

10	9	8	7	6	5	4	3	2	1
REVISION SHEET									

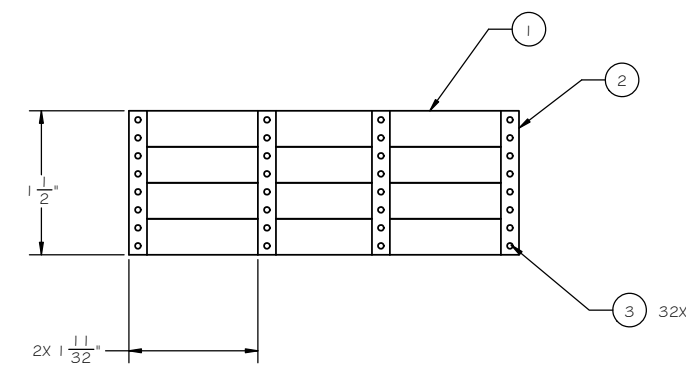
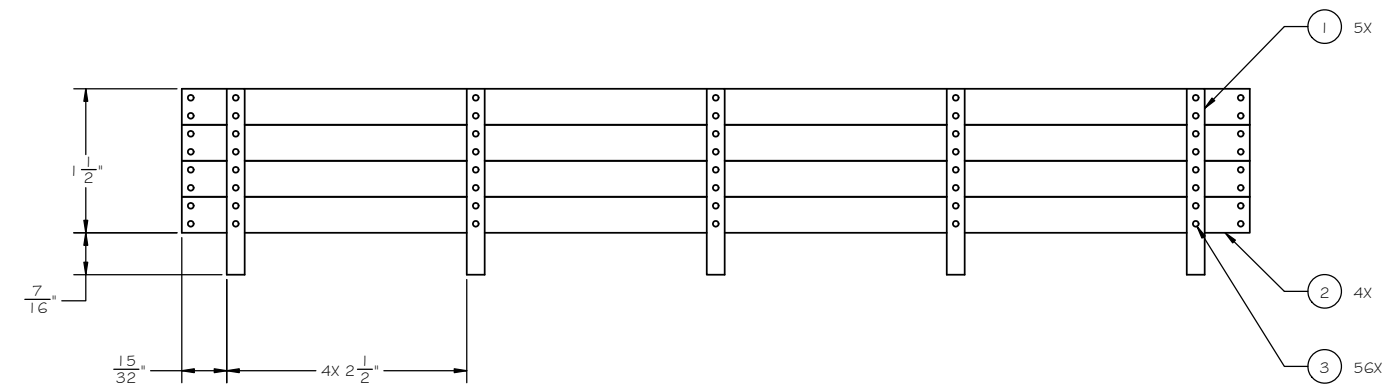
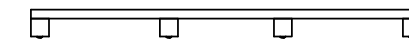
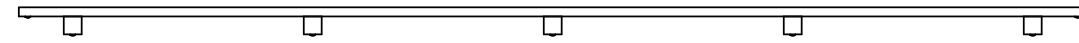
REV STATUS OF SHEETS	NEXT ASSY	USED ON
	APPLICATION	



SIZE	CAGE CODE	DWG NO.	REV
D	-	GR Plan Set G7HL	-
SCALE	NONE	UNIT WT.	SHEET 1 OF 3

FIND NO.	QTY.	CAGE CODE	ITEM IDENTIFICATION OR PART NO	NOMENCLATURE	MATERIAL	SPECIFICATION	NOTE	ZONE
1	1		GR67	FLAT CAR ASSEMBLY	BRASS			
2	8		GR67-33	SIDE BOARD	WOOD	3/32 X 3/8 X 11 1/8		
3	8		GR67-34	END BOARD	WOOD	3/32 X 3/8 X 4 1/16		
4	10		GR67-35	LONG SIDE POST	WOOD	3/16 X 3/16 X 1 15/16		
5	8		GR67-36	LONG END POST	WOOD	3/16 X 3/16 X 1 1/2		
6	176		GR67-39	CARRIAGE BOLT	STEEL	MAKE FROM 304865	2.	

HIGH SIDE GONDOLA

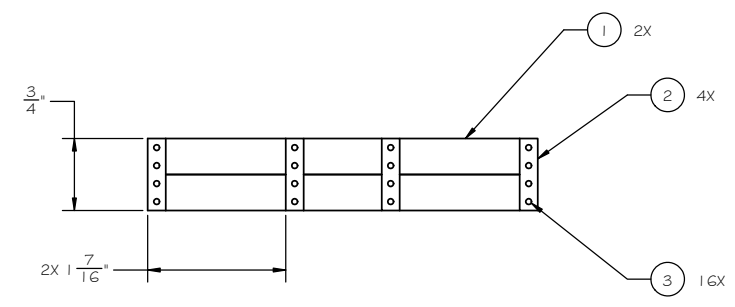
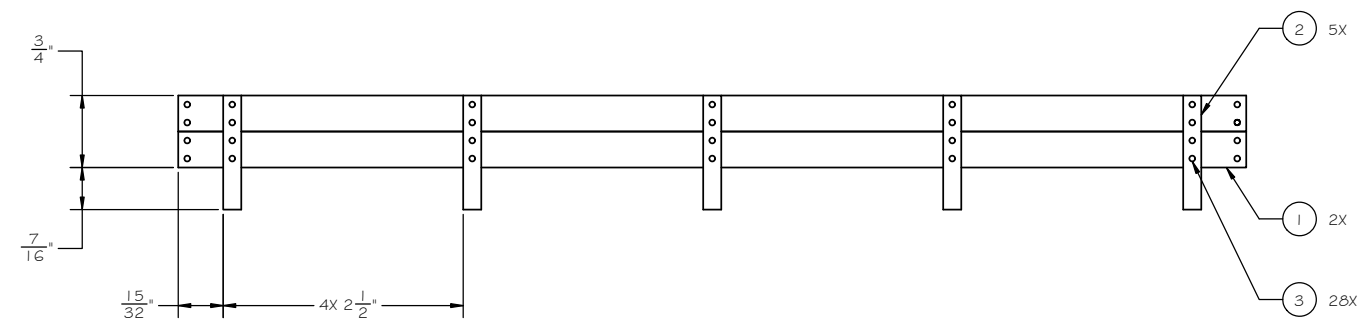
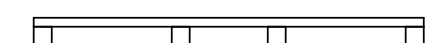
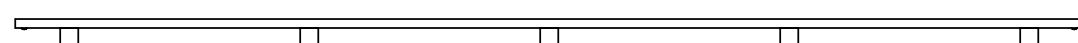


HIGH SIDE GONDOLA
SIDE BOARDS ASSEMBLY

HIGH SIDE GONDOLA
END BOARDS ASSEMBLY

FIND NO.	QTY.	CAGE CODE	ITEM IDENTIFICATION OR PART NO	NOMENCLATURE	MATERIAL	SPECIFICATION	NOTE	ZONE
1	1		GR67	FLAT CAR ASSEMBLY	BRASS			
2	4		GR67-33	SIDE BOARD	WOOD	3/32 X 3/8 X 11 1/8		
3	4		GR67-34	END BOARD	WOOD	3/32 X 3/8 X 4 1/16		
4	10		GR67-37	SHORT SIDE POST	WOOD	3/16 X 3/16 X 1 3/16		
5	8		GR67-38	SHORT END POST	WOOD	3/16 X 3/16 X 3/4		
6	88		GR67-39	CARRIAGE BOLT	STEEL	MAKE FROM 304865		

LOW SIDE GONDOLA

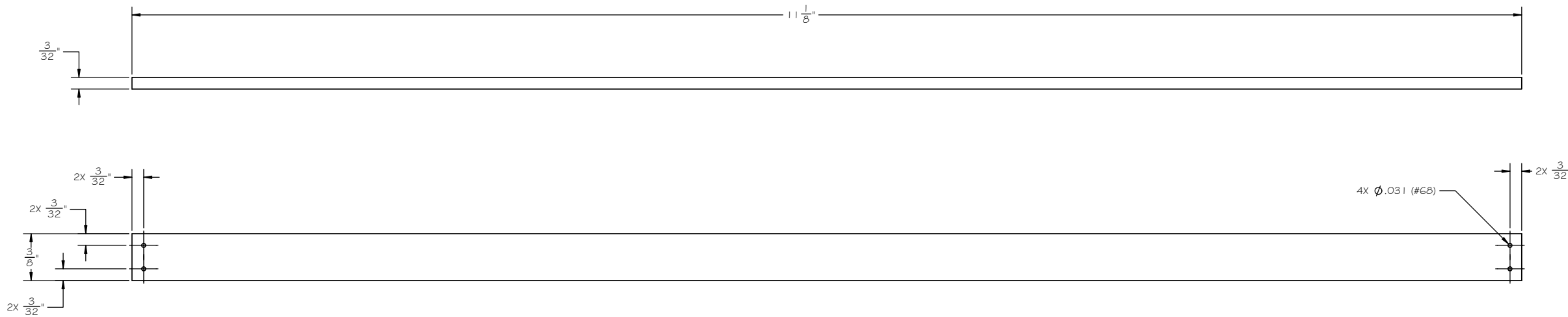


LOW SIDE GONDOLA
SIDE BOARDS ASSEMBLY

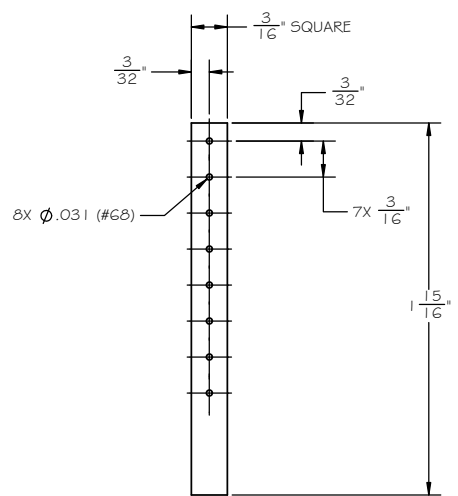
LOW SIDE GONDOLA
END BOARDS ASSEMBLY

TITLE			
GONDOLA HIGH / LOW SIDE			
SIZE	CAGE CODE	DWG NO.	REV
D	-	GR Plan Set G7HL	-
SCALE	NONE	UNIT WT.	SHEET 2 OF 3

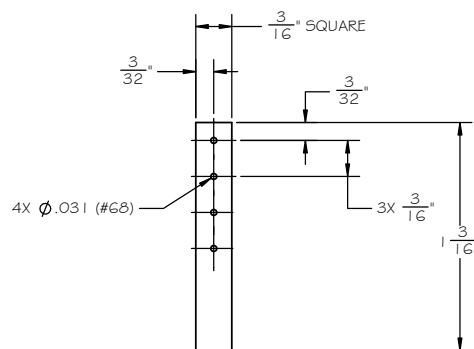
8 7 6 5 4 3 2 1



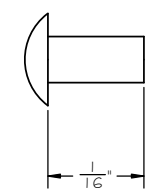
SIDE BOARD
SCALE: 2:1



LONG SIDE POST
SCALE: 2:1



SHORT SIDE POST
SCALE: 2:1



CARRIAGE BOLT
SCALE: 16:1

TITLE			
GONDOLA HIGH / LOW SIDE			
SIZE	CAGE CODE	DWG NO.	REV
D	-	GR Plan Set G7HL	-
SCALE	NONE	UNIT WT.	SHEET 3 OF 3

8 7 6 5 4 3 2 1