

8	7	6	5	4	3	2	1	
FIND NO.	QTY.	CAGE CODE	ITEM IDENTIFICATION OR PART NO	NOMENCLATURE	MATERIAL	SPECIFICATION	NOTE	ZONE
41	12		GRG3-41	CUPOLA SIDE WALL PLANK FILLER	WOOD	1/32 X 3/8 X 3/16		
42	12		GRG3-42	CUPOLA END WALL PLANK SHORT	WOOD	1/32 X 3/8 X 3/4		
43	6		GRG3-43	SIDE WALL PLANK FILLER	WOOD	1/32 X 3/8 X 3/16		
44	4		GRG3-44	CUPOLA WINDOW SIDE FILLER	WOOD	1/32 X 1/8 X 3/4		
45	1		GRG3-45	ROOF SHEET LARGE	PLYWOOD, 1/32	MAKE FROM		
46	1		GRG3-46	ROOF SHEET SMALL	PLYWOOD, 1/32	MAKE FROM		
47	1		GRG3-47	ROOF SHEET CUPOLA	PLYWOOD, 1/32	MAKE FROM		
48	2		GRG3-48	ROOF FACIA	WOOD	1/16 X 1/16		
49	2		GRG3-49	SIDE WALL FACIA	WOOD	1/32 X 1/4 X 10 17/32		
50	4		GRG3-50	END WALL FACIA	WOOD	1/32 X 7/16 X 4 3/16		
51	2		GRG3-51	CUPOLA SIDE FACIA	WOOD	1/32 X 13/64 X 3 7/8		
52	2		GRG3-52	SIDE WINDOW STOOL	WOOD	1/16 X 3/16 X 1 1/8		
53	2		GRG3-53	SIDE WINDOW HEAD	WOOD	1/16 X 3/16 X 1 1/8		
54	4		GRG3-54	SIDE WINDOW FRAME	WOOD	1/32 X 3/16 X 1 1/2		
55	4		GRG3-55	CUPOLA WINDOW STOOL	WOOD	1/16 X 3/16 X 1 1/8		
56	4		GRG3-56	CUPOLA WINDOW HEAD	WOOD	1/16 X 3/16 X 1 1/8		
57	8		GRG3-57	CUPOLA WINDOW FRAME	WOOD	1/32 X 3/16 X 5/8		
58	8		GRG3-58	WINDOW SASH RAIL	WOOD	1/16 X 1/16 X 1 1/16		
59	4		GRG3-59	LOWER SASH STILE	WOOD	1/16 X 1/16 X 1 1/16		
60	4		GRG3-60	SHORT UPPER SASH STILE	WOOD	1/16 X 1/16 X 5/8		
61	4		GRG3-61	CUPOLA END WINDOW STOOL	WOOD	1/16 X 3/16 X 1		
62	4		GRG3-62	CUPOLA END WINDOW HEAD	WOOD	1/16 X 3/16 X 1		
63	8		GRG3-63	CUPOLA END WINDOW FRAME	WOOD	1/32 X 3/16 X 5/8		
64	8		GRG3-64	CUPOLA SIDE WINDOW LONG RAIL	WOOD	1/16 X 16/16 X 19/32		
65	8		GRG3-65	CUPOLA SIDE WINDOW SHORT RAIL	WOOD	1/16 X 1/16 X 17/32		
66	16		GRG3-66	CUPOLA SIDE WINDOW STILE	WOOD	1/16 X 1/16 X 1/2		
67	4		GRG3-67	DOOR RAIL	WOOD	1/16 X 1/4 X 3 15/16		
68	6		GRG3-68	DOOR STILE	WOOD	1/16 X 1/4 X 5/8		
69	10		GRG3-69	LOWER DOOR PANEL	WOOD	1/32 X 1/8 X 1 3/4		
70	10		GRG3-70	UPPER DOOR PANEL	WOOD	1/32 X 1/8 X 1 7/16		
71	4		GRG3-71	CORNER TRIM LOWER	WOOD	1/16 X 1/16 X 4 7/16		
72	4		GRG3-72	CORNER TRIM CUPOLA	WOOD	1/16 X 1/16 X 1 1/2		
73	8		GRG3-73	ROOF WALK SUPPORT	WOOD	1/8 X 3/16 X 1		
74	3		GRG3-74	ROOF WALK PLANK LONG	WOOD	1/32 X 5/16 X 5 1/2		
75	3		GRG3-75	ROOF WALK PLANK SHORT	WOOD	1/32 X 5/16 X 1 3/4		
76	2		GRG3-76	LADDER ROOF BLOCK INNER	WOOD	1/8 X 1/4 CONTOUR TO ROOF		
77	2		GRG3-77	LADDER ROOF BLOCK OUTER	WOOD	1/8 X 1/4 CONTOUR TO ROOF		
78	2		GRG3-78	LADDER RAIL LEFT	BRASS BAR, 1/32 X 1/8	MAKE FROM F-1-4		
79	2		GRG3-79	LADDER RAIL RIGHT	BRASS BAR, 1/32 X 1/8	MAKE FROM F-1-4		
80	16		GRG3-80	LADDER RUNG	BRASS ROD, 1/16 DIA	MAKE FROM R-2		

8	7	6	5	4	3	2	1	
FIND NO.	QTY.	CAGE CODE	ITEM IDENTIFICATION OR PART NO	NOMENCLATURE	MATERIAL	SPECIFICATION	NOTE	ZONE
1	1		GRG3-01	CENTER SILL LEFT	WOOD	3/16 X 7/16 X 10 1/2		
2	1		GRG3-02	CENTER SILL RIGHT	WOOD	3/16 X 7/16 X 10 1/2		
3	2		GRG3-03	INTERMEDIATE SILL	WOOD	1/8 X 7/16 X 10 1/2		
4	2		GRG3-04	OUTSIDE SILL	WOOD	1/8 X 7/16 X 7 7/8		
5	2		GRG3-05	END BEAM	WOOD	5/16 X 1/2 X 4 1/4		
6	4		GRG3-06	OUTSIDE SILL CROSS BEAM	WOOD	1/8 X 7/16 X 7/16		
7	2		GRG3-07	BOLSTER	WOOD	1/8 X 1/2 X 4 1/4		
8	2		GRG3-08	KIN PIN PAD	WOOD	3/16 X 1/2 X 1		
9	15		GRG3-09	DECK PLANK FULL	WOOD	1/16 X 1/2 X 4 1/8		
10	2		GRG3-10	DECK PLANK NOTCHED	WOOD	1/16 X 1/2 X 4 1/8		
11	4		GRG3-11	DECK PLANK SHORT	WOOD	1/16 X 1/2 X 3		
12	2		GRG3-12	SIDE WALL SHOE	WOOD	1/8 X 3/16 X 7 7/8		
13	16		GRG3-13	CORNER POST	WOOD	1/8 X 3/16 X 3 3/4		
14	1		GRG3-14	SIDE WALL HEADER RIGHT	WOOD	1/8 X 1/4 X 7 7/8		
15	1		GRG3-15	SIDE WALL HEADER LEFT	WOOD	1/8 X 1/4 X 7 7/8		
16	4		GRG3-16	SIDE WALL DIAGONAL LONG	WOOD	1/8 X 3/16 X 4 7/16		
17	2		GRG3-17	SIDE WALL DIAGONAL SHORT	WOOD	1/8 X 3/16 X 4 1/16		
18	4		GRG3-18	END WALL SHOE	WOOD	1/8 X 3/16 X 1 3/8		
19	4		GRG3-19	END WALL DIAGONAL	WOOD	1/8 X 3/16 X 4		
20	4		GRG3-20	RAFTER A	WOOD	1/8 X 1/2 X 3 7/8		
21	1		GRG3-21	RAFTER B	WOOD	1/8 X 1/2 X 3 7/8		
22	1		GRG3-22	RIDGE BEAM	WOOD	1/4 X 1/4 X 3 3/4		
23	2		GRG3-23	SIDE WINDOW SHOE	WOOD	1/8 X 1/8 X 1 1/8		
24	4		GRG3-24	CUPOLA CORNER POST	WOOD	1/8 X 3/8 X 1 1/2		
25	1		GRG3-25	CUPOLA SIDE WALL HEADER RIGHT	WOOD	1/8 X 1/4 X 3 3/4		
26	1		GRG3-26	CUPOLA SIDE WALL HEADER LEFT	WOOD	1/8 X 1/4 X 3 3/4		
27	1		GRG3-27	RIDGE BEAM CUPOLA	WOOD	1/4 X 1/4 X 3 3/4		
28	2		GRG3-28	CUPOLA SIDE WALL SHOE	WOOD	1/8 X 1/8 X 3		
29	8		GRG3-29	CUPOLA SIDE WINDOW POST	WOOD	1/8 X 1/8 X 1 3/8		
30	4		GRG3-30	CUPOLA SIDE WINDOW SHOE	WOOD	1/8 X 1/8 X 1 1/8		
31	2		GRG3-31	CUPOLA END WALL SHOE	WOOD	1/8 X 1/8 X 3 7/8		
32	4		GRG3-32	CUPOLA END WINDOW SHOE	WOOD	1/8 X 1/8 X 1		
33	16		GRG3-33	END WALL PLANK	WOOD	1/32 X 3/8 X 4 1/8		
34	6		GRG3-34	END WALL PLANK FILLER	WOOD	1/32 X 3/8 X 7/16		
35	36		GRG3-35	SIDE WALL PLANK	WOOD	1/32 X 3/8 X 4 5/8		
36	6		GRG3-36	SIDE WALL WINDOW PLANK	WOOD	1/32 X 3/8 X 2 13/16		
37	10		GRG3-37	CUPOLA END WALL PLANK	WOOD	1/32 X 3/8 X 1 7/8		
38	12		GRG3-38	CUPOLA END WALL PLANK FILLER	WOOD	1/32 X 3/8 X 1/4		
39	12		GRG3-39	CUPOLA SIDE WALL PLANK SHORT	WOOD	1/32 X 3/8 X 13/16		
40	8		GRG3-40	CUPOLA SIDE WALL PLANK	WOOD	1/32 X 3/8 X 1 3/4		

NOTES:  
FOR NOTES AND ASSEMBLY INSTRUCTIONS SEE SHEET 2.

THIS DRAWING PACKAGE IS AN ENHANCEMENT TO THE DRAWINGS PUBLISHED IN GARDEN RAILWAYS MAGAZINE ORIGINALLY DRAWN AND PROVIDED BY TED STINSON.

- ORIGINAL ISSUE.		DATE	APPROVED
ZONE	LTR	DESCRIPTION	REVISIONS
<b>Citico Creek Model Products</b>			
PROJECT: SHORT CABOOSE		TITLE: SHORT CABOOSE	
Drawn	B.C.	2015-10-28	
Checked			
Approved			
SIZE: D	CAGE CODE: -	DWG NO.: GR Plan Set G3	REV: -
SCALE: NONE	UNIT WT.	SHEET: 1	OF: 9

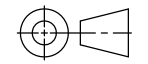
CAD GENERATED DRAWING. CHANGES SHALL BE INCORPORATED BY THE CURRENT DESIGN ACTIVITY.

THIS DOCUMENT IS THE PROPERTY OF CITICO CREEK MODEL PRODUCTS AND MUST BE RETURNED ON DEMAND. THE INFORMATION HEREON MAY NOT BE USED OR DIVULGED WITHOUT THE EXPRESSED WRITTEN PERMISSION OF CITICO CREEK MODEL PRODUCTS.

INTERPRET DRAWING PER ASME Y14.1-100  
UNLESS OTHERWISE SPECIFIED DIMENSIONS ARE IN INCHES  
TOLERANCES  
ANGLES ± 0°30'  
FRACTIONS ± 1/32  
DECIMALS ± X.05, .XX, .02, .XXX, .010  
BROKEN EDGES 0.15 MAX.  
FILLETS .015 R MAX.  
PART SHALL BE FREE OF BURRS  
SURFACE ROUGHNESS 125 ✓

DO NOT SCALE THIS DRAWING

THIRD ANGLE PROJECTION



10	9	8	7	6	5	4	3	2	1	- REVISION	1
SHEET											

REV STATUS OF SHEETS

NEXT ASSY:      USED ON:      APPLICATION:

NOTES:

1. BELOW LISTED SUPPLIERS ARE THOSE USED IN THE DEVELOPMENT OF THIS DRAWING PACKAGE. ALTERNATE SUPPLIERS MAY BE USED AT THE BUILDERS OPTION. I HAVE NO AFFILIATION WITH ANY OF THE SUPPLIERS NOTED BELOW.
  2. PART NUMBER LISTED IS FOR MCMASTER-CARR SUPPLY COMPANY, 6100 SULTON INDUSTRIAL BLVD., ATLANTA, GA 30336 (404) 346-7000.
  3. PART NUMBER LISTED IS FOR BACHMANN INDUSTRIES, 1400 EAST ERIE AVENUE, PHILADELPHIA, PA 19142 (215) 533-1600.
  4. PART NUMBER LISTED IS FOR USA TRAINS, PO BOX 100, MALDON, MA 02148 (781) 322-6084.
  5. PART NUMBER LISTED IS FOR PLASTRUCT, INC., 1020 SOUTH WALACE PLACE, CITY OF INDUSTRY, CA 91748 (636) 912-7016 OR (800) 666-7015.
  6. PART NUMBER LISTED IS FOR KADEE QUALITY PRODUCTS, 673 AVENUE C, WHITE CITY, OR 97503 (541) 826-3883.
  7. PART NUMBER LISTED IS FOR OZARK MINIATURES, INC., 3461 S 5225W, CEDAR CITY, UT 84720 (435)586-1036.
  8. PART NUMBER LISTED IS FOR SPECIAL SHAPES, 6911 W 59th STREET, CHICAGO, IL 60638 (773) 586-8517.
  9. PART NUMBER LISTED IS FOR HOBBY LOBBY, 7600 A SW 44th STREET, OKALAHOMA CITY, OK 73173 (800) 888-0321
  10. ITEM MAY BE PURCHASED FROM FASTENAL INC, PART NUMBER 31161807 AND USED AS IS, OR PURCHASED FROM MCMASTER CARR SUPPLY, PART NUMBER 92916A355, AND WILL NEED TO BE DRILLED OUT TO .250 ID TO MATCH TUBING USED FOR SMOKE STACK.
11. MANY OF THE ABOVE ITEMS MAY BE PURCHASED FROM YOUR LOCAL HOBBY SHOP OR YOUR PREFERRED ONLINE SUPPLIER.
  12. ADDITIONAL ADHESIVES, PAINTS, DECALS, ETC., MAY BE FOUND AT HOBBY LOBBY, MICHAELS OR JOANNES FABRICS.
  13. LOCTITE 242 THREAD LOCKER MAY BE FOUND AT FASTENAL ([www.fastenal.com](http://www.fastenal.com))

SUGGESTED ASSEMBLY INSTRUCTIONS

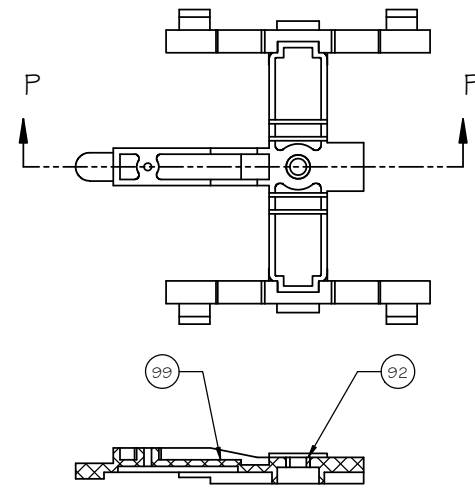
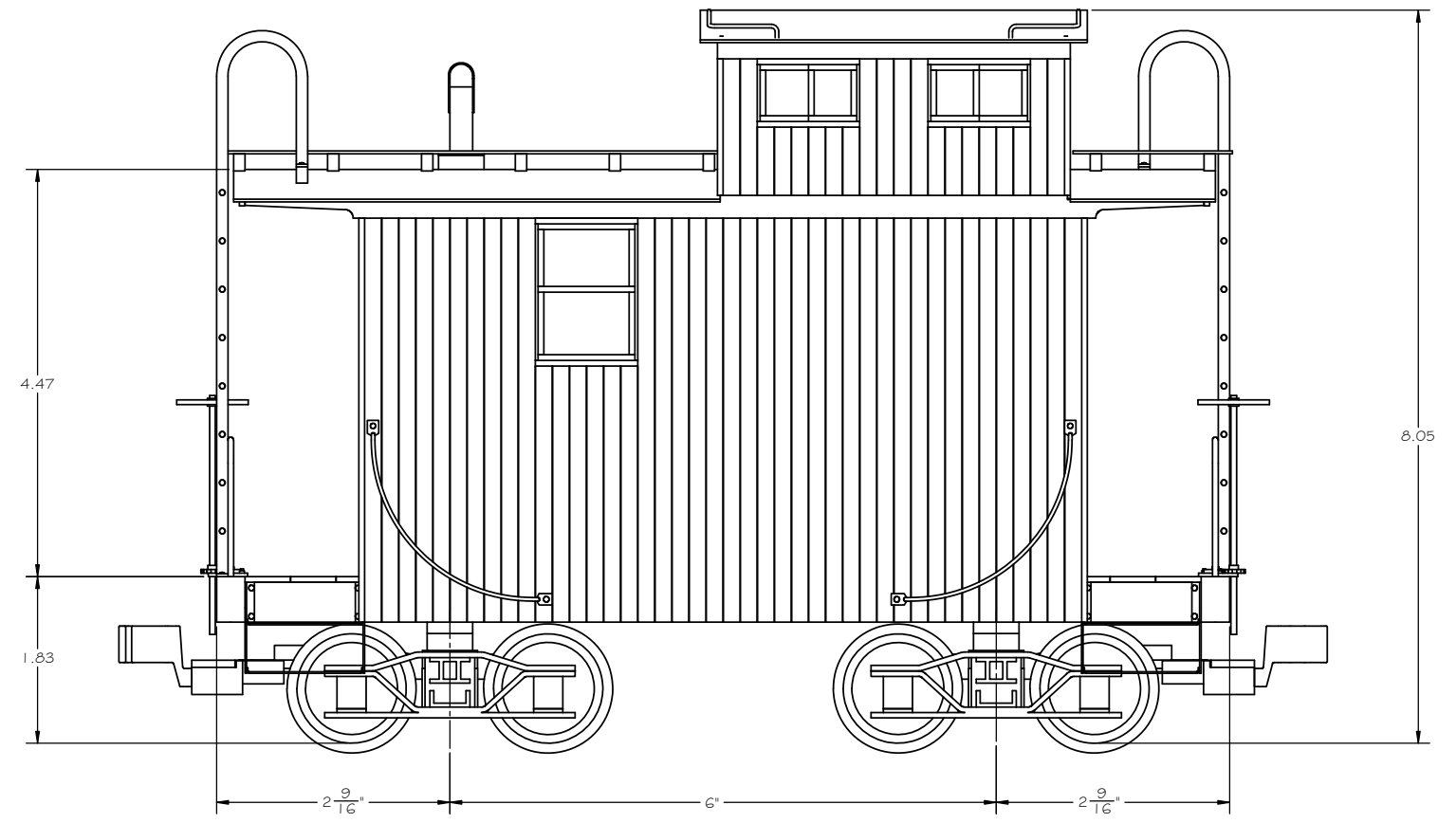
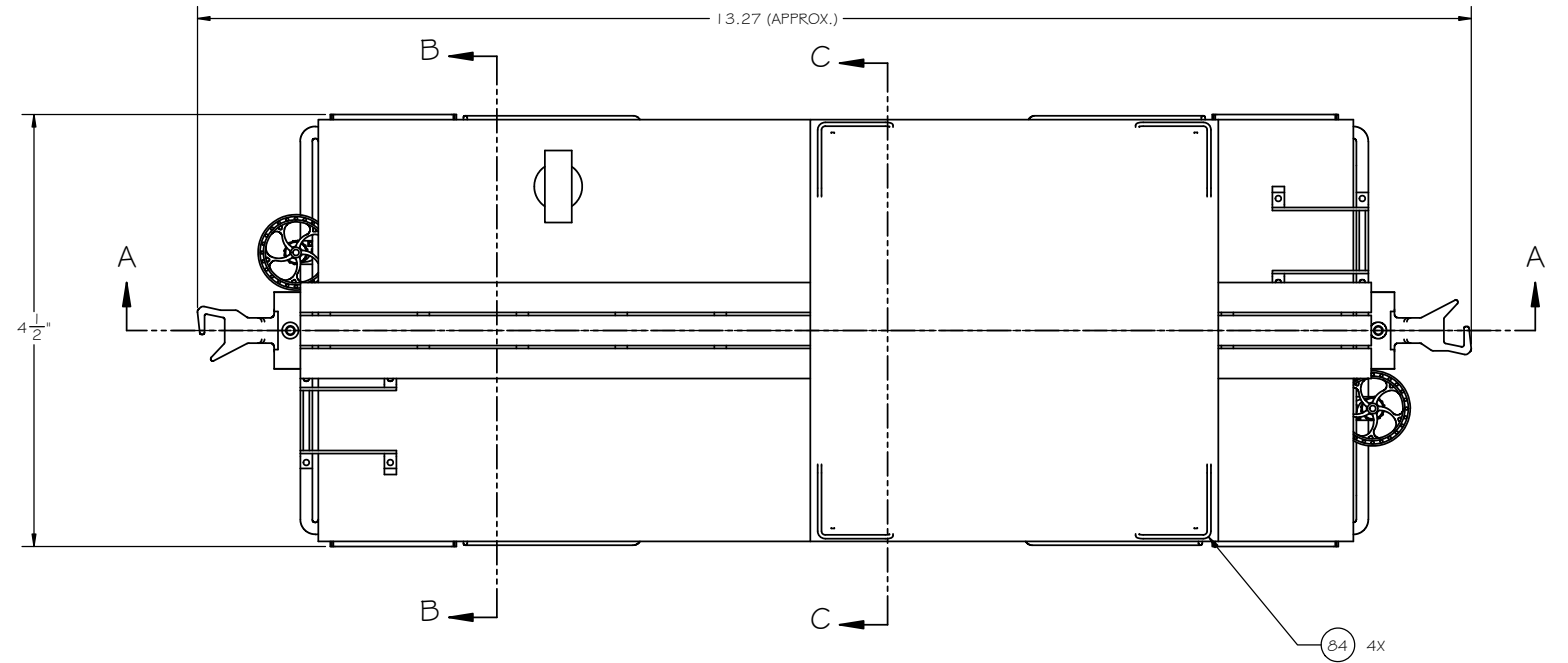
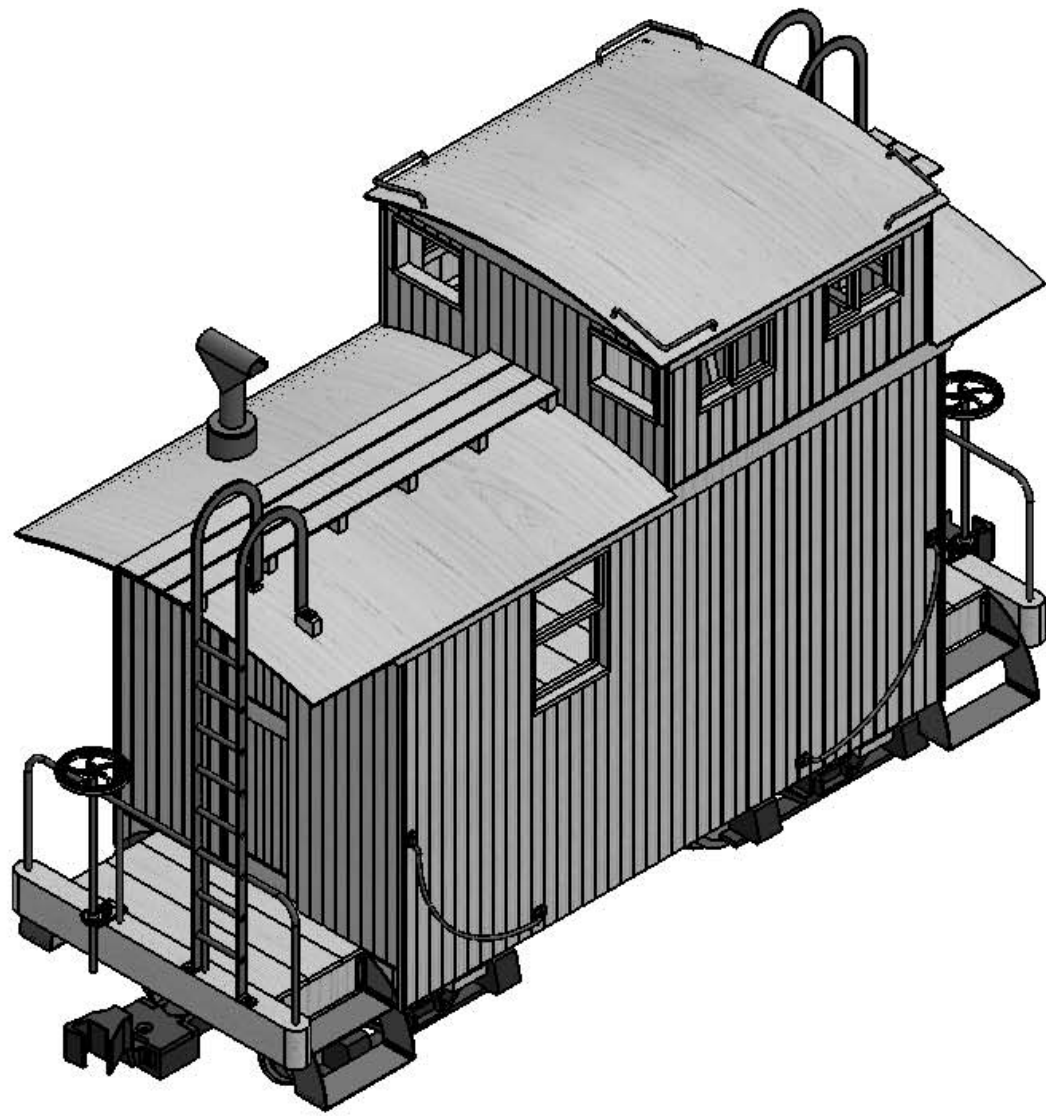
1. ASSEMBLE MAIN FRAME COMPONENTS FIND NUMBERS 1 (CENTER SILL, LEFT), 2 (CENTER SILL, RIGHT), 3 (INTERMEDIATE SILL), 4 (OUTSIDE SILL), 5 (END BEAM), AND 6 (OUTSIDE SILL CROSS BEAM) USING A GOOD QUALITY WOOD GLUE. INSTALL FIND NUMBER 9 (DECK PLANK FULL), 10 (DECK PLANK NOTCHED), AND 11 (DECK PLANK SHORT) CENTERING ON THE LENGTH OF THE FRAME
2. ASSEMBLE FIND NUMBERS 7 (BOLSTER) AND 8 (KING PIN BLOCK) SEPARATELY. AFTER GLUE HAS COMPLETELY DRIED, DRILL 1/4" HOLE AS SHOWN. INSTALL FIND NUMBER 95 (TAPPING INSERT FOR WOOD) IN 1/4" HOLE WITH SCREW DRIVER SLOT LOCATED ON FIND NUMBER 7 SIDE OF ASSEMBLY. COATING THE HOLE WITH THICK CA PRIOR TO INSTALLING THE TAPPING INSERT WILL SECURE IT IN PLACE PERMANENTLY. LOCATE AND INSTALL BOLSTER ASSEMBLY ON FRAME.
3. MAKE SUB ASSEMBLIES OF THE SIDE WALLS CONSISTING OF FIND NUMBERS 12 (SIDE WALL SHOE), 13 (CORNER POST), 14 (SIDE WALL HEADER RIGHT), 15 (SIDE WALL HEADER LEFT), 16 (SIDE WALL DIAGONAL LONG), 17 (SIDE WALL DIAGONAL SHORT), AND 23 (SIDE WINDOW SHOE). NOTE THAT THE SIDE WALLS ARE MIRROR IMAGES OF EACH OTHER AND CARE MUSTBE TAKEN TO ASSEMBLE THE CORRECT SIDE WALL HEADER IN EACH ASSEMBLY.
4. ASSEMBLE SIDING, FIND NUMBERS 36 (SIDE WALL PLANK), AND 36 (SIDE WALL WINDOW PLANK), TO SIDE WALL FRAME SUB ASSEMBLIES, HOLDING THE BOTTOM EDGE OF THE SIDING 7/16" BELOW THE BOTTOM OF THE SIDE WALL SHOE. ASSEMBLE SIDE WINDOWS CONSISTING OF FIND NUMBERS 52 (SIDE WINDOW STOOL), 53 (SIDE WINDOW HEAD), 54 (SIDE WINDOW FRAME), 58 (WINDOW SASH RAIL), 59 (LOWER SASH STILE), AND 60 (UPPER SASH STILE).
5. MAKE SUB ASSEMBLIES OF THE END WALLS CONSISTING OF FIND NUMBERS 13 (CORNER POST), 18 (END WALL SHOE), 19 (END WALL DIAGONAL), 20 (RAFTER A), AND 21 (RAFTER B). NOTE THAT RAFTER B IS LOCATED ON THE CUPOLA END OF THE CABOOSE.
6. INSTALL FIND NUMBER 33 (END WALL PLANK), 34 (END WALL PLANK FILLER), 67 (DOOR RAIL), 68 (DOOR STILE), 69 (LOWER DOOR PANEL), AND 70 (UPPER DOOR PANEL).
- 7.
8. ASSEMBLE SIDE WALL SUB ASSEMBLIES AND END WALL SUB ASSEMBLIES TO THE FRAME SUB ASSEMBLY. AT THIS POINT, THE CABOOSE COULD BE MADE TO BE DETAILED ON THE INTERIOR BY ASSEMBLING THE SIDE AND END WALLS PERMANENTLY AND SECURING THE WALLS TO THE FRAME USING SMALL WOOD SCREWS.
9. MAKE A SUB ASSEMBLY OF THE CUPOLA FRAMING CONSISTING OF FIND NUMBERS 20 (RAFTER A), 24 (CUPOLA CORNER POST), 25 (CUPOLA SIDE WALL HEADER RIGHT), 26 (CUPOLA SIDE WALL HEADER LEFT), 27 (RIDGE BEAM CUPOLA), 28 (CUPOLA SIDE WALL SHOE), 29 (CUPOLA SIDE WINDOW POST), 30 (CUPOLA SIDE WINDOW SHOE), 31 (CUPOLA END WALL SHOE), AND 32 CUPOLA END WINDOW SHOE). CUPOLA FRAMING SHOULD SIT ON TOP OF THE SIDE WALL HEADER BEAMS AND BE FLUSH WITH THE OUTSIDE FACE OF THE HEADER BEAMS. NOTE THAT THE CUPOLA CAN BE MADE REMOVABLE.
10. ASSEMBLE CUPOLA SIDING, FIND NUMBERS 37 (CUPOLA END WALL PLANK), 38 (CUPOLA END WALL PLANK FILLER), 39 (CUPOLA SIDE WALL PLANK SHORT), 40 (CUPOLA SIDE WALL PLANK), 41 (CUPOLA SIDE WALL PLANK FILLER), 42 (CUPOLA END WALL PLANK SHORT), 43 (SIDE WALL PLANK FILLER), AND 44 (CUPOLA WINDOW SIDE FILLER).
11. ASSEMBLE FIND NUMBERS 55 (CUPOLA WINDOW STOOL), 56 (CUPOLA WINDOW HEAD), 67 (CUPOLA WINDOW FRAME), 61 (CUPOLA END WINDOW STOOL), 62 (CUPOLA END WINDOW HEAD), 63 (CUPOLA END WINDOW FRAME), 64 (CUPOLA SIDE WINDOW LOING RAIL), 65 (CUPOLA SIDE WINDOW SHORT RIAL), AND 66 (CUPOLA SID WINDOW STILE).

SUGGESTED ASSEMBLY INSTRUCTIONS CONT'D

12. PLACE CUPOLA SUB ASSEMBLY IN POSITION AS SHOWN ON THE DRAWING AND ASSEMBLE FIND NUMBER 20 (RAFTER A) IN MIDDLE LOCATION AND FIND NUMBER 22 (RIDGE BEAM). DO NOT GLUE CUPOLA SUB ASSEMBLY IF INTERIOR IS DESIRED.
13. ASSEMBLE FIND NUMBERS 45 (ROOF SHEET LARGE), AND 46 (ROOF SHEET SMALL) TO CAR BODY. ASSEMBLE FIND NUMBER 47 (ROOF SHEET CUPOLA) TO THE CUPOLA SUB ASSEMBLY.
14. ASSEMBLE FIND NUMBER 48 (ROOF FACIA) ON OUTWARD ENDS OF ROOF OVERHANG. ASSEMBLE FIND NUMBER 48 (SIDE WALL FACIA) ON EACH SIDE OF THE CAR BODY, BEING CAREFUL TO NOT GLUE THE CUPOLA TO THE CAR BODY, IF INTERIOR IS DESIRED. ASSEMBLE FIND NUMBER 50 (END WALL FACIA) AND 51 (CUPOLA SIDE FACIA).
15. ASSEMBLE FIND NUMBERS 71 (CORNER TRIM LOWER) AND 72 (CORNER TRIM CUPOLA), FITTING ENDS TO INSTALLED CONDITIONS. ASSEMBLE FIND NUMBERS 73 (ROOF WALK SUPPORT), 74 (ROOF WALK PLANK LONG), 75 (ROOF WALK PLANK SHORT).
16. ASSEMBLE TWO LADDER SUB ASSEMBLIES SOLDERING FIND NUMBERS 78 (LADDER RAIL LEFT), 79 (LADDER RAIL RIGHT), AND 80 (LADDER RUNG). LOCATE LADDERS ON END BEAM AND PIN WITH FIND NUMBER 93 (CARRIAGE BOLT). FIT FIND NUMBERS 76 (LADDER ROOF BLOCK INNER) AND 77 (LADDER ROOF BLOCK OUTER) TO UPPER LADDER CONNECTION AND ROOF CURVATURE. GLUE BLOCKS TO ROOF SHEET AND PIN LADDER TO BLOCKS WITH CARRIAGE BOLT.
17. ASSEMBLE FIND NUMBERS 81 (END RAILING) AND 82 (END RAIL POST) TO END BEAM. SOLDER POST TO RAILING TO COMPLETE ASSEMBLY.
18. LOCATE FIND NUMBER 84 (CUPOLA ROOF GRAB IRON) AND INSTALL ON ROOF SHEET AND FIND NUMBER 85 (BODY GRAB IRON) AND INSTALL ON CAR BODY SIDE.
19. ASSEMBLE FIND NUMBERS 86 (SMOKE JACK BASE), 87 (SMOKE STACK), 94 (SMOKE JACK CAP) AND 91 (SMOKE STACK CAP), SOLDERING INTO A SINGE SUB ASSEMBLY. FIT SMOKE JACK BASE TO ROOF CURVATURE AND ASSEMBLE WITH EPOXY.
20. ASSEMBLE FIND NUMBERS 88 (STEP SIDE LEFT), 89 (STEP SIDE RIGHT) AND 90 (STEP BOTTOM), SOLERING INTO FOR STEP SUB ASSEMBLIES. ASSEMBLE TO INTERMEDIATE SILL USING FIND NUMBER 93 (CARRIAGE BOLT) AND EPOXY.
21. ASSEMBLE FIND NUMBERS 97 (PAWL AND RATCHET), 98 (BRAKE WHEEL) AND 83 (BRAKE WHEEL STAFF, LOCATED AS SHOWN ON DRAWING.
22. FIND NUMBER 99 (ARCH BAR TRUCK), DRILL KING PIN HOLE OUT TO 1/4" (.250) DIAMETER. CUT FIND NUMBER 92 (BUSHING) FROM TB8 TUBE APPROXIMATELY 1/4" LONG. INSTALL BUSHING IN KING PIN HOLE IN TRUCK BOLSTER MAKING IT FLUSH ON THE BOTTOM OF THE BOLSTER. SECURE USING ACC OR SOLVENT, AND ALLOW TO SET OVERNIGHT. ONCE SET, FILE BUSHING FLUSH WITH THE TOP OF BOLSTER. DRILL BUSHING OUT TO 0.172 (1 1/64") DIAMETER.
23. ASSEMBLE FIND NUMBER 100 (WHEEL SET) INTO FIND NUMBER 99 USING FIND NUMBER 96 (WASHER, FLAT) TO CENTER AXLES IN THE TRUCK SIDE FRAMES. THESE WASHERS MAY VARY IN THICKNESS, USE IN MULTIPLES OF 2 ON EACH AXLE. WHEEL SET SHOULD SPIN FREELY AFTER INSTALLATION. INSTALL ASSEMBLED TRUCK ON TO CAR BODY USING FIND NUMBER 102 (FLAT WASHER) AND FIND NUMBER 103 (MACHINE SCREW)
24. ASSEMBLE FIND NUMBER 101 (COUPLER, LARGE OFFSET) TO FIND NUMBER 99 (ARCH BAR TRUCK) USING FASTENERS SUPPLIED.

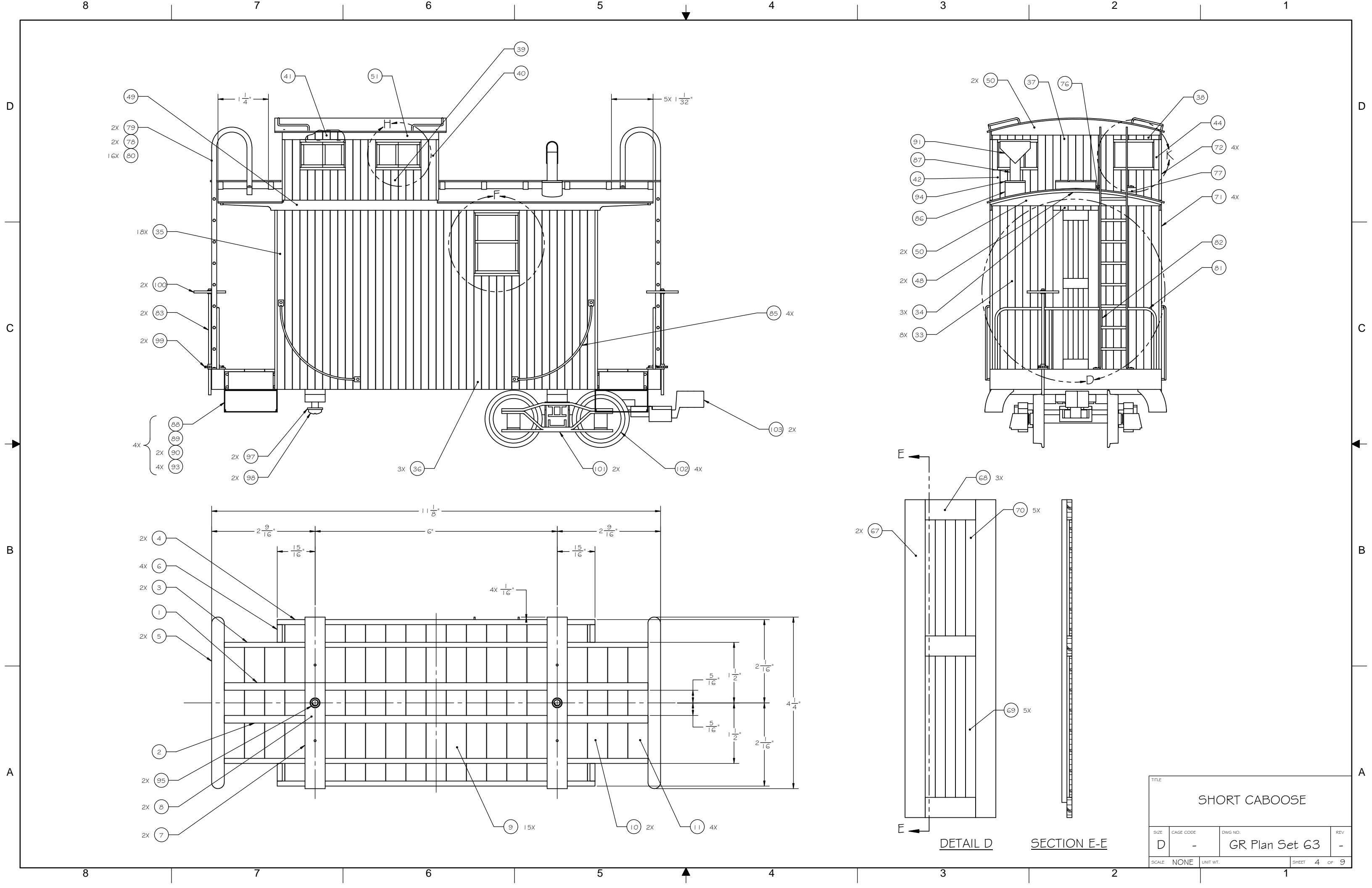
FIND NO.	QTY.	CAGE CODE	ITEM IDENTIFICATION OR PART NO	NOMENCLATURE	MATERIAL	SPECIFICATION	NOTE	ZONE
81	2		GR63-81	END RAILING	BRASS ROD 1/16 DIA	MAKE FROM R-2	△.6	
82	4		GR63-82	END RAIL POST	BRASS ROD, 1/16 DIA	MAKE FROM R-2	△.6	
83	2		GR63-83	BRAKE WHEEL STAFF	BRASS ROD, 1/16 DIA	MAKE FROM R-2	△.6	
84	4		GR63-84	CUPOLA ROOF GRAB IRON	BRASS ROD, .040 DIA	MAKE FROM R-40	△.6	
85	4		GR63-85	BODY GRAB IRON	BRASS	MAKE FROM ROUND R-40 & FLAT F-1-4	△.6	
86	1		GR63-86	SMOKE JACK BASE	COPPER PIPE, 3/8 NOM.	MAKE FROM GRADE M COPPER PIPE	.500 OD X .025 WALL	
87	1		GR63-87	SMOKE STACK	BRASS TUBE, .250 OD X .029 WALL X 3/4 LG	MAKE FROM TT-88	△.6	
88	4		GR63-88	STEP SIDE LEFT	BRASS SHEET .016 THK	MAKE FROM 16404	△.6	
89	4		GR63-89	STEP SIDE RIGHT	BRASS SHEET .016 THK	MAKE FROM 16404	△.6	
90	8		GR63-90	STEP, BOTTOM	BRASS SHEET, .016 THK	MAKE FROM 16404	△.6	
91	1		GR62-61	SMOKE STACK CAP	BRASS, BAR, 1/64 X 3/4 X 1.230	MAKE FROM F-1X-24	△.6	
92	2		GR67-29	BUSHING	BUTYRATE TUBE	MAKE FROM TB8 (1/4" OD X 1/8" ID)	△.6	
93	32		GR67-39	CARRIAGE BOLT	STEEL	MAKE FROM 304865	△.6	
94	1			SMOKE JACK CAP	BRASS WASHER	.258 ID X .500 OD X .040 THK	△.6	
95	2		90016A009	TAPPING INSERT FOR WOOD	BRASS No 8-32 UNC		△.2	
96	8		91545A420	WASHER, FLAT	NYLON	3.2mm ID X 7mm OD X .5mm THK	△.2	
97	2		92916A335	WASHER, FLAT	BRASS	0.172" ID X 0.375" OD X 0.031" THK	△.2	
98	2		94070A194	SCREW, MACHINE, PAN HEAD	BRASS, No 8-32 UNC x 1/2" LG		△.2	
99	2		1018	PAWL AND RATCHET	CASTING		△.7	
100	2		1018	BRAKE WHEEL	CASTING		△.7	
101	2		R2032	ARCH BAR TRUCK	PLASTIC		△.4	
102	4		92421	WHEEL SET	STEEL, 31.0mm DIAMETER		△.5	
103	2		1831	COUPLER, LARGE OFFSET	PLASTIC		△.6	

TITLE			
SHORT CABOOSE			
SIZE	CAGE CODE	DWG NO.	REV
D	-	GR Plan Set 63	-
SCALE	NONE	UNIT WT.	SHEET 2 OF 9

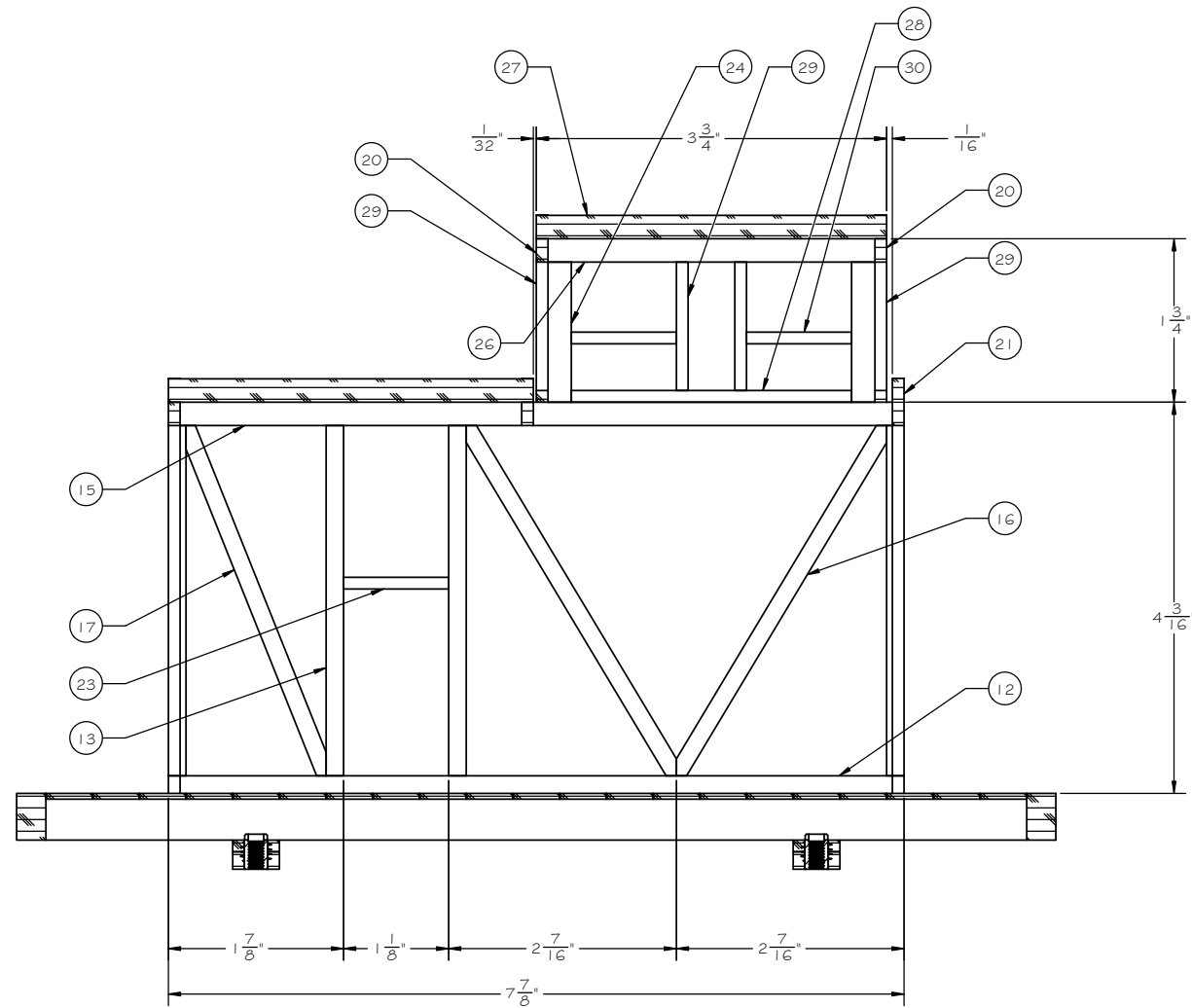


SECTION P-P

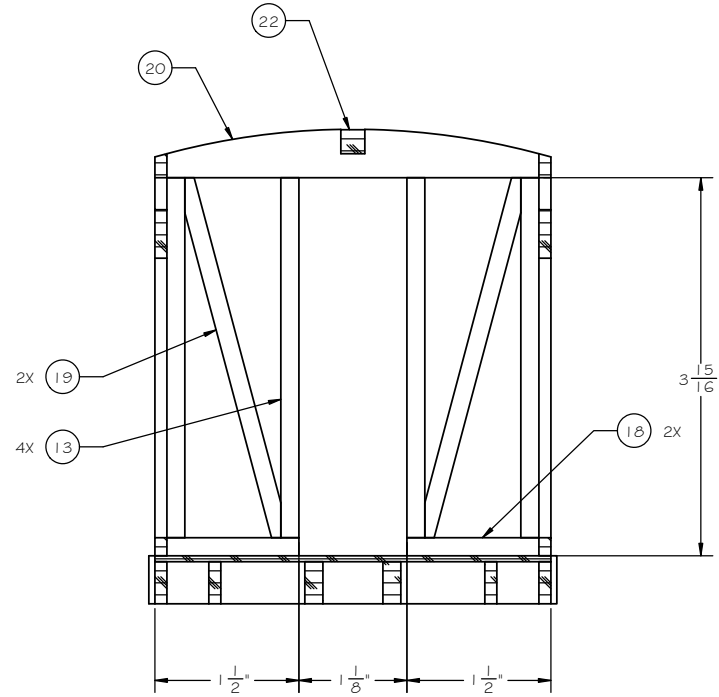
TITLE			
SHORT CABOOSE			
SIZE	CAGE CODE	DWG NO.	REV
D	-	GR Plan Set G3	-
SCALE	NONE	UNIT WT.	SHEET 3 OF 9



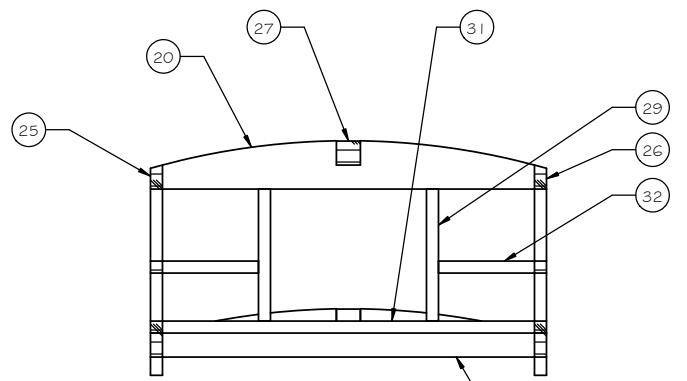
TITLE			
SHORT CABOOSE			
SIZE	CAGE CODE	DWG NO.	REV
D	-	GR Plan Set G3	-
SCALE	NONE	UNIT WT.	SHEET 4 OF 9



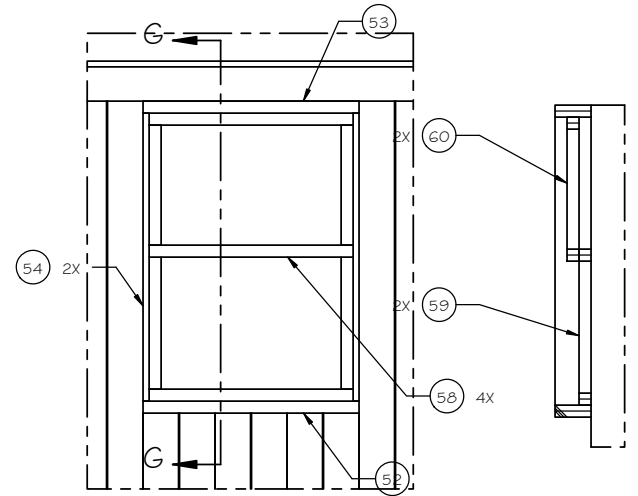
SECTION A-A  
SIDE WALL FRAMING ARRANGEMENT



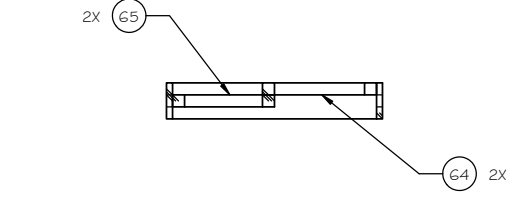
SECTION B-B  
END WALL FRAMING ARRANGEMENT



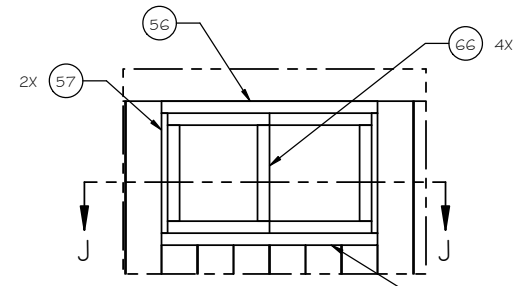
SECTION C-C  
CUPOLA END WALL FRAMING ARRANGEMENT



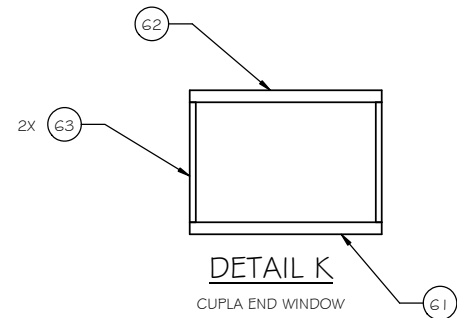
DETAIL F  
SIDE WINDOW



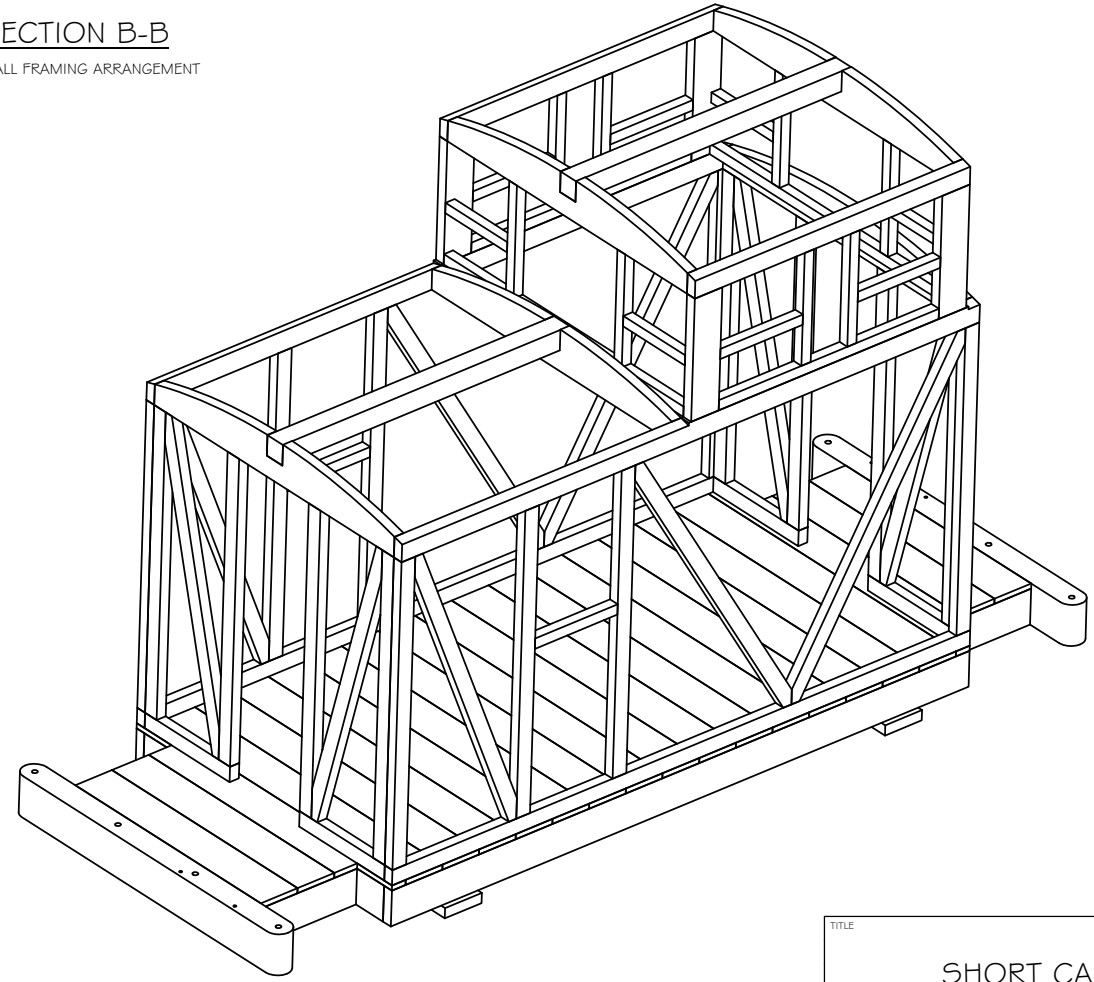
SECTION J-J



DETAIL H  
CUPOLA SIDE WINDOW

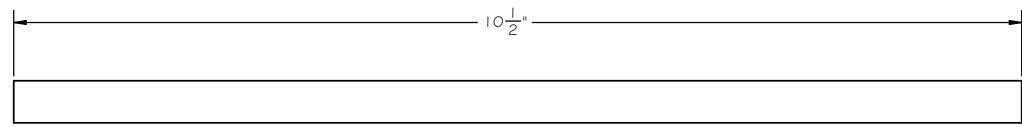


DETAIL K  
CUPOLA END WINDOW

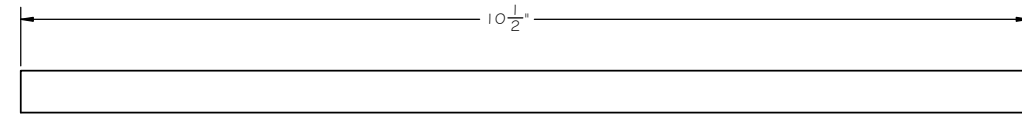


ROTATED FRAMING ASSEMBLY

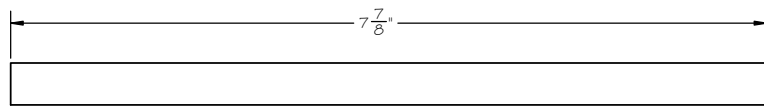
TITLE			
SHORT CABOOSE			
SIZE	CAGE CODE	DWG. NO.	REV.
D	-	GR Plan Set G3	-
SCALE	NONE	UNIT WT.	SHEET 5 OF 9



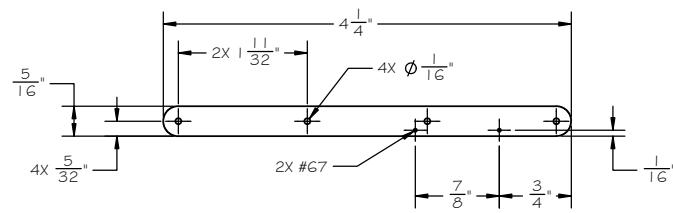
GR63-01 CENTER SILL LEFT  
GR63-02 CENTER SILL RIGHT



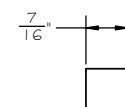
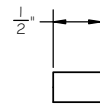
GR63-03 INTERMEDIATE SILL



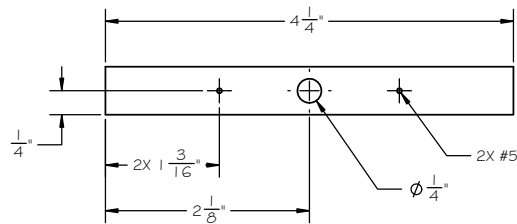
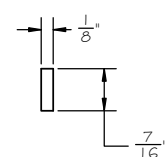
GR63-04 OUTSIDE SILL



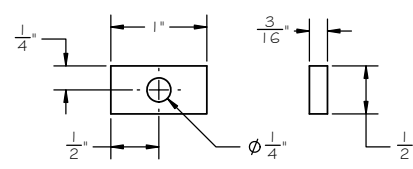
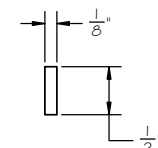
GR63-05 END BEAM



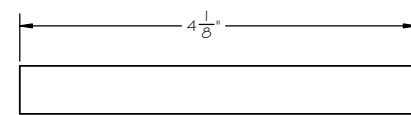
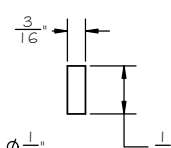
GR63-06 OUTSIDE SILL  
CROSS BEAM



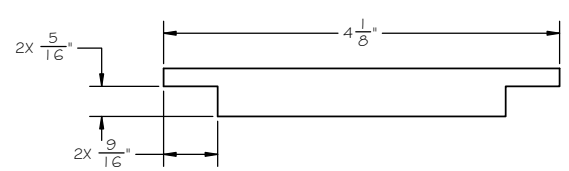
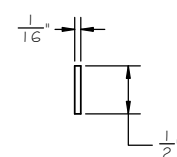
GR63-07 BOLSTER



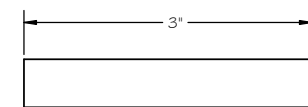
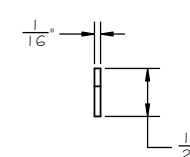
GR63-08 KING  
PIN PAD



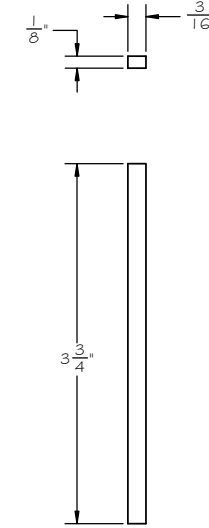
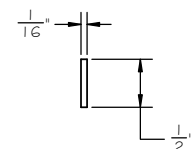
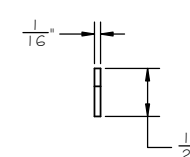
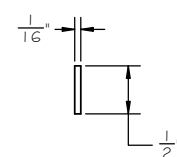
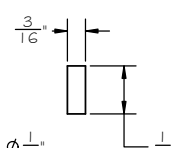
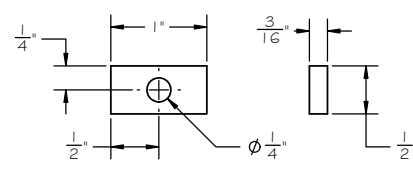
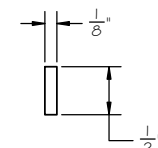
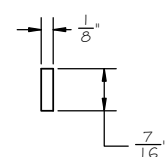
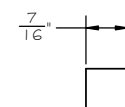
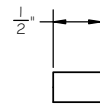
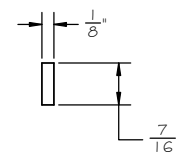
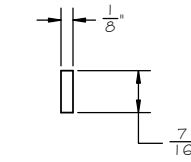
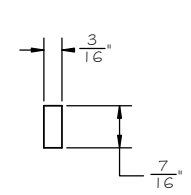
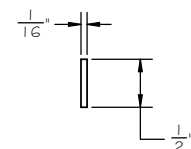
GR63-09 DECK PLANK FULL



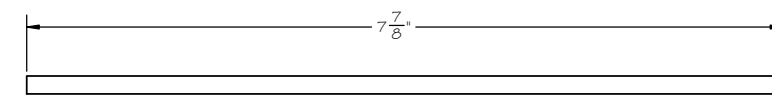
GR63-10 DECK PLANK NOTCHED



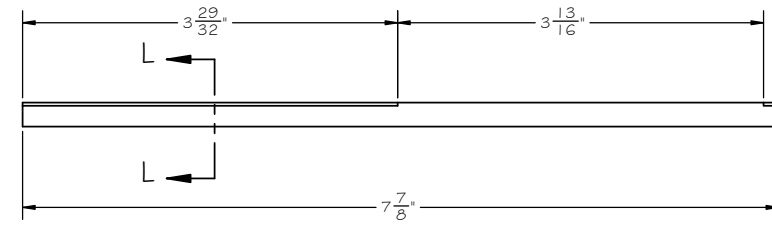
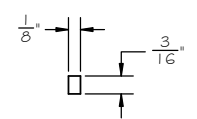
GR63-11 DECK PLANK SHORT



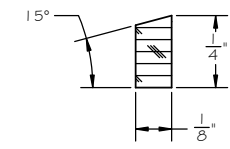
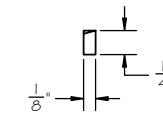
GR63-13  
CORNER POST



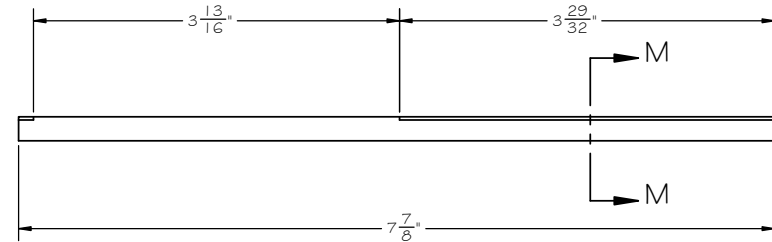
GR63-12 SIDE WALL SHOE



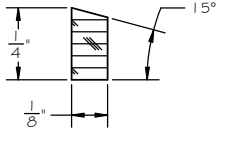
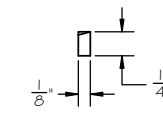
GR63-14 SIDE WALL HEADER RIGHT



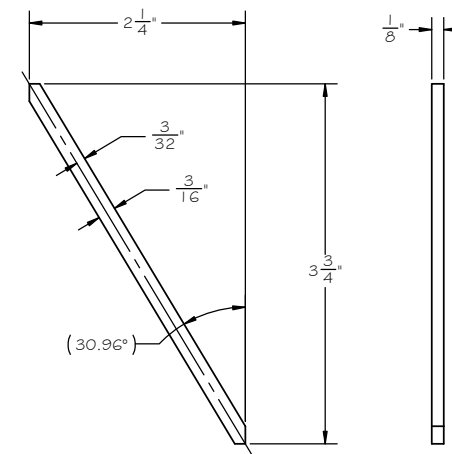
SECTION L-L  
2 PLACES



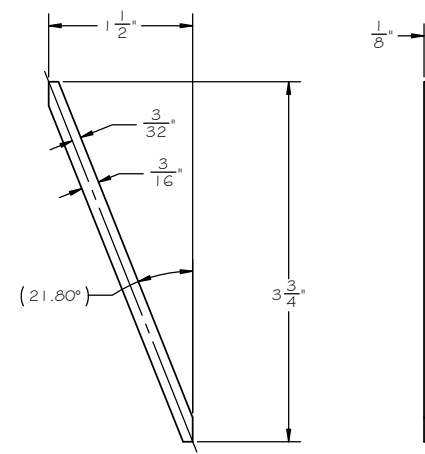
GR63-15 SIDE WALL HEADER LEFT



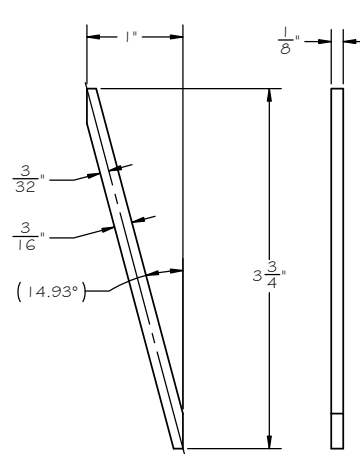
SECTION M-M  
2 PLACES



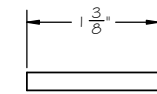
GR63-16 SIDE WALL  
DIAGONAL LONG



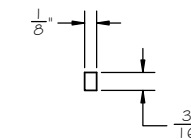
GR63-17 SIDE WALL  
DIAGONAL SHORT



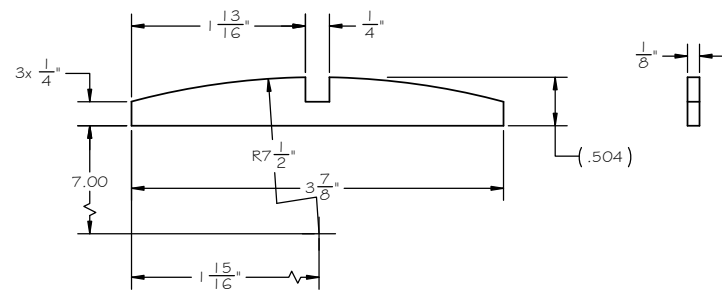
GR63-19 END WALL  
DIAGONAL



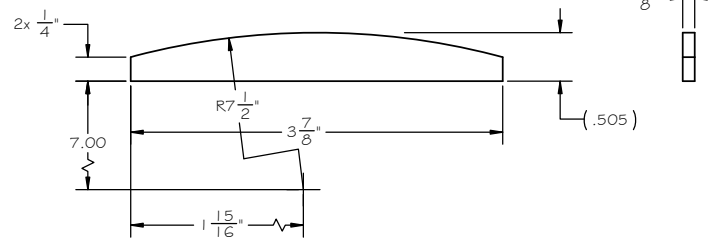
GR63-18 END WALL SHOE



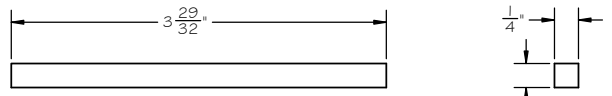
TITLE			
SHORT CABOOSE			
SIZE	CAGE CODE	DWG. NO.	REV.
D	-	GR Plan Set G3	-
SCALE	NONE	UNIT WT.	SHEET 6 OF 9



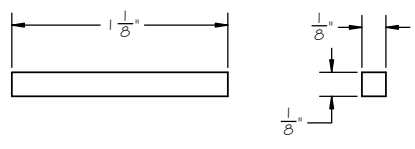
GR63-20 RAFTER 'A'



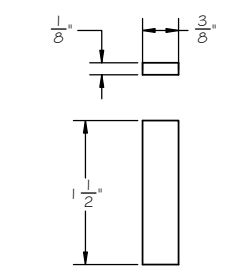
GR63-21 RAFTER 'B'



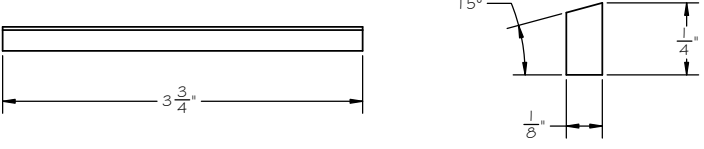
GR63-22 RIDGE BEAM



GR63-23 SIDE WINDOW SHOE



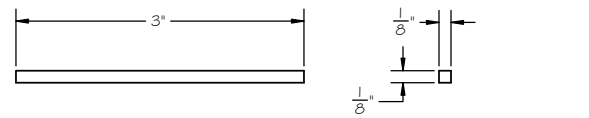
GR63-24 CUPOLA CORNER POST



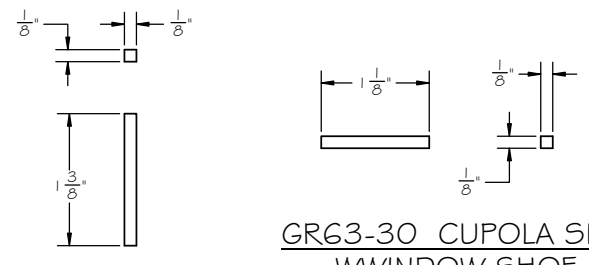
GR63-25 CUPOLA SIDE WALL HEADER RIGHT  
GR63-26 CUPOLA SIDE WALL HEADER LEFT



GR63-27 RIDGE BEAM CUPOLA



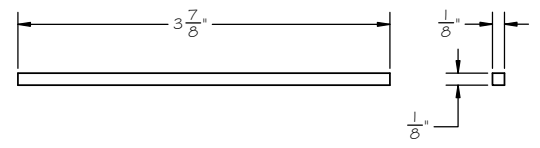
GR63-28 CUPOLA SIDE WALL SHOE



GR63-30 CUPOLA SIDE WINDOW SHOE



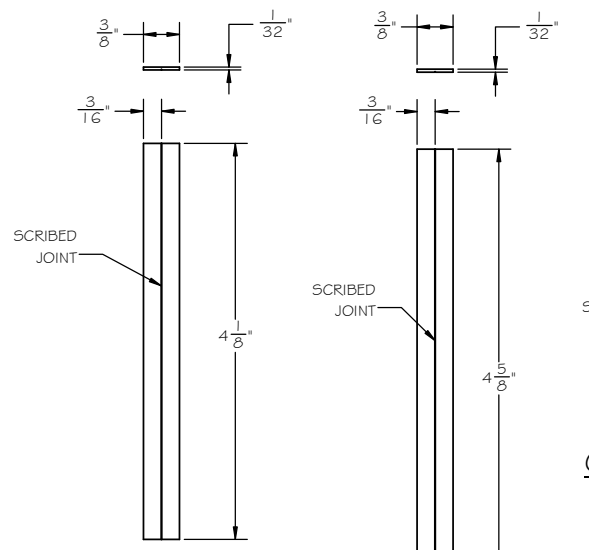
GR63-29 CUPOLA SIDE WINDOW POST



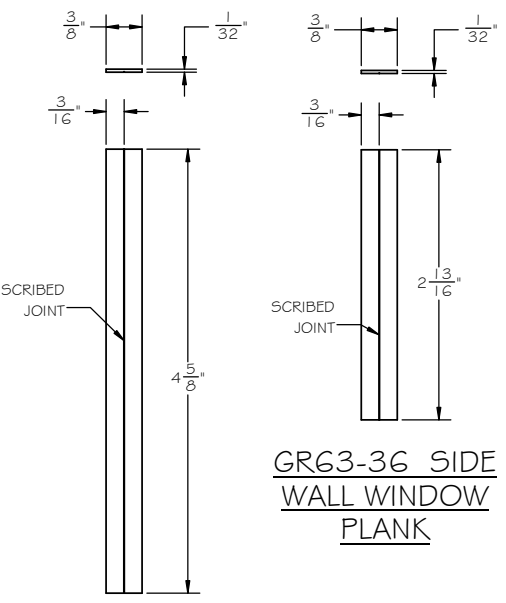
GR63-32 CUPOLA END WINDOW SHOE



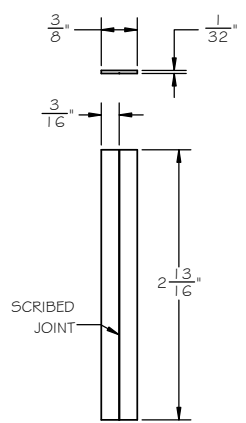
GR63-31 CUPOLA END WALL SHOE



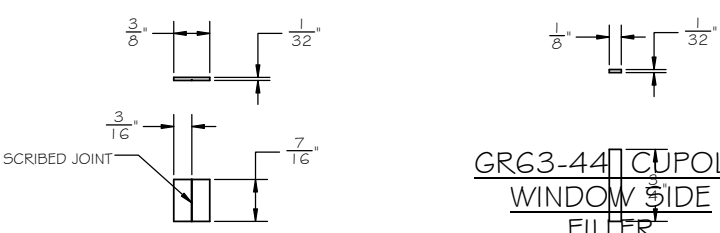
GR63-33 END WALL PLANK



GR63-35 SIDE WALL PLANK

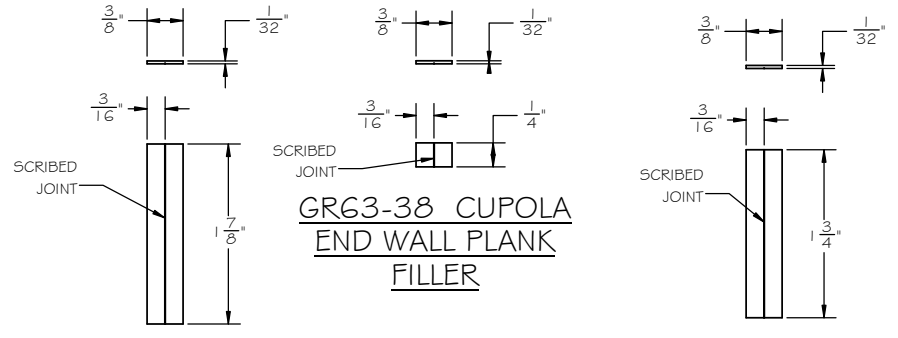


GR63-36 SIDE WALL WINDOW PLANK



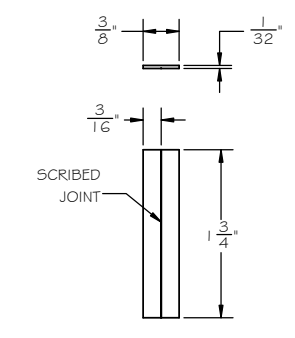
GR63-34 END WALL PLANK FILLER

GR63-44 CUPOLA WINDOW SIDE FILLER



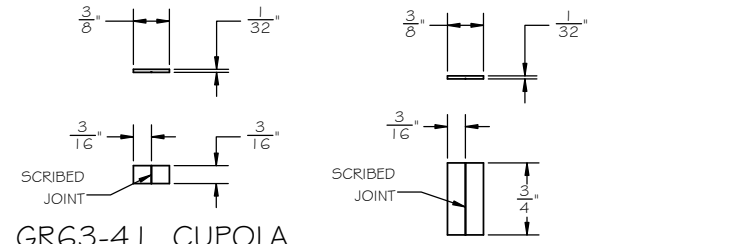
GR63-37 CUPOLA END WALL PLANK

GR63-38 CUPOLA END WALL PLANK FILLER



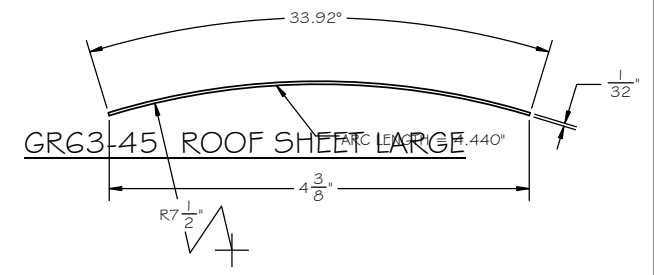
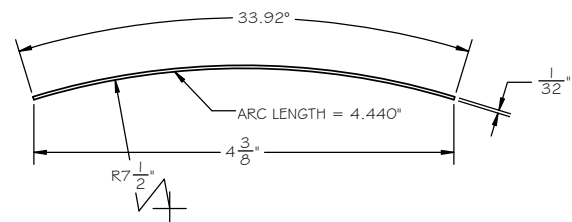
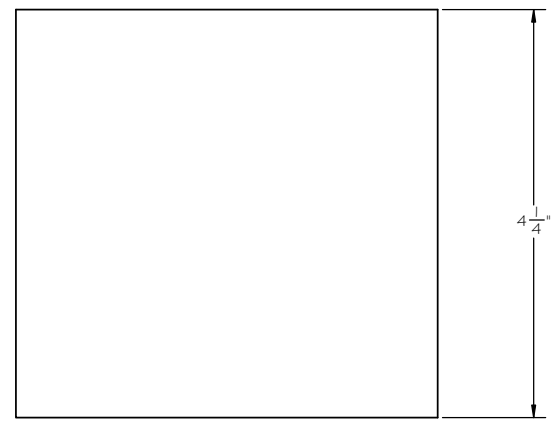
GR63-38 CUPOLA SIDE WALL PLANK

GR63-38 CUPOLA SIDE WALL PLANK SHORT



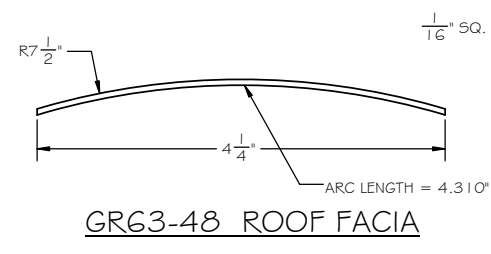
GR63-41 CUPOLA SIDE WALL PLANK FILLER

GR63-42 CUPOLA END WALL PLANK SHORT

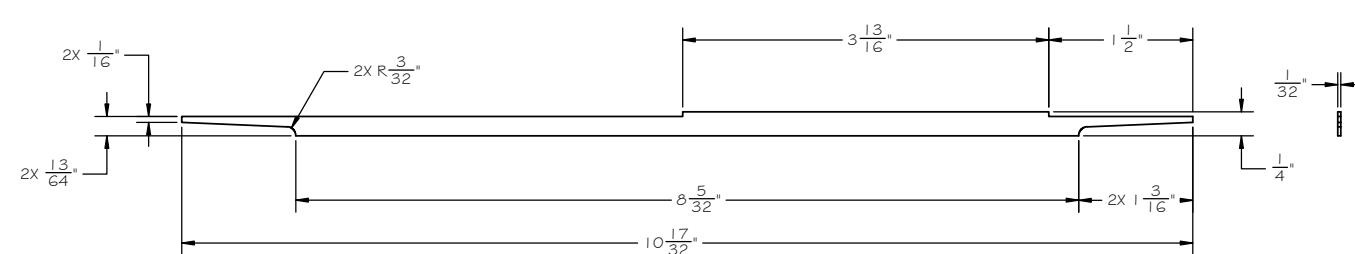


GR63-46 ROOF SHEET SMALL

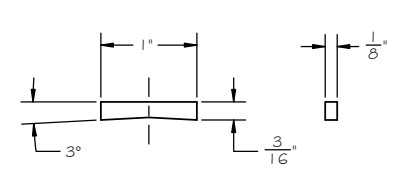
TITLE			
SHORT CABOOSE			
SIZE	CAGE CODE	DWG. NO.	REV
D	-	GR Plan Set G3	-
SCALE	NONE	UNIT WT.	SHEET 7 OF 9



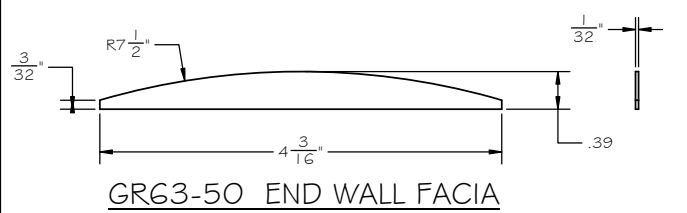
GR63-48 ROOF FACIA



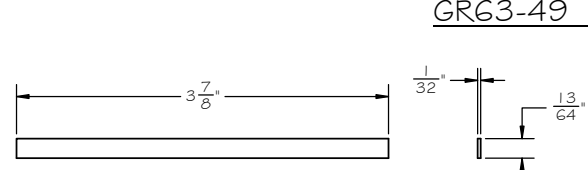
GR63-49 SIDE WALL FACIA



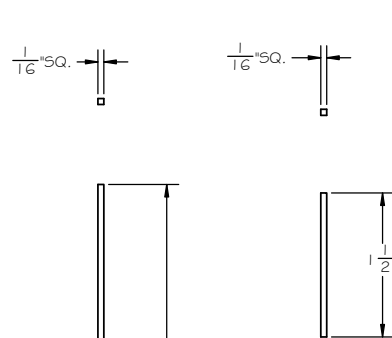
GR63-73 ROOF WALK SUPPORT



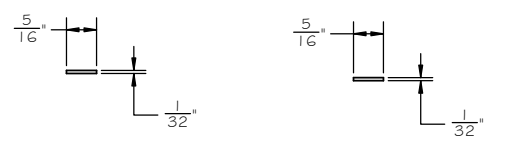
GR63-50 END WALL FACIA



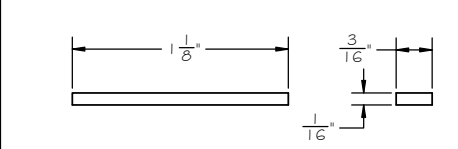
GR63-51 CUPOLA SIDE FACIA



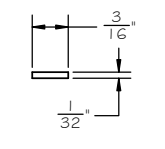
GR63-72 CORNER TRIM CUPOLA



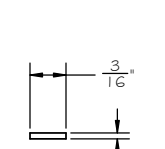
GR63-75 ROOF WALK PLANK SHORT



GR63-52 SIDE WINDOW STOOL

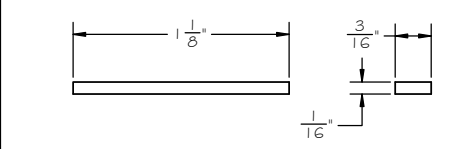


GR63-55 CUPOLA WINDOW STOOL

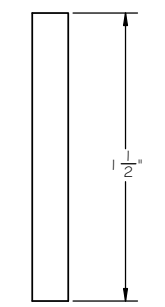


GR63-67 DOOR RAIL

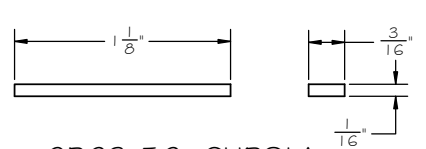
GR63-71 CORNER TRIM LOWER



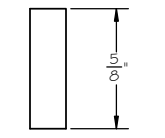
GR63-53 SIDE WINDOW HEAD



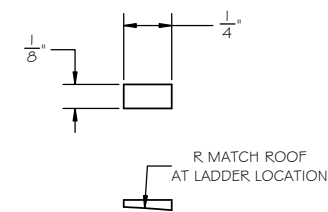
GR63-54 SIDE WINDOW FRAME



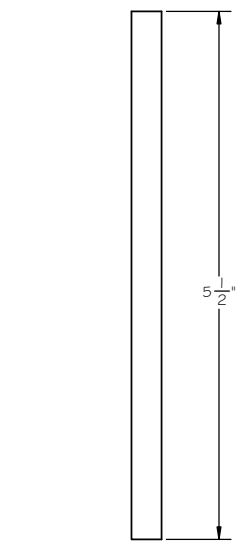
GR63-56 CUPOLA WINDOW HEAD



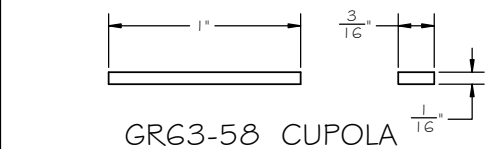
GR63-57 CUPOLA WINDOW FRAME



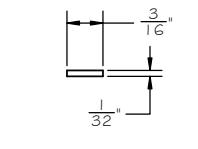
GR63-76 LADDER ROOF BLOCK INSIDE



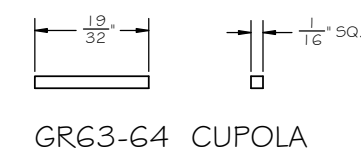
GR63-74 ROOF WALK PLANK LONG



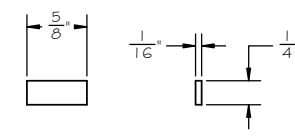
GR63-58 CUPOLA END WINDOW STOOL



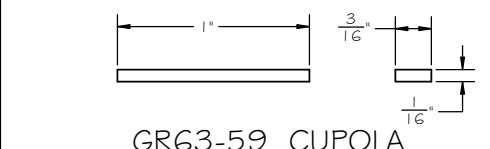
GR63-60 CUPOLA END WINDOW FRAME



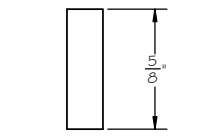
GR63-64 CUPOLA SIDE WINDOW LONG RAIL



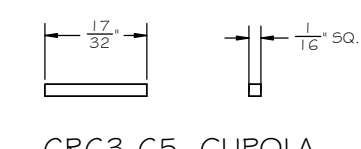
GR63-68 DOOR STILE



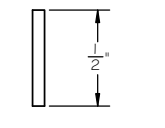
GR63-59 CUPOLA END WINDOW HEAD



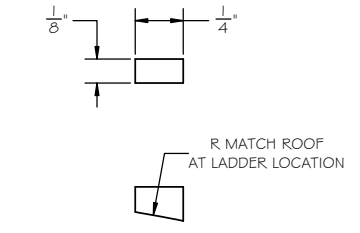
GR63-60 CUPOLA END WINDOW FRAME



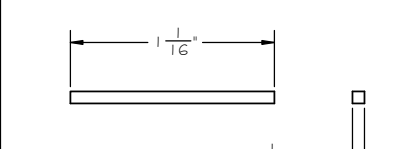
GR63-65 CUPOLA SIDE WINDOW SHORT RAIL



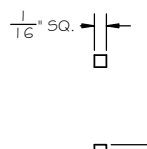
GR63-66 CUPOLA SIDE WINDOW STILE



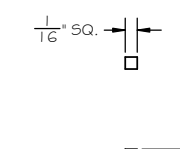
GR63-77 LADDER ROOF BLOCK OUTSIDE



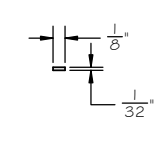
GR63-61 WINDOW SASH RAIL



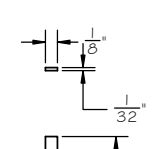
GR63-62 WINDOW LOWER SASH STILE



GR63-63 WINDOW UPPER SASH STILE



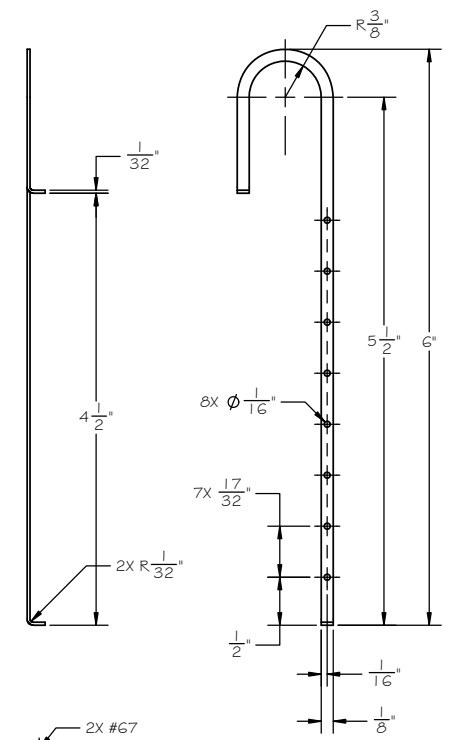
GR63-69 UPPER DOOR PANEL



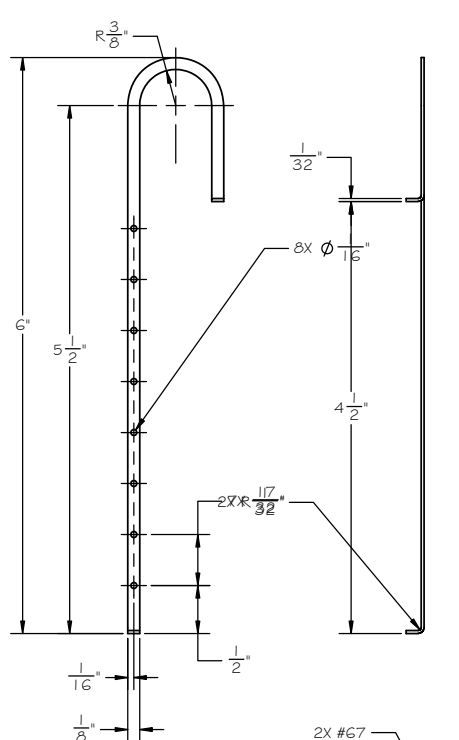
GR63-70 LOWER DOOR PANEL

TITLE			
SHORT CABOOSE			
SIZE	CAGE CODE	DWG NO.	REV
D	-	GR Plan Set G3	-
SCALE	NONE	UNIT WT.	SHEET 8 OF 9

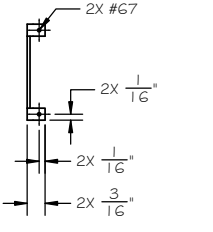




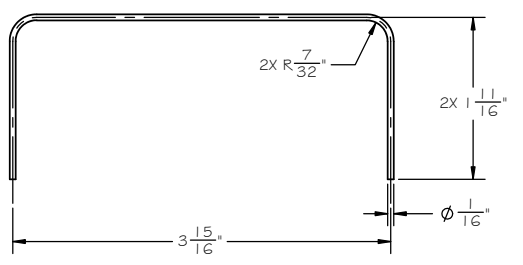
GR63-78 LADDER RAIL LEFT



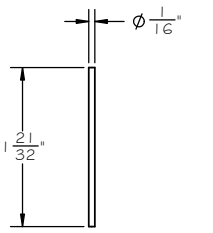
GR63-79 LADDER RAIL RIGHT



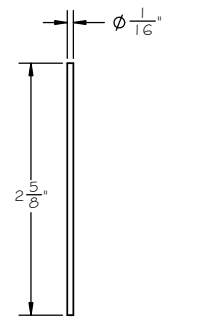
GR63-80 LADDER RUNG



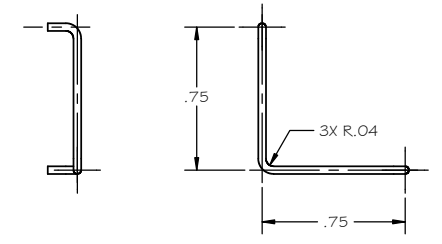
GR63-81 END RAILING



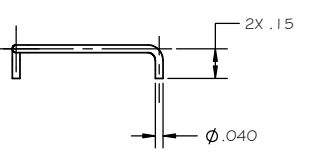
GR63-82 END RAILING POST



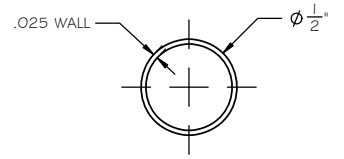
GR63-83 BRAKE SHEEL STAFF



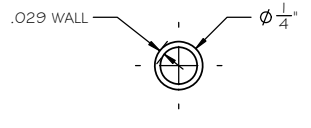
GR63-84 CUPOLA ROOF GRAB IRON



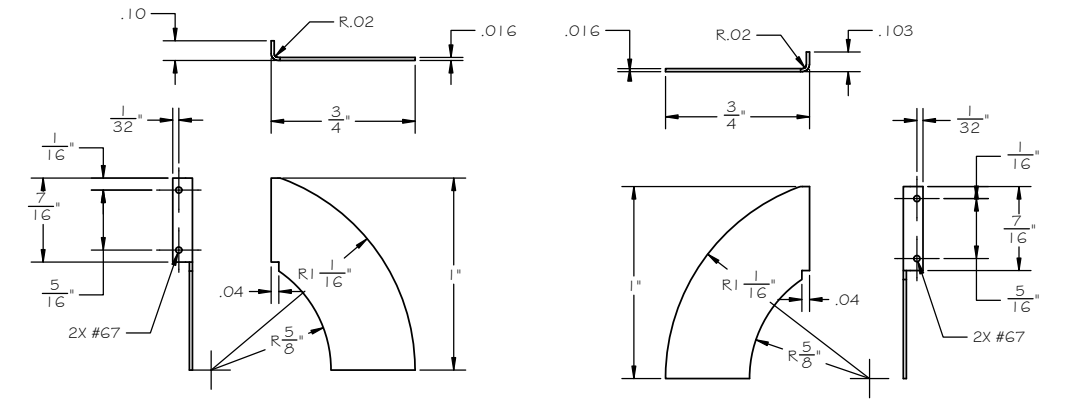
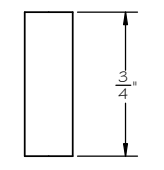
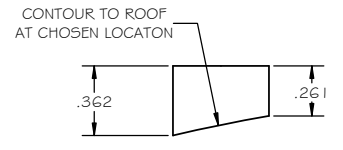
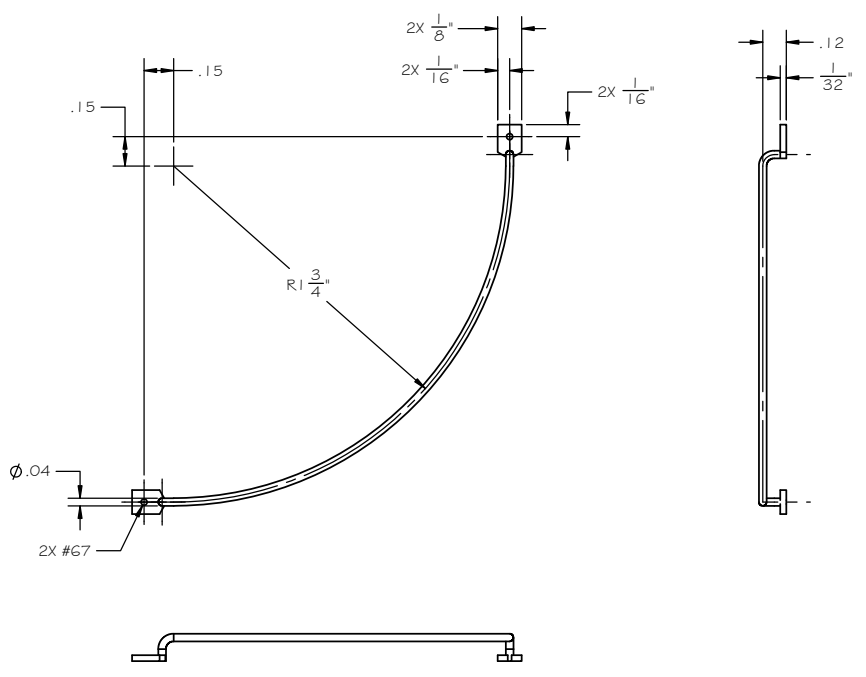
GR63-85 BODY GRAB IRON



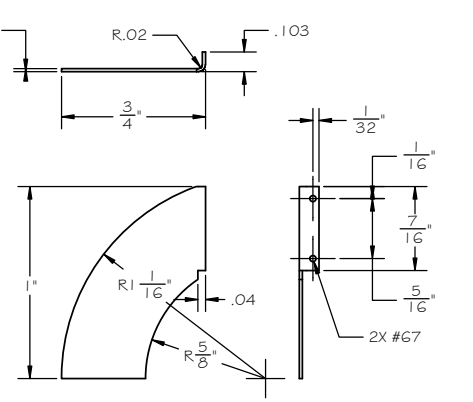
GR63-86 SMOKE JACK BASE



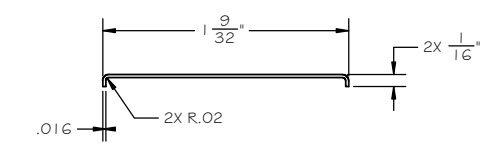
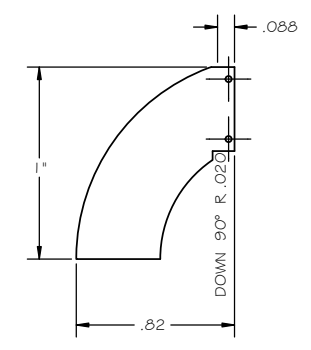
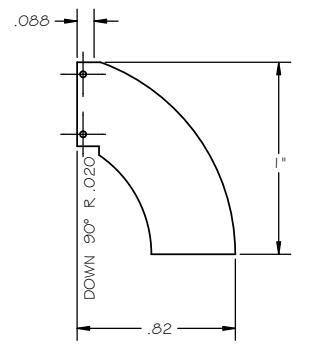
GR63-87 SMOKE STACK



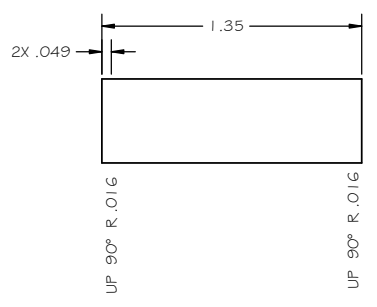
GR63-88 STEP SIDE LEFT



GR63-89 STEP SIDE RIGHT



GR63-90 STEP BOTTOM



TITLE			
SHORT CABOOSE			
SIZE	CAGE CODE	DWG NO.	REV
D	-	GR Plan Set G3	-
SCALE	NONE	UNIT WT.	SHEET 9 OF 9