

FIND NO.	QTY.	CAGE CODE	ITEM IDENTIFICATION OR PART NO.	NOMENCLATURE	MATERIAL	SPECIFICATION	NOTE	ZONE
42	1		GRG2-42	SMOKE JACK CAP	WOOD	DOWEL, 5/8 DIA X 1/32		
43	1		GRG2-43	SMOKE STACK	WOOD	DOWEL, 1/4 DIA X 3/4		
44	2		GRG2-44	BRAKE CYLINDER PLANK	WOOD	1/32 X 1/2 X 1 3/4		
45	2		GRG2-45	END RAIL	BRASS, FLAT BAR, 1/32 X 1/8 X 2.9375	MAKE FROM F-1-4	8	
46	2		GRG2-46	END RAIL POST	BRASS, ROD, ROUND, .063 DIA	MAKD FROM 8859K511	2	
47	6		GRG2-47	SIDE DOOR GUIDE	BRASS, FLAT BAR, 1/32 X 1/8 X .460	MAKE FROM F-1-4	8	
48	4		GRG2-48	DOOR SLIDE	BRASS, FLAT BAR, 1/32 X 1/8 X .460	MAKE FROM F-1-4	8	
49	2		GRG2-49	DOOR TRACK	BRASS, FLAT BAR, 1/32 X 1/8 X 4.550	MAKE FROM F-1-4	8	
50	6		GRG2-50	LADDER RUNG	BRASS, ROD, ROUND .047 DIA	MAKE FROM 8859K491	2	
51	1		GRG2-51	ROOF GRAB IRON	BRASS, ROD, ROUND, .047 DIA	MAKE FROM 8859K491	2	
52	8		GRG2-52	STRAP HINGE, TOOL BOX	BRASS, FLAT BAR, 1/64 X 1/8 X .873	MAKE FROM F-1X-4	8	
53	2		GRG2-53	BUTT HINGE, FLAT	BRASS, BAR, 1/64 X 1/8 X .3125	MAKE FROM F-1X-4	8	
54	4		GRG2-54	HINGE BUTT TUBE	BRASS, TUBE, 3/32 OD X .014 WALL	MAKE FROM TT-43	8	
55	2		GRG2-55	STRAP HINGE, DOOR	BRASS, FLAT BAR, 1/64 X 1/8 X .955	MAKE FROM F-1X-4	8	
56	2		GRG2-56	BRAKE ROD, TRUCK	BRASS, ROD, ROUND, .047 DIA	MAKE FROM 8859K491	2	
57	1		GRG2-57	BRAKE ROD, LINK	BRASS, ROD, ROUND, .047 DIA	MAKE FROM 8859K491	2	
58	1		GRG2-58	BRAKE ROD BRAKE WHEEL	BRASS, ROD, ROUND, .047 DIA	MAKE FROM 8859K491	2	
59	8		GRG2-59	TRUSS ROD	BRASS BAR, BOUND, .063 DIA	MAKE FROM 8859K511	2	
60	1		GRG2-60	BRAKE STAFF	BRASS, ROD, ROUND, .063 DIA	MAE FROM 8859-K511	2	
61	1		GRG2-61	SMOKE STACK CAP	BRASS, BAR, 1/64 X 3/4 X 1.230	MAKE FROM F-1X-24	8	
62	5		GR44-24	ROOF WALK SUPPORT	WOOD	1/8 X 3/16 X 1		
63	3		GR57-50	STIRRUP STEP	BRASS, 1/32 X 1/8	MAKE FROM F-1-4	8	
64	2		GR57-57	DOOR HANDLE	BRASS, ROD, ROUND, .047 DIA	MAKE FROM 8859K491	2	
65	1		GRG7-15	BRAKE RIGGING SHORT LEVER	BRASS, 1/32 X 1/8 X 1 9/32	MAKE FROM 815026	2	
66	1		GRG7-16	BRAKE RIGGING LONG LEVER	BRASS, 1/32 X 1/8 X 1 5/8	MAKE FROM 815026	2	
67	3		GRG7-20	BRAKE RIGGING SUPPORT	BRASS, ROUND, .047 DIA	MAKE FROM 8859K91	2	
68	8		GRG7-24	QUEEN POST TUBE	TUBING, BRASS, .066 ID X .014 WALL THK.	MAKE FROM 8859K18	2	
69	8		GRG7-25	COTTER PIN, NEEDLE BEAM	BRASS, 1/16 DIA	MAKE FROM 98450A106	2	
70	8		GRG7-26	COTTER PIN, BOLSTER	BRASS, 1/16 IA	MAKE FROM 98450A106	2	
71	1		GRG7-27	ESCUTCHEON PIN	BRASS	MAKE FROM 97936A115	2	
72	2		GRG7-29	BUSHING	BUTYRATE TUBE	MAKE FROM TB8 (1/4" OD X 1/8" ID)	5	
73	4		GRG7-30	TURNBUCKLE	CASTING			
74	8		GRG7-31	NUT # WASHER CASTING, TRUSS ROD	CASTING			
75	80		GRG7-39	CARRIAGE BOLT	STEEL	MAKE FROM 304865	9	
76	2		90016A009	TAPPING INSERT FOR WOOD	BRASS No 8-32 UNC		2	
77	8		91545A420	WASHER, FLAT	NYLON	3.2mm ID X 7mm OD X .5mm THK	2	
78	2		92916A335	WASHER, FLAT	BRASS	0.172" ID X 0.375" OD X 0.031" THK	2	
79	2		94070A194	SCREW, MACHINE, PAN HEAD	BRASS, No 8-32 UNC x 1/2" LG		2	
80	8		95395A101	WASHER, FLAT	BRASS	.062 ID x .125 OD x .015 THK	2	
81	2		R2032	ARCH BAR TRUCK	PLASTIC		4	
82	4		92421	WHEEL SET	STEEL, 31.0mm DIAMETER		3	
83	2		1831	COUPLER, LARGE OFFSET	PLASTIC		6	
84	1		1018	BRAKE WHEEL	CASTING		7	
85	1		1018	PAWL AND RATCHET	CASTING		7	
86	1		0045	K VALVE MASTER	CASTING		7	
87	1		0045	K VALVE SLAVE	CASTING		7	

FIND NO.	QTY.	CAGE CODE	ITEM IDENTIFICATION OR PART NO.	NOMENCLATURE	MATERIAL	SPECIFICATION	NOTE	ZONE
1	1		GRG2-01	CENTER SILL, RIGHT	WOOD	3/16 X 1/4 X 11.00		
2	1		GRG2-02	CENTER SILL, LEFT	WOOD	3/16 X 1/4 X 11.00		
3	2		GRG2-03	INTERMEDIATE SILL	WOOD	3/16 X 1/4 X 11.00		
4	2		GRG2-04	OUTER SILL	WOOD	1/4 X 3/8 X 11.00		
5	2		GRG2-05	END BEAM	WOOD	1/4 X 3/8 X 4 1/4		
6	2		GRG2-06	BODY BOLSTER	WOOD	1/8 X 1/2 X 4 1/8		
7	2		GRG2-07	KING PIN PAD	WOOD	3/16 X 1/2 X 1.00		
8	2		GRG2-08	NEEDLE BEAM	WOOD	3/16 X 5/16 X 4 1/8		
9	23		GRG2-09	DECK PLANK	WOOD	3/32 X 1/2 X 4 1/4		
10	7		GRG2-10	POST	WOOD	3/16 X 3/16 X 4.00		
11	2		GRG2-11	SIDE WALL HEADER	WOOD	1/4 X 1/4 X 6.00		
12	2		GRG2-12	SIDE DIAGONLA BRACE	WOOD	1/8 X 3/16 X 4.375		
13	28		GRG2-13	SIDE PLANK, LONG	WOOD	1/16 X 1/4 X 2 5/8		
14	28		GRG2-14	SIDE PLANK, SHORT	WOOD	1/16 X 1/4 X 1 3/8		
15	8		GRG2-15	POST, SHORT	WOOD	3/16 X 3/16 X 3.5		
16	2		GRG2-16	END DIAGONLA BRACE	WOOD	1/8 X 3/16 X 3 3/4		
17	2		GRG2-17	RAFTER	WOOD	3/16 X 9/16 X 4.00		
18	1		GRG2-18	RIDGE BEAM	WOOD	1/4 X 5/16 X 6.00		
19	14		GRG2-19	END WALL PLANK, LONG	WOOD	1/16 X 1/4 X 4.00		
20	28		GRG2-20	END WALL PLANK, SHORT	WOOD	1/16 X 1/4 X 1 1/2		
21	34		GRG2-21	ROOF PLANK	WOOD	1/32 X 3/8 X 2 1/4		
22	3		GRG2-22	ROOF WALK PLANK	WOOD	1/32 X 5/16 X 7.00		
23	2		GRG2-23	ROOF WALK TIE	WOOD	1/32 X 1/13 X 1.00		
24	2		GRG2-24	BRAKE PLATFORM SUPPORT	WOOD	1/8 X 7/16 X 1 3/4		
25	5		GRG2-25	BRAKE PLATFORM PLANK	WOOD	1/32 X 5/16 X 1 3/8		
26	28		GRG2-26	TOOL BOX PLANK SIDE	WOOD	1/32 X 1/4 X 3		
27	16		GRG2-27	TOOL BOX END PLANK	WOOD	1/32 X 1/4 X 1 1/16		
28	4		GRG2-28	TOOL BOX END PLANK SLOPED	WOOD	1/32 X 1/4 X 1 1/16		
29	4		GRG2-29	TOOL BOX POST SHORT	WOOD	1/8 X 1/8 X 1 1/8		
30	4		GRG2-30	TOOL BOX POST LONG	WOOD	1/8 X 1/8 X 1 1/4		
31	4		GRG2-31	TOOL BOX LID TIE	WOOD	1/32 X 3/16 X 1 1/4		
32	5		GRG2-32	DOOR PLANK	WOOD	1/32 X 1/4 X 3 1/2		
33	2		GRG2-33	DOOR RAIL	WOOD	1/32 X 1/4 X 1 1/4		
34	1		GRG2-34	DOOR DIAGONAL	WOODS	1/32 X 3/16 X 2 7/8		
35	24		GRG2-35	SIDE DOOR PLANK	WOOD	1/32 X 3/16 X 3 5/8		
36	4		GRG2-36	SIDE DOOR RAIL	WOOD	1/32 X 1/4 X 2 1/4		
37	2		GRG2-37	SIDE DOOR DIAGONAL	WOOD	1/32 X 3/16 X 3 5/8		
38	1		GRG2-40	LADDER CORNER POST	WOOD	3/16 X 3/16 X 4.00		
39	1		GRG2-38	LADDER POST	WOOD	3/16 X 3/16 X 3.5		
40	2		GRG2-39	DOOR GUIDE SPACER	WOOD	3/16 X 3/16 X 3/8		
41	1		GRG2-41	SMOKE JACK BASE	WOOD	DOWEL, 1/2 DIA X 3/8		

THIS DRAWING PACKAGE IS AN ENHANCEMENT TO THE DRAWINGS PUBLISHED IN GARDEN RAILWAYS MAGAZINE ORIGINALLY DRAWN AND PROVIDED BY TED STINSON.

ZONE	LTR	DESCRIPTION	DATE	APPROVED
-		ORIGINAL ISSUE.		

Citico Creek Model Products

Citico Creek Model Products PO Box 223 Lynn Haven, FL 32444	
PROJECT	TITLE
Drawn	B.C.
Engn/Design	2015-08-09
Checked	
Approved	

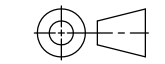
WORK CABOOSE

SIZE	CAGE CODE	DWG NO.	REV
D	-	GR Plan Set G2	-
SCALE	NONE	UNIT WT.	SHEET OF 7

CAD GENERATED DRAWING. CHANGES SHALL BE INCORPORATED BY THE CURRENT DESIGN ACTIVITY.

THIS DOCUMENT IS THE PROPERTY OF CITICO CREEK MODEL PRODUCTS AND MUST BE RETURNED ON DEMAND. THE INFORMATION HEREON MAY NOT BE USED OR DIVULGED WITHOUT THE EXPRESSED WRITTEN PERMISSION OF CITICO CREEK MODEL PRODUCTS.

INTERPRET DRAWING PER ASME Y14.1.00
UNLESS OTHERWISE SPECIFIED DIMENSIONS ARE IN INCHES
TOLERANCES
ANGLES ± 0°30'
FRACTIONS ± 1/32
DECIMALS ± .05, .XX, .02, .XXX, .010
BROKEN EDGES 0.15 MAX.
FILETS .015 R MAX.
PART SHALL BE FREE OF BURRS
SURFACE ROUGHNESS 125 ✓



NEXT ASSY	USED ON

10	9	8	7	6	5	4	3	2	1	REVISION SHEET
										REV STATUS OF SHEETS

NOTES:
1. FOR NOTES AND ASSEMBLY INSTRUCTIONS SEE SHEET 2.

NOTES:

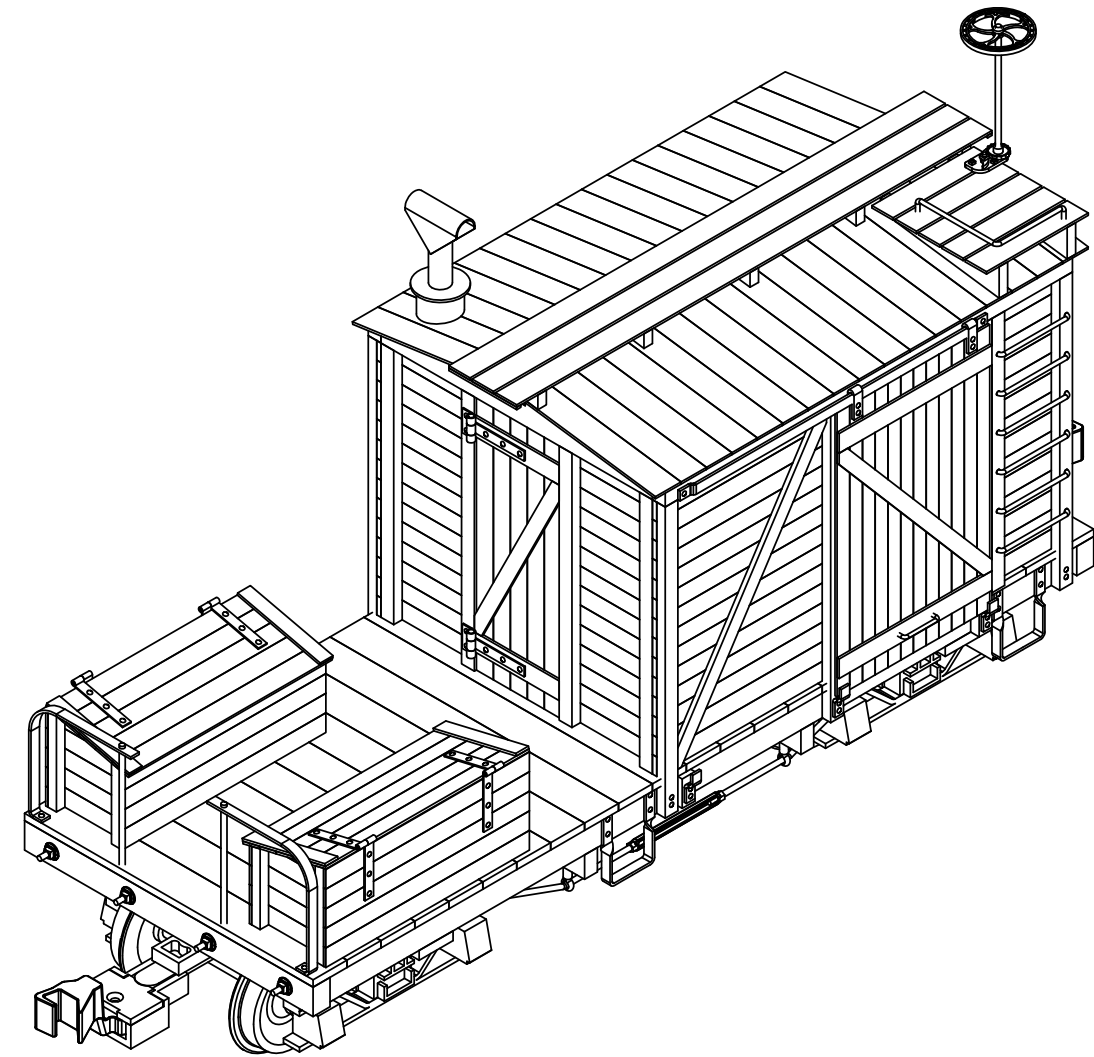
1. BELOW LISTED SUPPLIERS ARE THOSE USED IN THE DEVELOPMENT OF HTIS DRAWING PACKAGE. ALTERNATE SUPPLIERS MAY BE USE AT THE BUILDERS OPTION. I HAVE NO AFFILIATION WITH ANY OF THE SUPPLIERS NOTED BELOW.
2. PART NUMBER LISTED IS FOR MCMASTER-CARR SUPPLY COMPANY, 6100 SULTON INDUSTRIAL BLVD., ATLANTA, GA 30336 (404) 346-7000.
3. PART NUMBER LISTED IS FOR BACHMANN INDUSTRIES, 1400 EAST ERIE AVENUE, PHILADELPHIA, PA 19142 (215) 533-1600.
4. PART NUMBER LISTED IS FOR USA TRAINS, PO BOX 100, MALDON, MA 02148 (781) 322-6084.
5. PART NUMBER LISTED IS FOR PLASTRUCT, INC., 1020 SOUTH WALACE PLACE, CITY OF INDUSTRY, CA 91748 (636) 912-7016 OR (800) 666-7015.
6. PART NUMBER LISTED IS FOR KADEE QUALITY PRODUCTS, 673 AVENUE C, WHITE CITY, OR 97503 (541) 826-3883.
7. PART NUMBER LISTED IS FOR OZARK MINIATURES, INC., 3461 S 5225W, CEDAR CITY, UT 84720 (435)586-1036.
8. PART NUMBER LISTED IS FOR SPECIAL SHAPES, 6911 W 59th STREET, CHICAGO, IL 60638 (773) 586-8517.
9. PART NUMBER LISTED IS FOR HOBBY LOBBY, 7600 A SW 44th STREET, OKALAHOMA CITY, OK 73173 (800) 888-0321
10. MANY OF THE ABOVE ITEMS MAY BE PURCHASED FROM YOUR LOCAL HOBBY SHOP OR YOUR PREFERRED ONLINE SUPPLIER.
11. ADDITIONAL ADHESIVES, PAINTS, DECALS, ETC., MAY BE FOUND AT HOBBY LOBBY, MICHAELS OR JO ANNES FABRICS.
12. LOCTITE 242 THREAD LOCKER MAY BE FOUND AT FASTENAL (www.fastenal.com)
13. BE CERTAIN THAT THE DOOR HANDLE DOES NOT PROTRUDE THROUGH THE DOOR. PROTRUSION THROUGH THE DOOR WILL IMPEDE DOOR OPERATION.

SUGGESTED ASSEMBLY INSTRUCTIONS

1. FIND NUMBER 44 (BRAKE CYLINDER PLANK), FIND NUMBERS 56 THRU 58 (BRAKE ROD TRUCK, BRAKE ROD LINK, BRAKE ROD BRAKE WHEEL), FIND NUMBERS 65 THRU 67 (BRAKE RIGGING SHORT LEVER, BRAKE RIGGING LONG LEVER, BRAKE RIGGING SUPPORT), FIND NUMBER 71 (ESCUTCHEON PIN), FIND NO 86 (K VALVE MASTER) AND FIND NO 87 (K VALVE SLAVE) MAY BE ELIMINATED IF BRAKE RIGGING DETAIL IS NOT DESIRED.
2. ASSEMBLE MAIN FRAME COMPONENTS FIND NUMBERS 1 (CENTER SILL, RIGHT), 2 (CENTER SILL, LEFT), 3 (INTERMEDIATE SILL), 4 (OUTER SILL), 5 (END BEAM), AND 8 (NEEDLE BEAM) USING A GOOD QUALITY WOOD GLUE.
3. ASSEMBLE FIND NUMBERS 6 (BODY BOLSTER) AND 7 (KING PIN BLOCK) SEPARATELY. AFTER GLUE HAS COMPLETELY DRIED, DRILL 1/4" HOLE AS SHOWN. INSTALL FIND NUMBER 76 (TAPPING INSERT FOR WOOD) IN 1/4" HOLE WITH SCREW DRIVER SLOT LOCATED ON FIND NUMBER 7 SIDE OF ASSEMBLY. COATING THE HOLE WITH THICK CA PRIOR TO INSTALLING THE TAPPING INSERT WILL SECURE IT IN PLACE PERMANENTLY. LOCATE AND INSTALL ASSEMBLY ON FRAME.
4. ASSEMBLE FIND NUMBERS 68 (QUEEN POST TUBE), 69 (COTTER PIN, NEEDLE BEAM) AND 80 (WASHER, FLAT) AND SOLDER TO MAKE A QUEEN POST (8 REQUIRED).
5. SLIP ONE EACH QUEEN POST ASSEMBLY AND FIND NUMBER 70 (COTTER PIN, BOLSTER) ON TO EACH FIND NUMBER 59 (TRUSS ROD). SLIP TRUSS RODS THROUGH HOLES IN END BEAMS AND INTO FIND NUMBER 73 (TURNBUCKLE). INSTALL COTTER PINS IN MATING HOLES IN BOLSTER AND NEEDLE BEAM SECURING WITH THICK CA.
6. SHOULD BRAKE RIGGING DETAIL BE DESIRED, THIS WOULD BE A GOOD TIME TO INSTALL IT, FOLLOWED BY INSTALLING FIND NUMBER 9 (DECK PLANK).
7. MAKE A SUB ASSEMBLIES OF THE LEFT SIDE FRAMING CONSISTING OF FIND NUMBERS 10 (CORNER POST, 11 (SIDE WALL HEADER), 12 (SIDE DIAGONLA BRACE), 13 (SIDE PLANK LONG), 14 (SIDE PLANK SHORT) AND FIND NUMBER 75 (CARRIAGE BOLT).
8. MAKE A SUB ASSEMBLIES OF THE RIGHT SIDE FRAMING CONSISTING OF FIND NUMBERS 10 (CORNER POST, 11 (SIDE WALL HEADER), 12 (SIDE DIAGONLA BRACE), 13 (SIDE PLANK LONG), 14 (SIDE PLANK SHORT), 38 (LADDER CORNER POST), 39 (LADDER POST), 50 (LADDER RUNG), 40 (DOOR GUIDE SPACER), 47 (SIDE DOOR GUIDE), AND FIND NUMBER 75 (CARRIAGE BOLT).
9. MAKE A SUB ASSEMBLY OF THE END WALL FRAMING COSISTING OF FIND NUMBERS 15 (POST, SHORT), 16 (END DIAGONAL BRACE), 17 (RAFTER), AND 19 (END WALL PLANK LONG).
10. MAKE A SUB ASSEMBLY OF THE DOOR WALL FRAMING CONSISTING OF FIND NUMBER 15 (POST SHORT), 17 (RAFTER), 20 (END WALL PLANK SHORT), 32 (DOOR PLANK), 33 (DOOR RAIL), 34 (DOOR DIAGONAL), 53 (HINGE BUTT FLAT), 54 (HINGE BUTT TUBE), 55 (STRAP HINGE DOOR), AND 75 (CARRIAGE BOLT). DOOR MAY BE MADE TO OPEN OR BE SOLID, AT BUILDERS CHOICE.

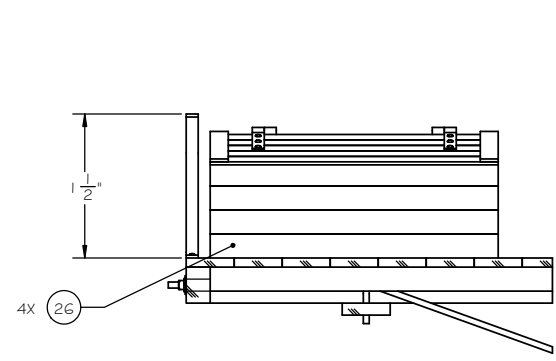
SUGGESTED ASSEMBLY INSTRUCTIONS CONT'D

11. ASSEMBLE (2) SIDE DOORS CONSISTING OF FIND NUMBERS 35 (SIDE DOOR PLANK), 36 (SIDE DOOR RAIL) , 37 (SIDE DOOR DIAGONAL), 48 (DOOR SLIDE), 64 (DOOR HANDLE) AND 75 (CARRIAGE BOLT). INSTALL FIND NUMBER 49 (DOOR TRACK) AND 75 (CARRIAGE BOLT) ON SIDE WALLS AS SHOWN. INSTALL SIDE DOORS ON DOOR TRACK AT THIS TIME, AS IT WILL BE MORE DIFFICULT TO INSTALL AFTER THE ROOF IS INTALLED.
12. ASSEMBLE SIDE WALLS AND END WALL TO MAIN CAR BODY. INSTALL FIND NUMBER 18 (RIDGE BEAM) IN NOTCHES IN RAFTERS
13. ASSEMBLE (2) TOOL BOXES CONSISTING OF FIND NUMBERS 26 (TOOL BOX PLANK SIDE), 27 (TOOL BOX END PLANK), 28 (TOOL BOX END PLANK SLOPED), 29 (TOOL BOX POST SHORT), 30 (TOOL BOX POST LONG), 31 (TOOL BOX LID TIE), 52 (STRAP HINGE TOOL BOX) AND 75 (CARRIAGE BOLT). INSTALL TOOL BOXES AS SHOWN ON DRAWINGS.
14. INSTALL FIND NUMBER 45 (END RAIL), 46 (END RAIL POST), 63 (STIRRUP STEP), AND 75 (NUT AND WASHER CASTING, TRUSS ROD).
15. INSTALL ROOFING CONSISTING OF FIND NUMBER 21 (ROOF PLANK), 62 (ROOF WALK SUPPORT), 22 (ROOF WALK PLANK), 23 (ROOF WALK TIE), 24 (BRAKE PLATFORM SUPPORT), 25 (BRAKE PLATFORM PLANK), 51 (ROOF GRAB IRON), 41 (SMOKE JACK BASE), 42 (SMOKE JACK CAP), 43 (SMOKE STACK) AND 61 (SMOKE STACK CAP).
16. LOCATE AND DRILL 1/16" DIA HOLE IN END BEAM AND INSTALL FIND NUMBER 60 (BRAKE STAFF). LOCATE AND INSTALL FIND NUMBER 85 (RATCHET AND PAWL) AND 84 (BRAKE WHEEL).
17. FIND NUMBER 81 (ARCH BAR TRUCK), DRILL KING PIN HOLE OUT TO 1/4" (.250) DIAMETER. CUT FIND NUMBER 72 (BUSHING) FROM TB8 TUBE APPROXIMATELY 1/4" LONG. INSTALL BUSHING IN KING PIN HOLE IN TRUCK BOLSTER MAKING IT FLUSH ON THE BOTTOM OF THE BOLSTER. SECURE USING ACC OR SOLVENT, AND ALLOW TO SET OVERNIGHT. ONCE SET, FILE BUSHING FLUSH WITH THE TOP OF BOLSTER. DRILL BUSHING OUT TO 0.172 (1 1/64") DIAMETER.
18. ASSEMBLE FIND NUMBER 82 (WHEEL SET) INTO FIND NUMBER 81 USING FIND NUMBER 77 (WASHER, FLAT) TO CENTER AXLES IN THE TRUCK SIDE FRAMES. THESE WASHERS MAY VARY IN THICKNESS, USE IN MULTIPLES OF 2 ON EACH AXLE. WHEEL SET SHOULD SPIN FREELY AFTER INSTALLATION. INSTALL ASSEMBLED TRUCK ON TO CAR BODY USING FIND NUMBER 78 (FLAT WASHER) AND FIND NUMBER 79 (MACHINE SCREW)
19. ASSEMBLE FIND NUMBER 83 (COUPLER, LARGE OFFSET) TO FIND NUMBER 80 (TRUCK) USING FASTENERS SUPPLIED.



WORK CABOOSE

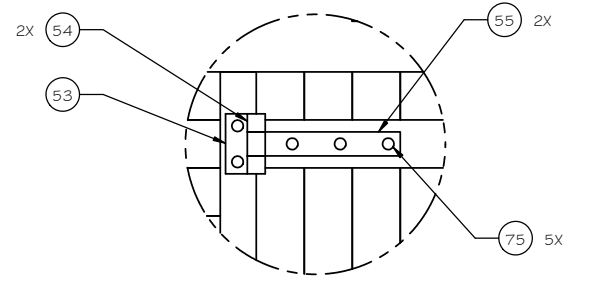
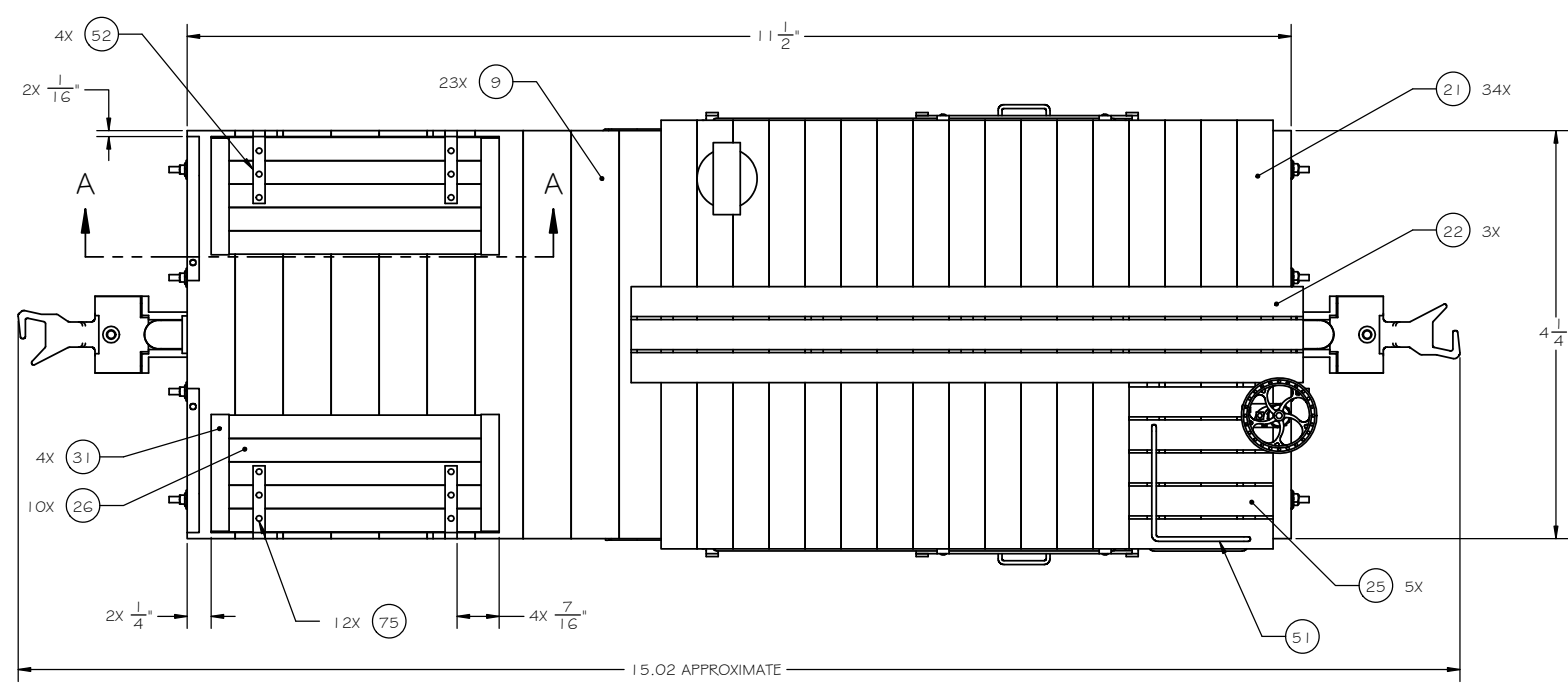
TITLE			
WORK CABOOSE			
SIZE	CAGE CODE	DWG NO.	REV
D	-	GR Plan Set 62	-
SCALE	NONE	UNIT WT.	SHEET 2 OF 7



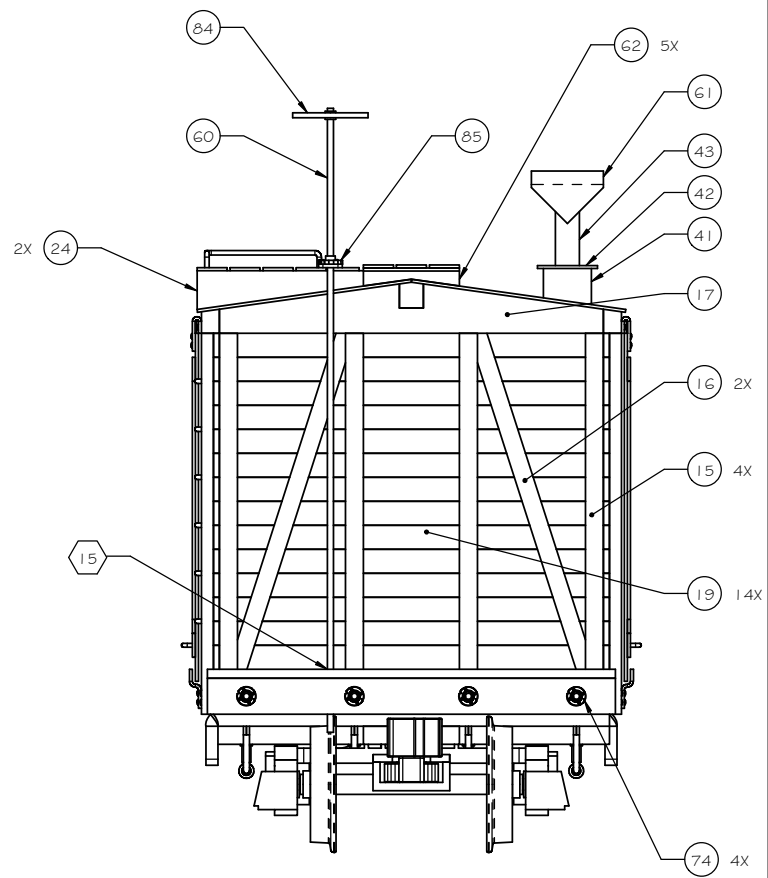
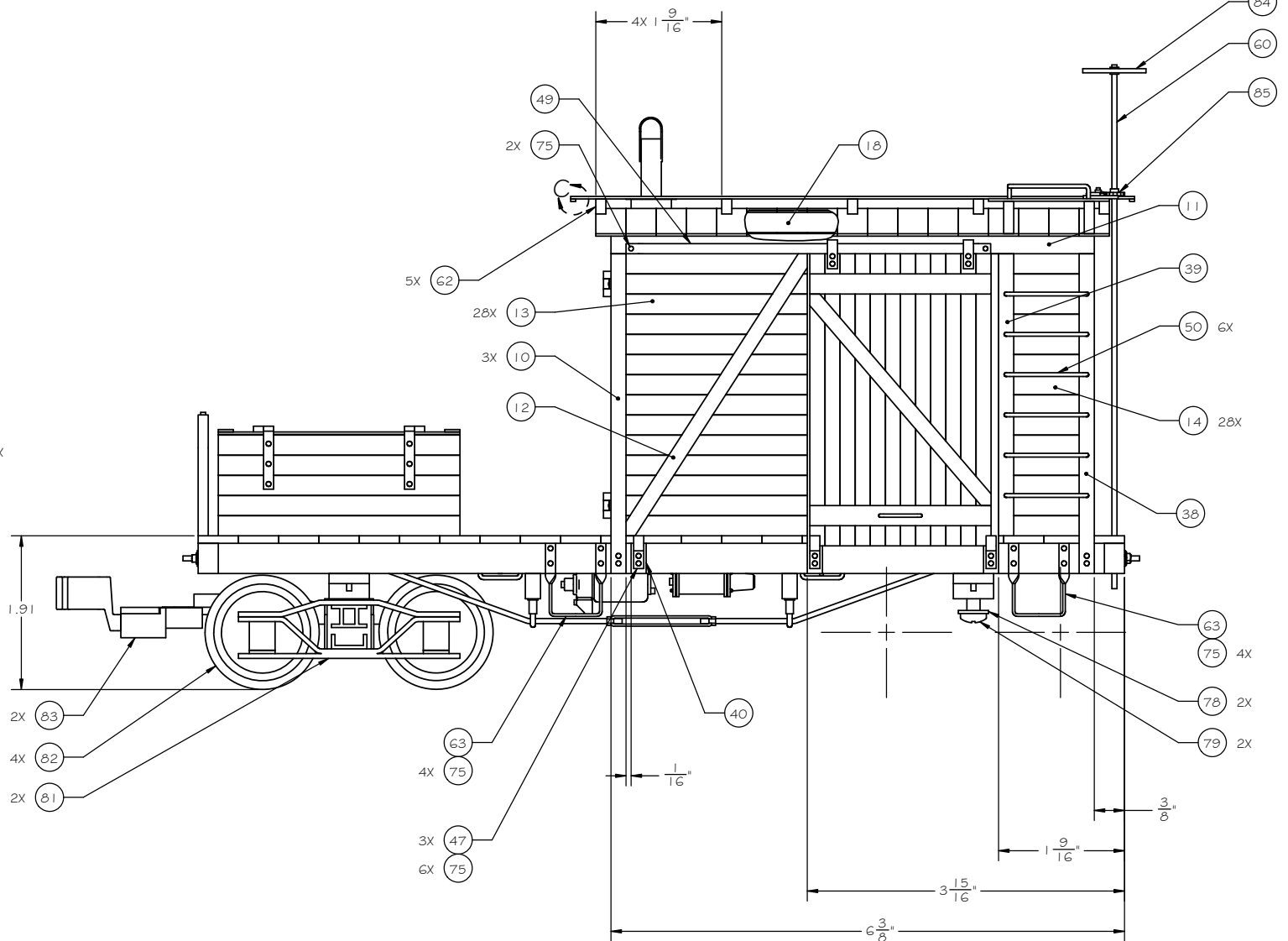
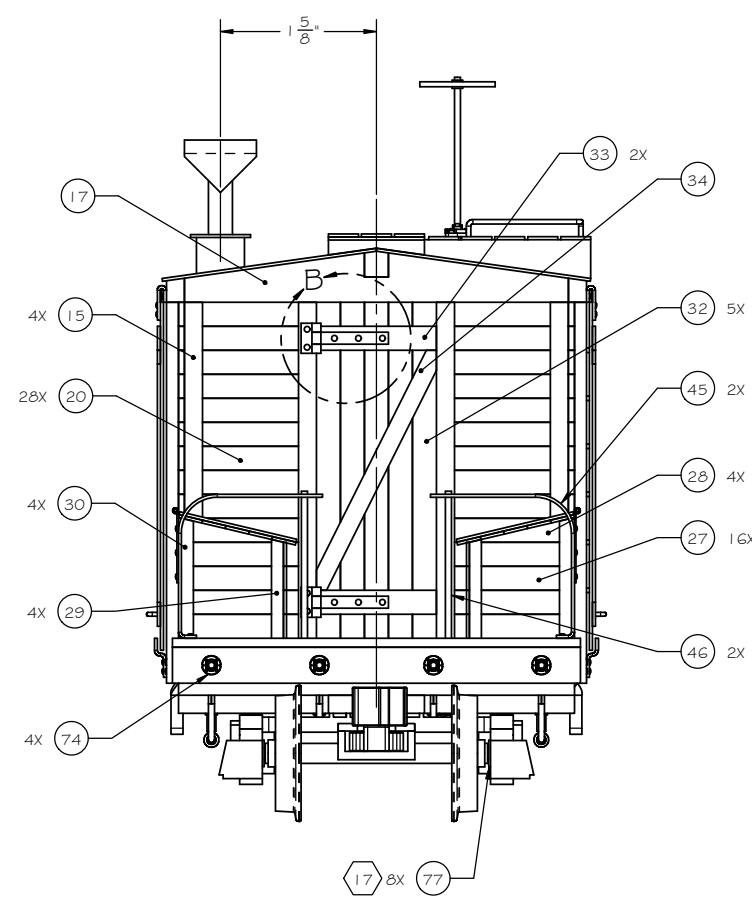
SECTION A-A



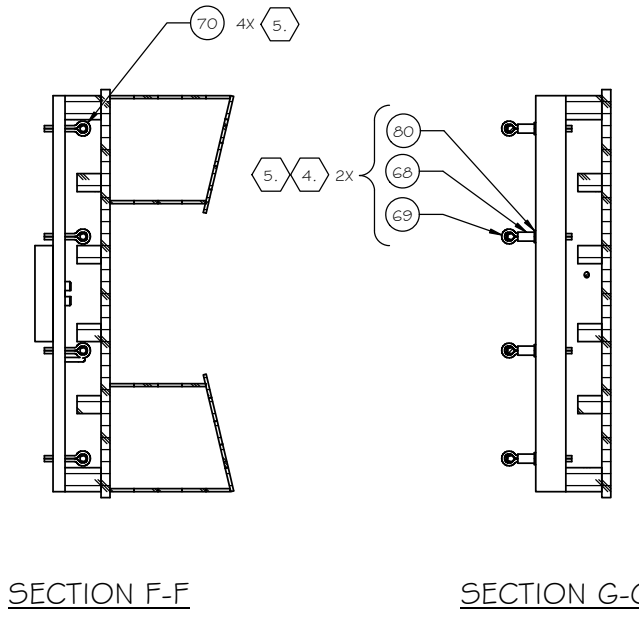
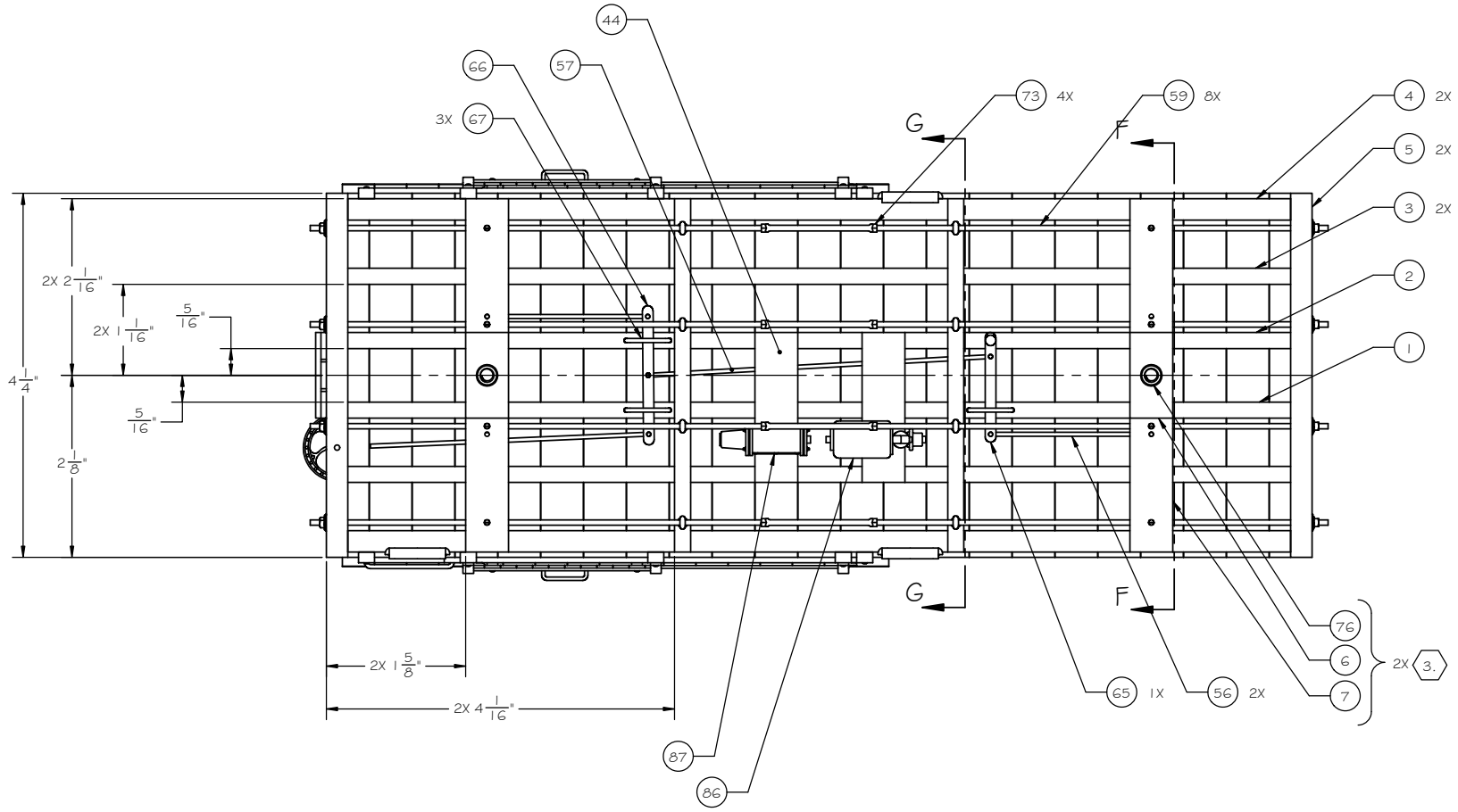
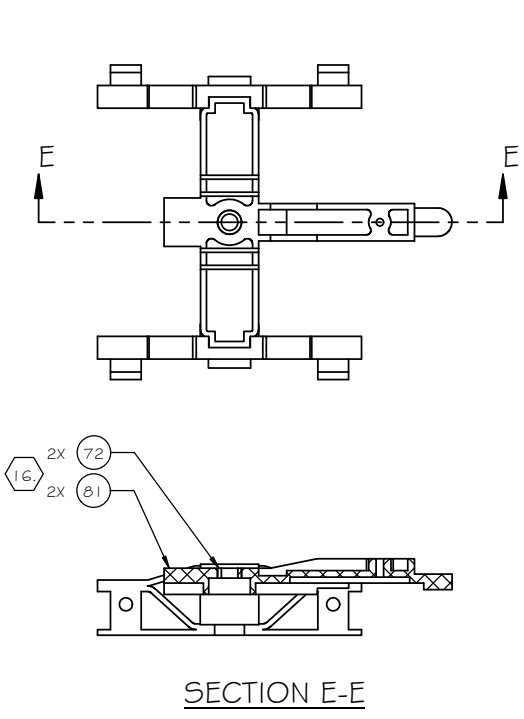
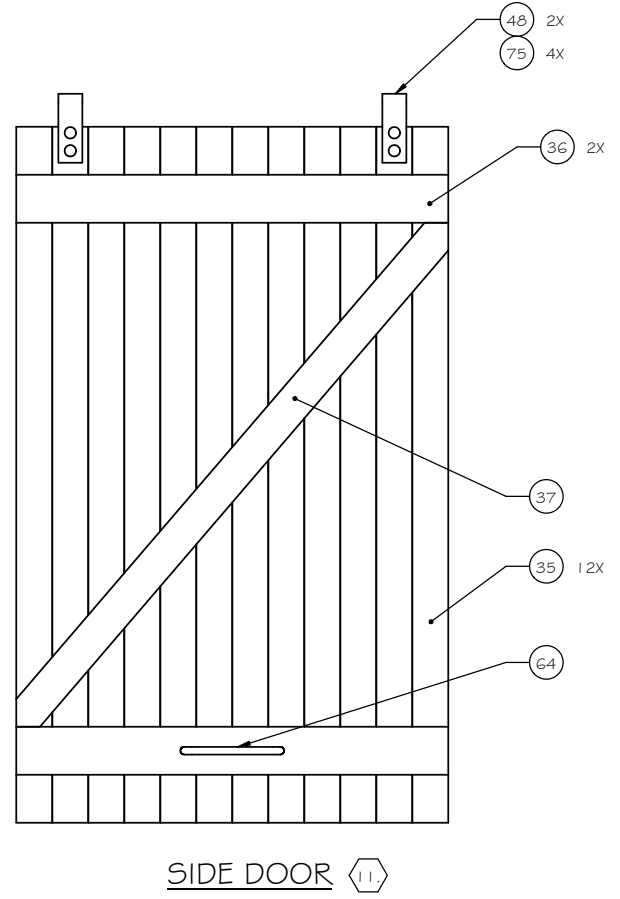
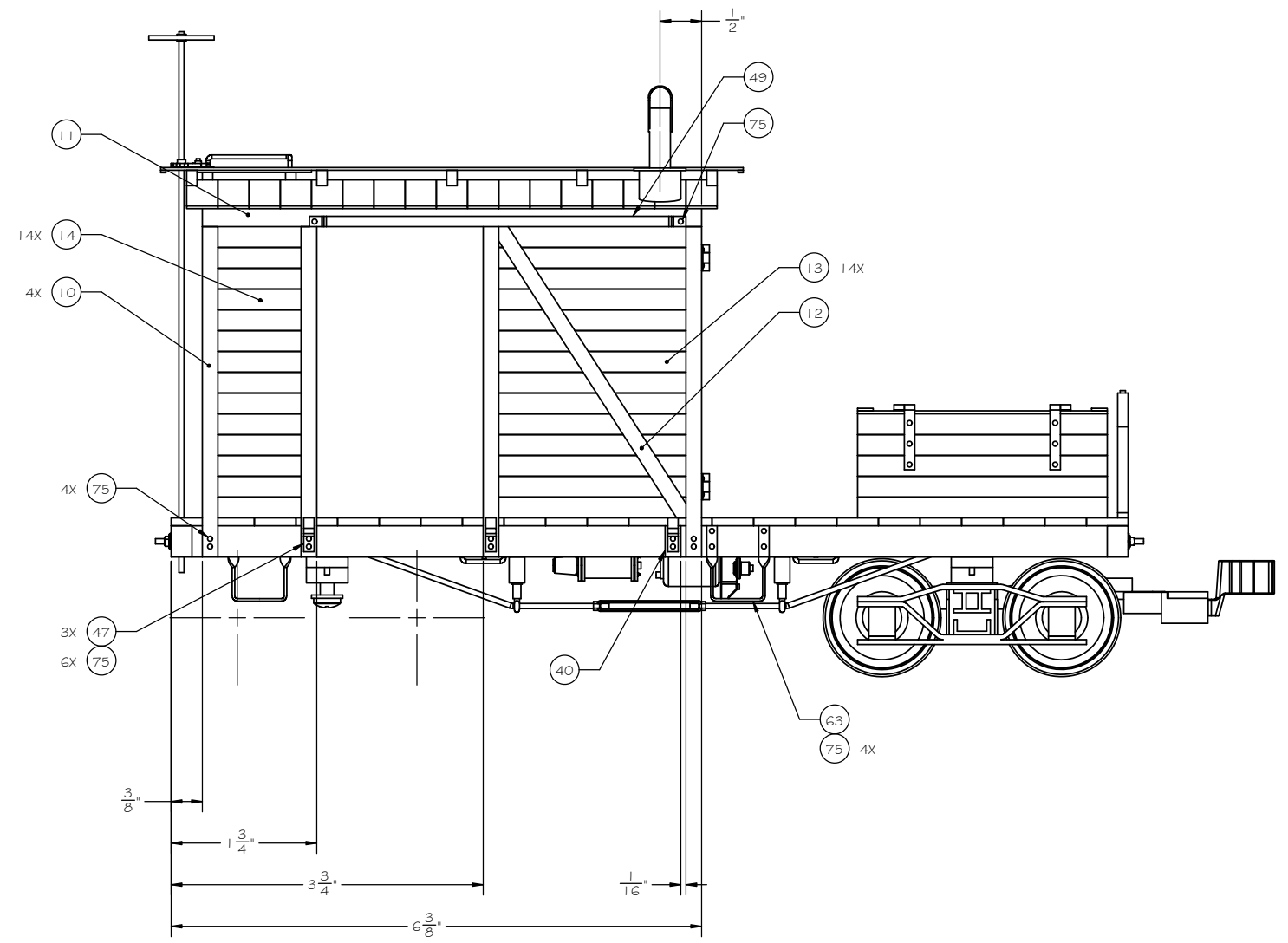
DETAIL C



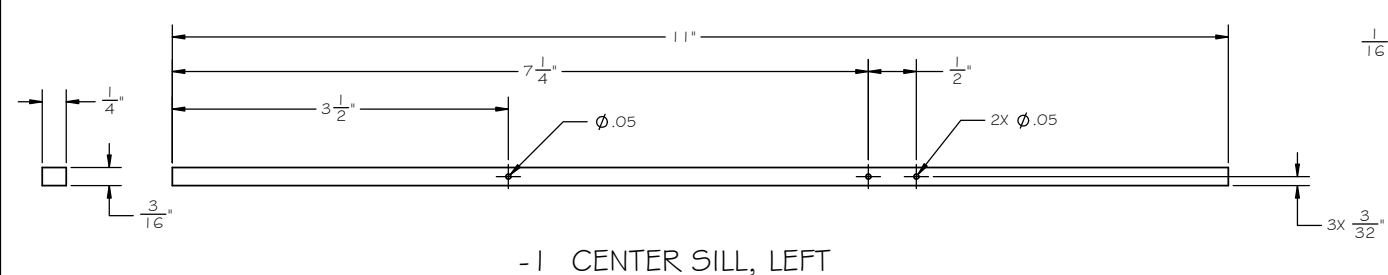
DETAIL B



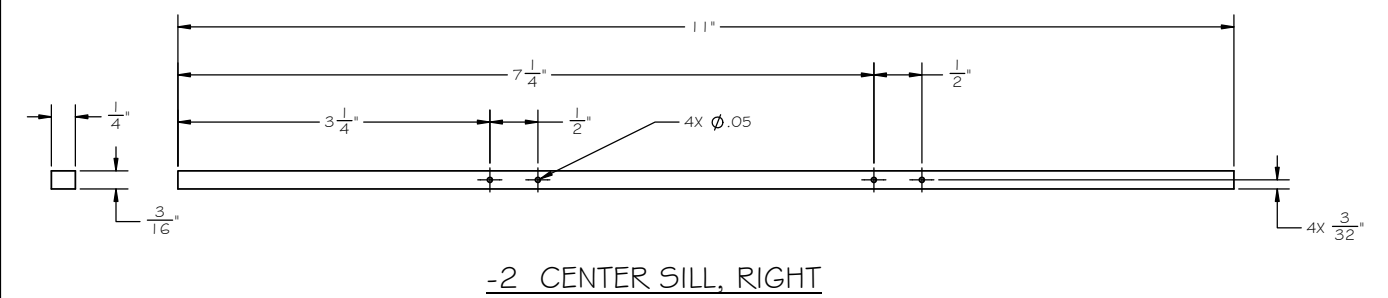
TITLE			
WORK CABOOSE			
SIZE	CAGE CODE	DWG. NO.	REV
D	-	GR Plan Set G2	-
SCALE	NONE	UNIT WT.	SHEET 3 OF 7



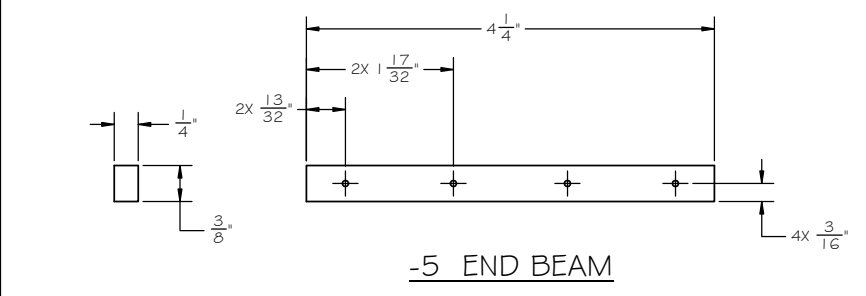
TITLE			
WORK CABOOSE			
SIZE	CAGE CODE	DWG NO.	REV
D	-	GR Plan Set G2	-
SCALE	NONE	UNIT WT.	SHEET 4 OF 7



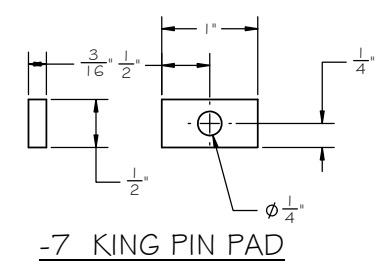
-1 CENTER SILL, LEFT



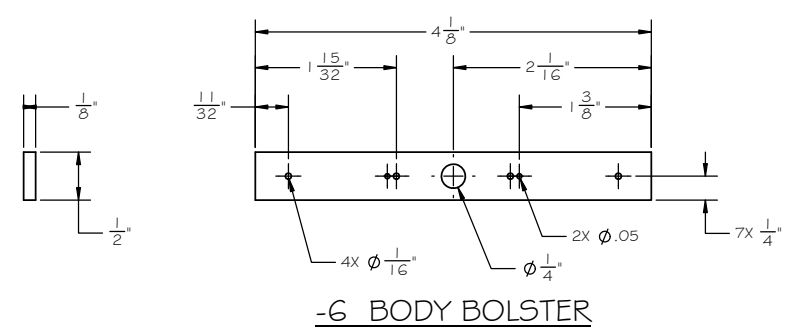
-2 CENTER SILL, RIGHT



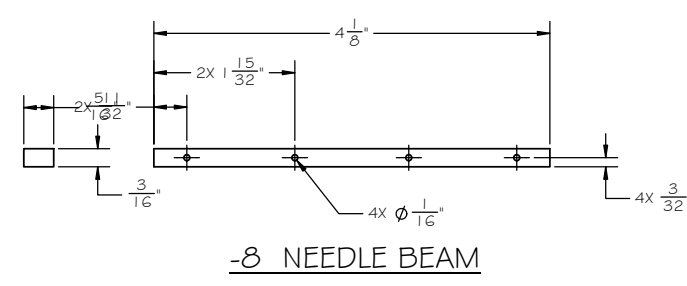
-5 END BEAM



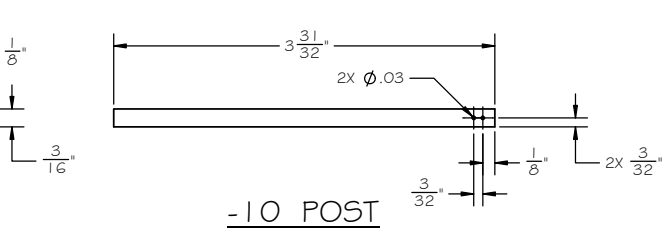
-7 KING PIN PAD



-6 BODY BOLSTER



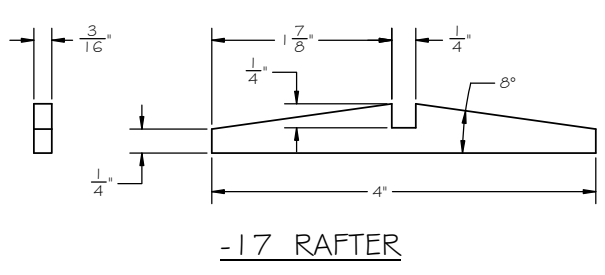
-8 NEEDLE BEAM



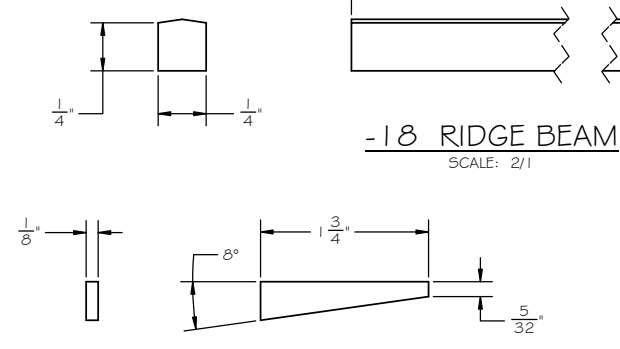
-10 POST



-11 SIDE WALL HEADER



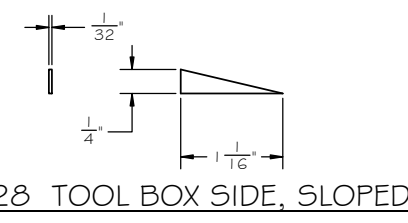
-17 RAFTER



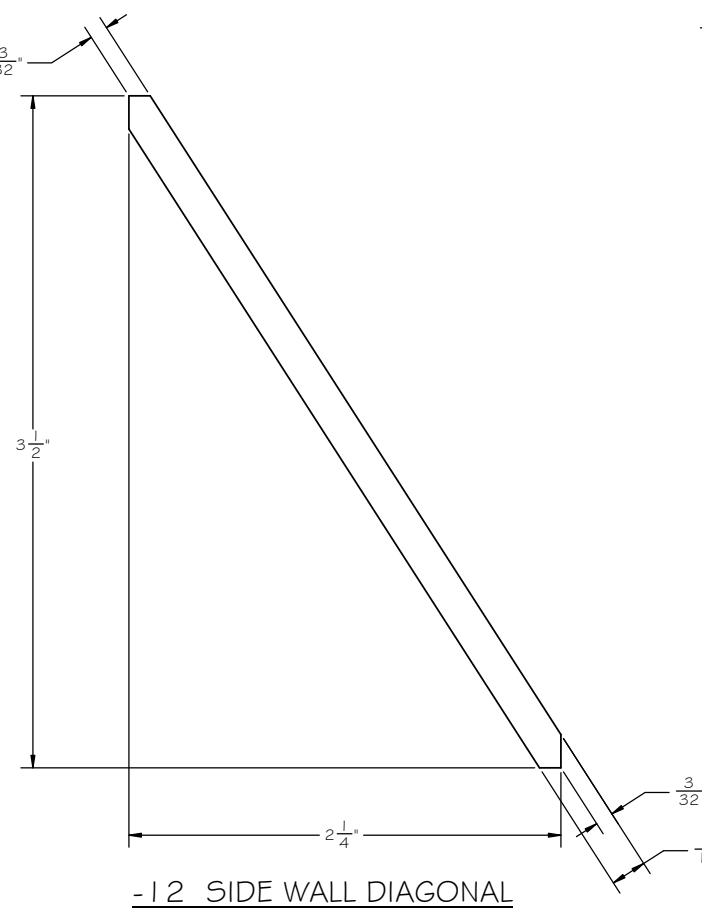
-18 RIDGE BEAM



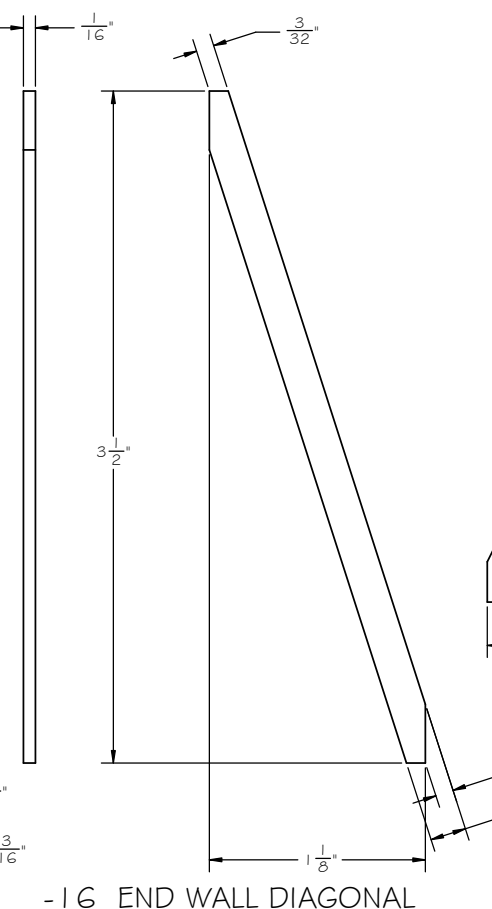
-24 BRAKE PLATFORM SUPPORT



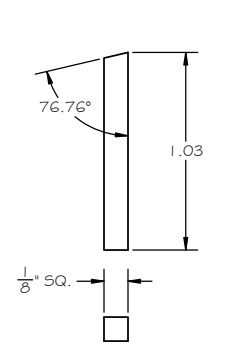
-28 TOOL BOX SIDE, SLOPED



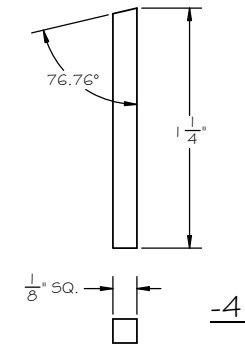
-12 SIDE WALL DIAGONAL



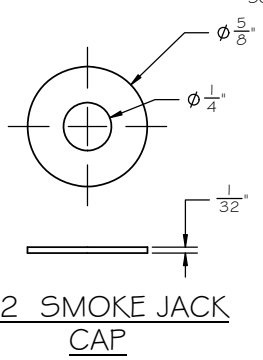
-16 END WALL DIAGONAL



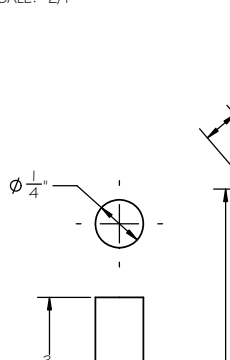
-29 TOOL BOX POST SHORT



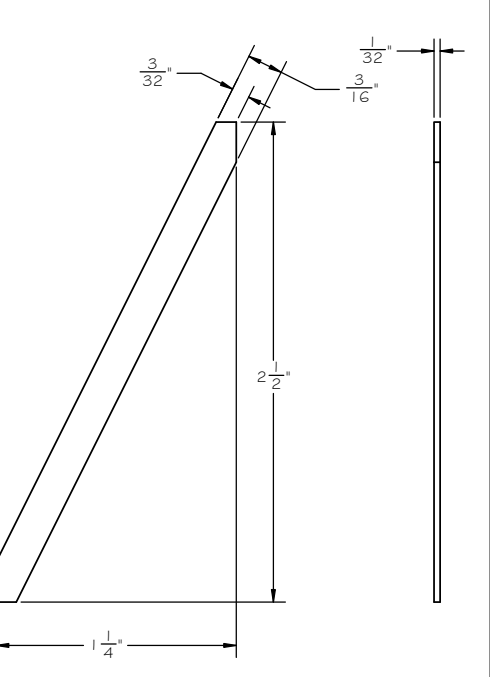
-30 TOOL BOX POST LONG



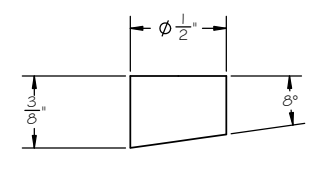
-42 SMOKE JACK CAP



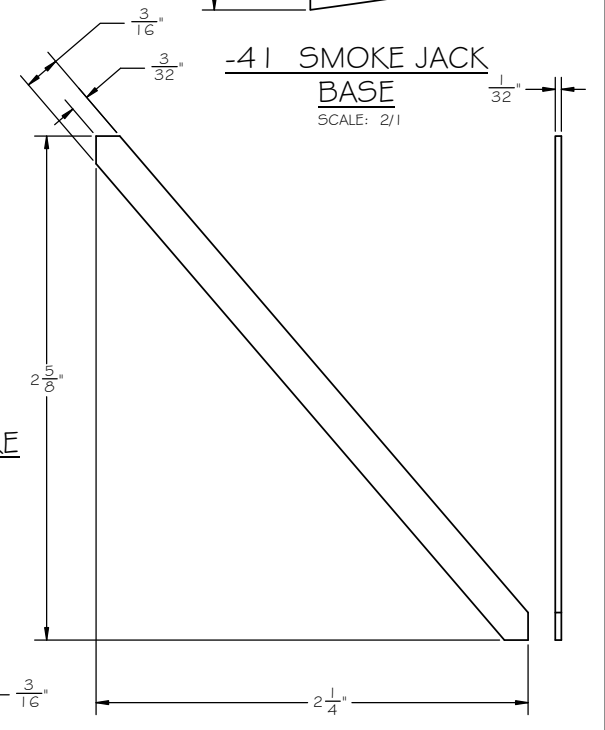
-43 SMOKE STACK



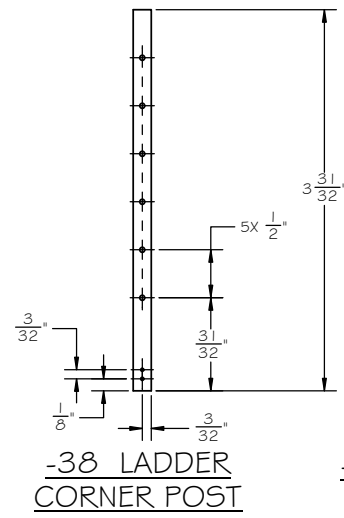
-34 DOOR DIAGONAL



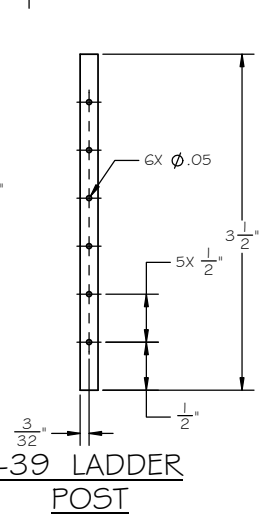
-41 SMOKE JACK BASE



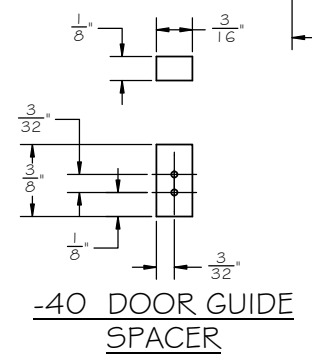
-37 SIDE DOOR DIAGONAL



-38 LADDER CORNER POST

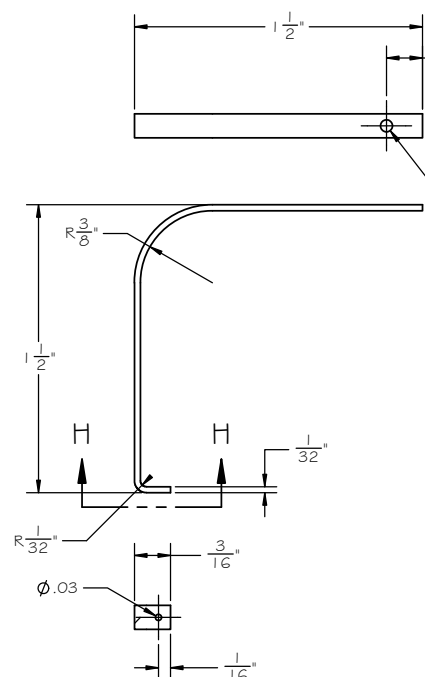


-39 LADDER POST

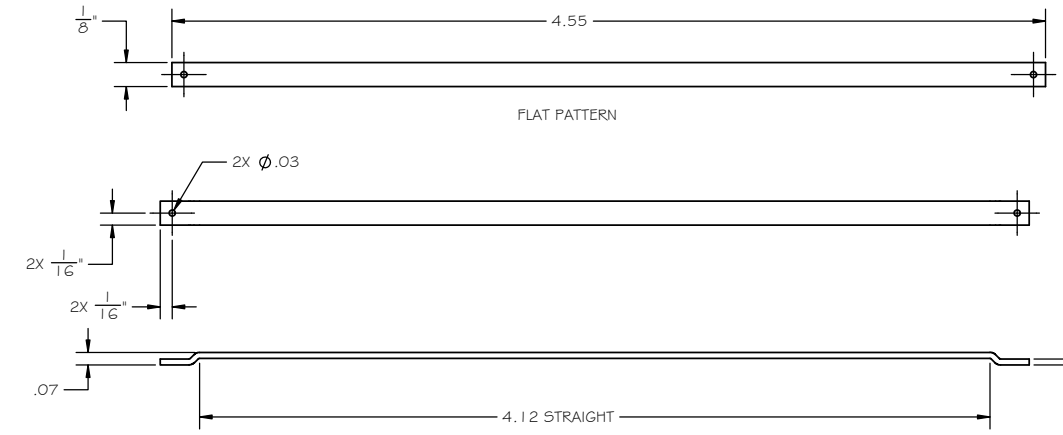


-40 DOOR GUIDE SPACER

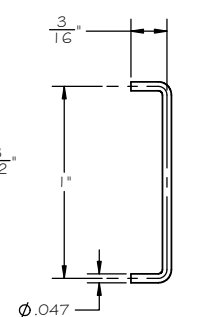
TITLE			
WORK CABOOSE			
SIZE	CAGE CODE	DWG. NO.	REV
D	-	GR Plan Set G2	-
SCALE	NONE	UNIT WT.	SHEET 5 OF 7



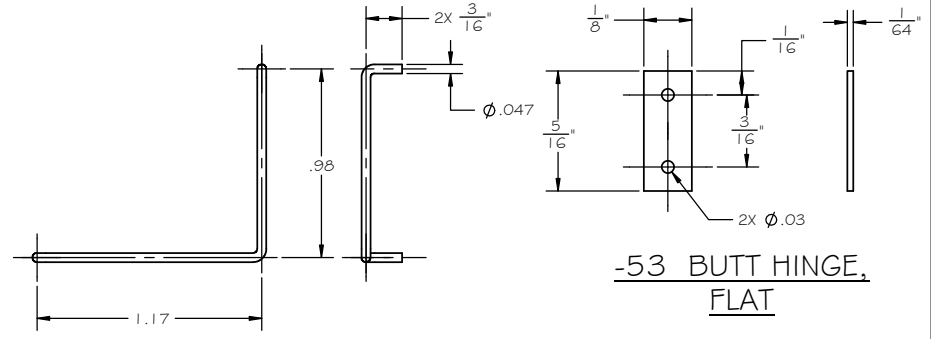
-47 SIDE DOOR GUIDE



-48 DOOR SLIDE



-50 LADDER RUNG

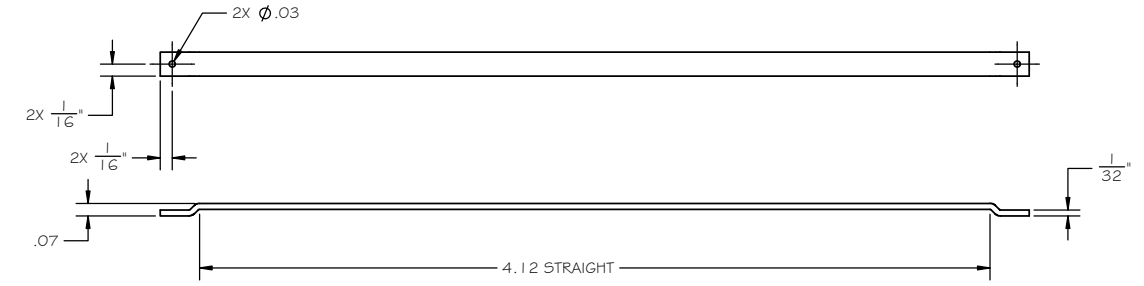


-51 ROOF GRAB IRON

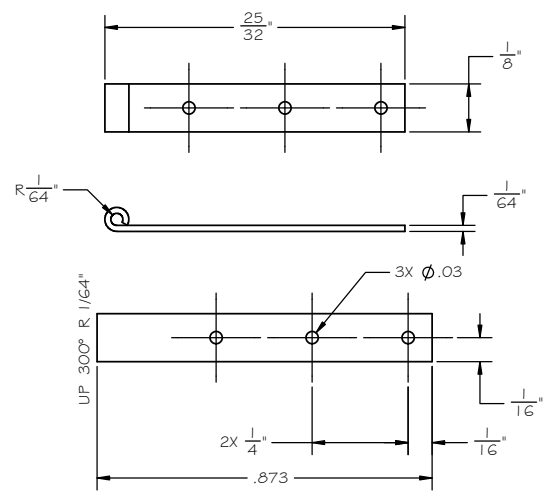
-53 BUTT HINGE, FLAT

SECTION H-H

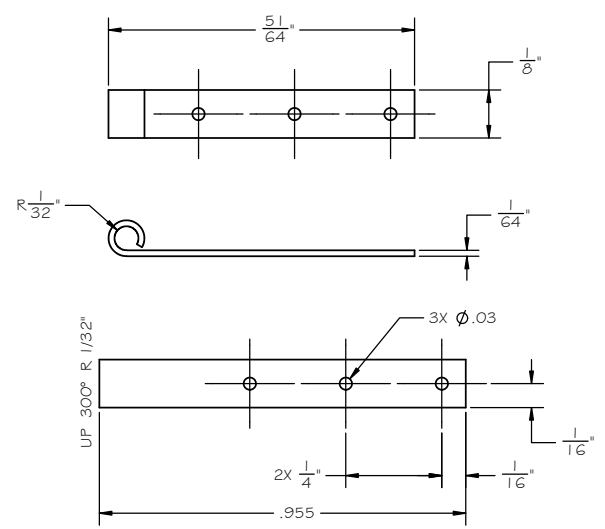
-45 END RAIL



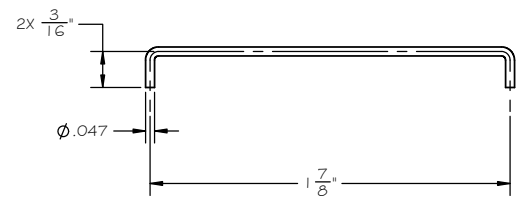
-49 DOOR TRACK



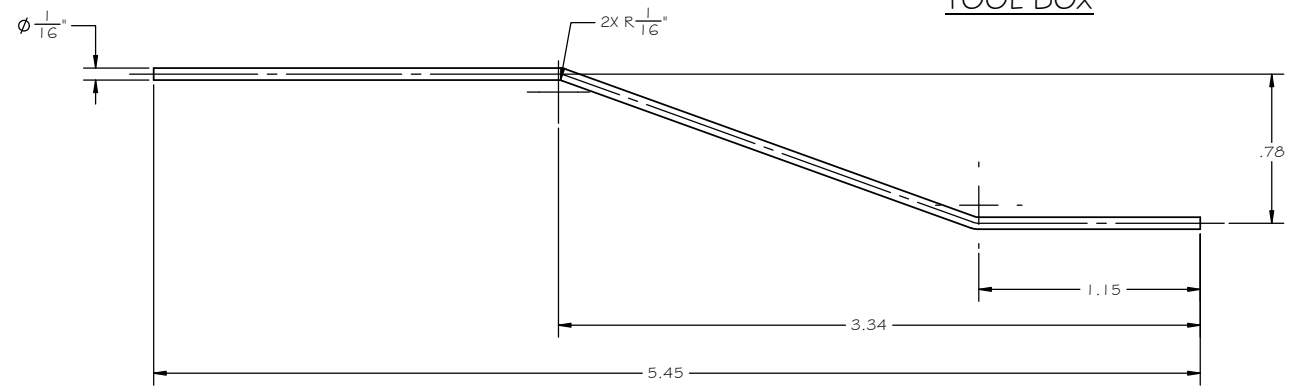
-52 STRAP HINGE TOOL BOX



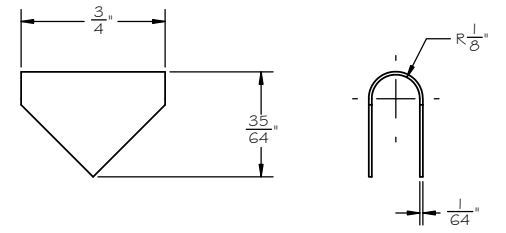
-55 STRAP HINGE DOOR



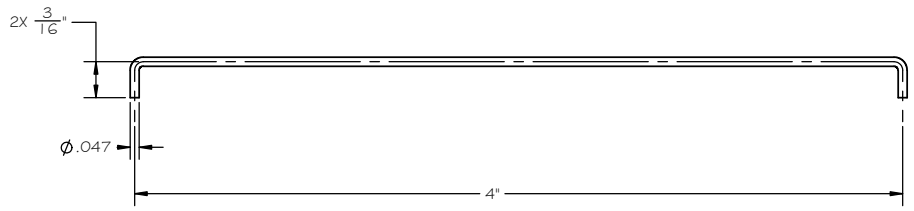
-56 BRAKE ROD, TRUCK



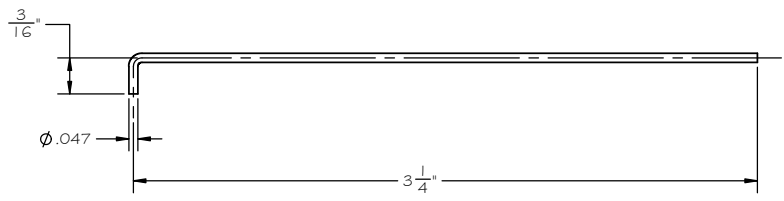
-59 TRUSS ROD



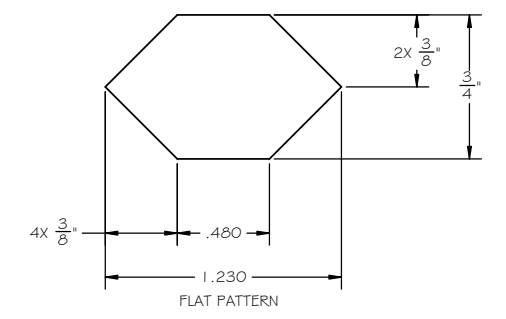
-60 SMOKE STACK CAP



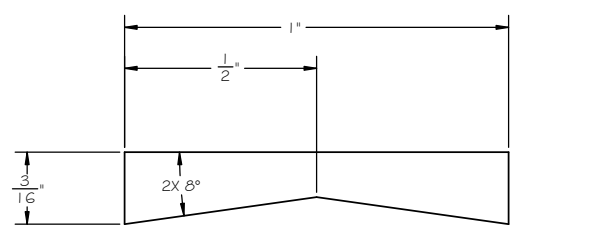
-57 BRAKE ROD, LINK



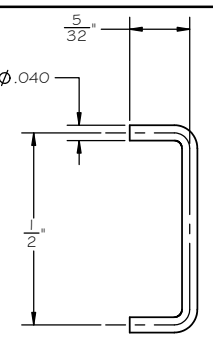
-58 BRAKE ROD, BRAKE WHEEL



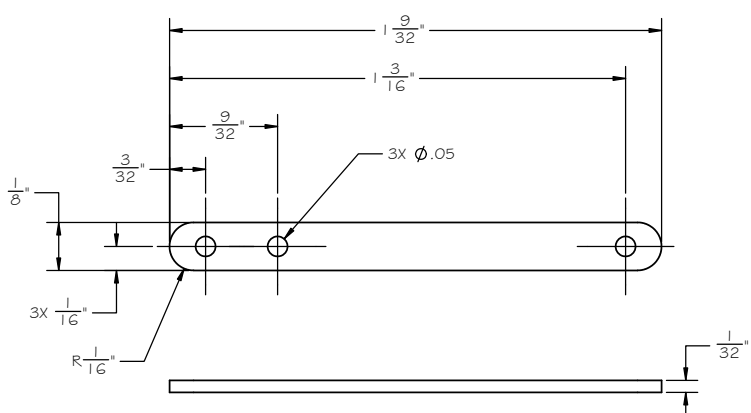
TITLE			
WORK CABOOSE			
SIZE	CAGE CODE	DWG NO.	REV
D	-	GR Plan Set G2	-
SCALE	NONE	UNIT WT.	SHEET 6 OF 7



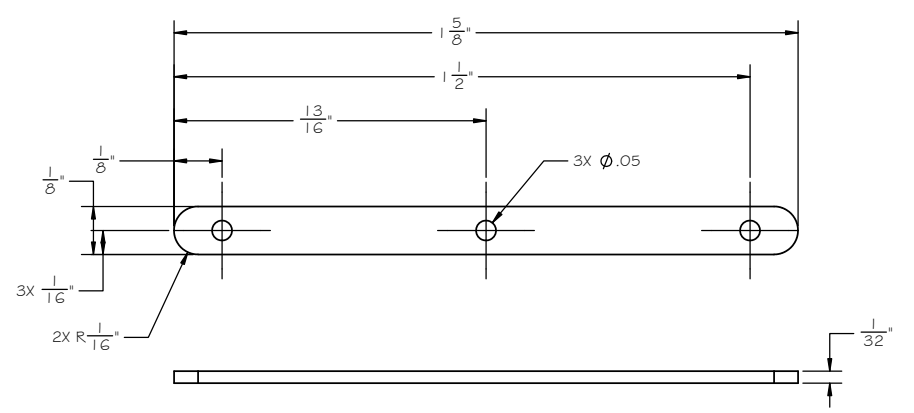
GR44-24 ROOF WALK SUPPORT



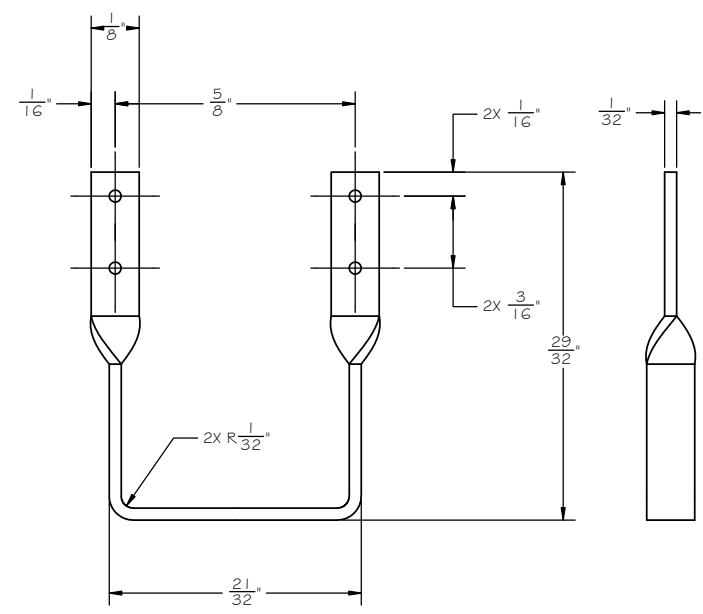
GR57-57 DOOR HANDLE



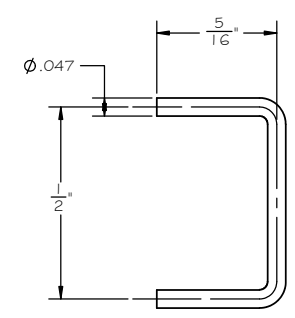
GR67-15 BRAKE RIGGING, SHORT LEVER



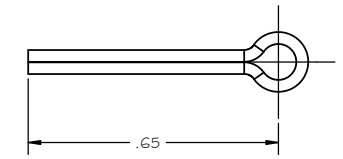
GR67-16 BRAKE RIGGING, LONG LEVER



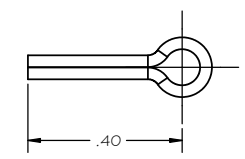
GR57-50 STIRRUP STEP



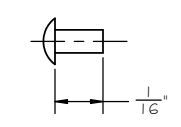
GR67-20 BRAKE RIGGING SUPPORT



GR67-25 COTTER PIN, NEEDLE BEAM



GR67-26 COTTER PIN, BOLSTER



GR67-39 CARRIAGE BOLT

TITLE			
WORK CABOOSE			
SIZE	CAGE CODE	DWG NO.	REV
D	-	GR Plan Set G2	-
SCALE	NONE	UNIT WT.	SHEET 7 OF 7